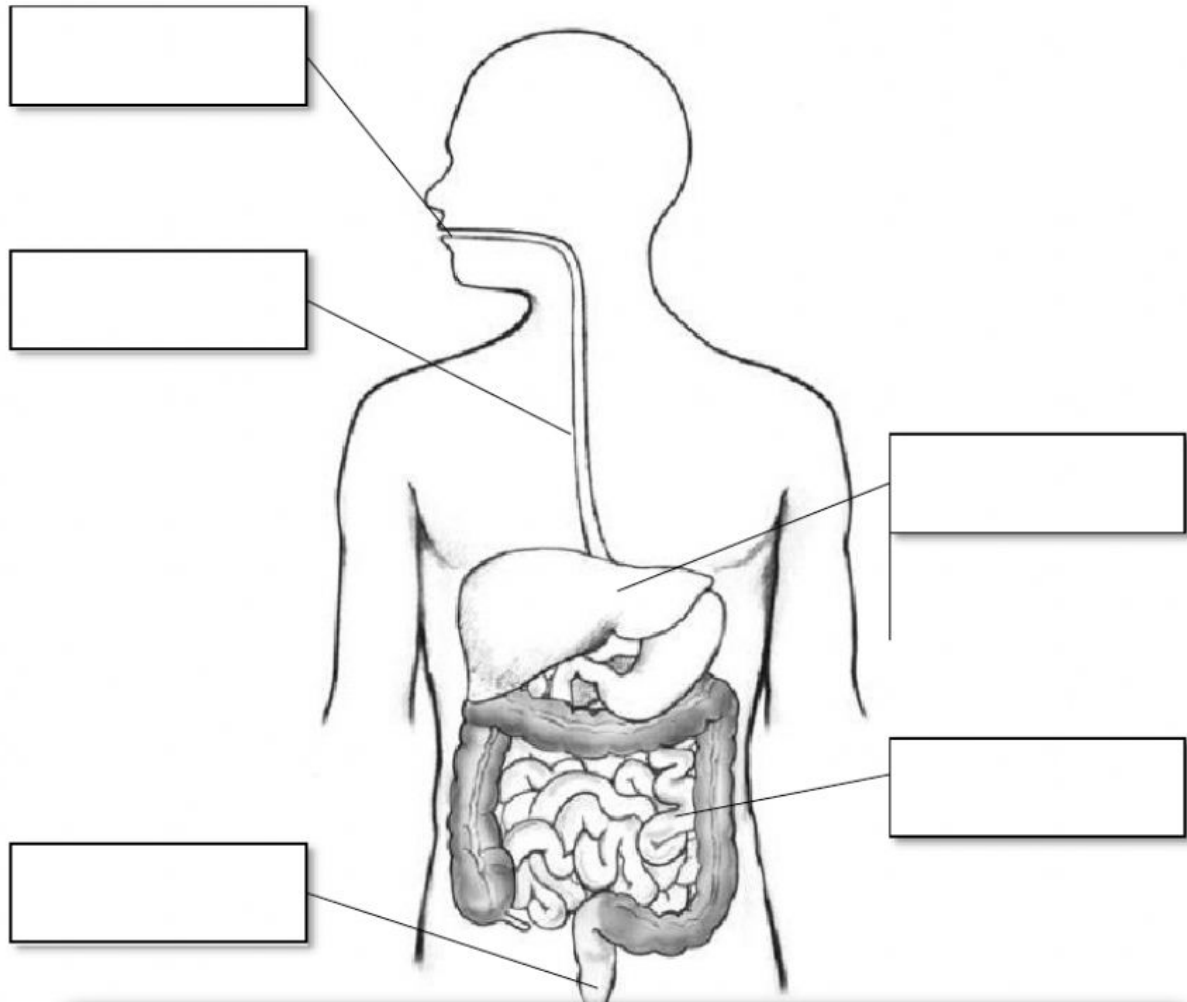


HUMAN DIGESTION ORGANS



What is the digestive process?

What is the importance of the digestive process?

THE FLOW OF FOOD

Match The following statements with the suitable organ.

Food then moves to the esophagus

Food chewed in the mouth is crushed by teeth and mixed with saliva in the mouth

Food moves into the stomach

nutrients and water are absorbed

Undigested food is removed

Stomach juice crushes food and converts it into a concentrated liquid

