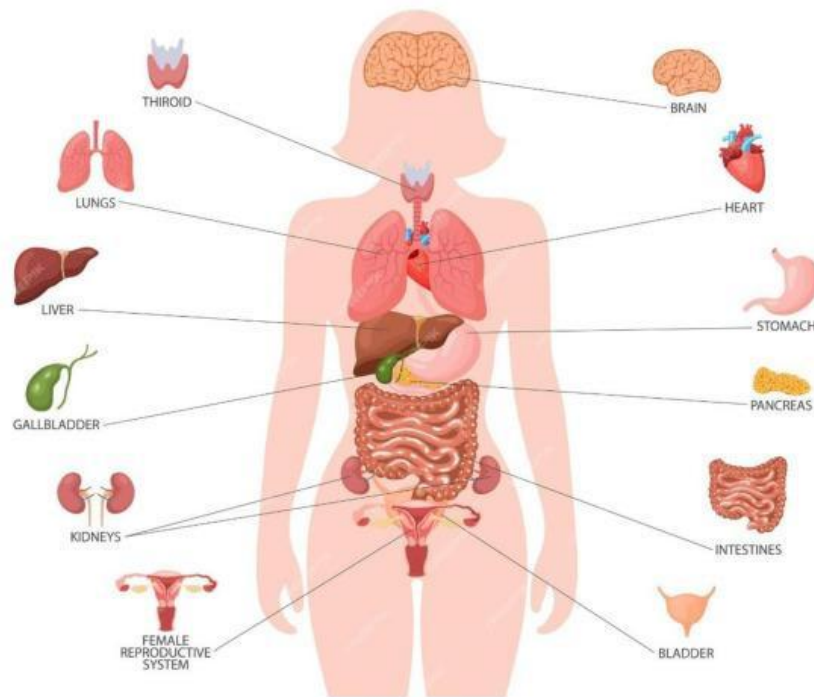


# **GDS TUTORING**

## **FALL TERM 2023**

### **HEALTH SCIENCE VIRTUAL ASSESSMENT**



## **SHOW WHAT YOU KNOW!!!**

### **Instructions to Students:**

- 1. Read each question carefully.**
- 2. Answer ALL questions**
- 3. Follow ALL instructions.**

**TIME ALOTTED: 35 Minutes**

**DO YOUR BEST 😊**

## **Section A- Multiple Choice – Choose the best possible answer.**

1. Which disease cannot be passed on from one person to another?

- A. Chicken pox
- B. Cold
- C. Conjunctivitis
- D. Hypertension

2. Organisms that cause diseases are called \_\_\_\_\_.

- A. Fungi
- B. Pathogens
- C. Virus
- D. Worms

3. Which disease is an acute disease?

- A. AIDS
- B. Cancer
- C. Conjunctivitis
- D. Diabetes

4. Which of the following is not a chronic disease?

- A. Cancer
- B. Diarrhea
- C. HIV
- D. Kidney disease

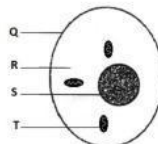
5. How often should you brush and floss teeth?

- A. 1-2 times per day
- B. Every other day
- C. Once a week
- D. Once a year

6. A doctor who cares for teeth is called a

- A. Dentist
- B. Nurse
- C. Pediatrician
- D. Surgeon

**Use the diagram to answer questions 7 to 11.**



7. Which organelle produces energy?

- A. Q
- B. R
- C. S
- D. T

8. Which organelle controls what enters and leaves the cell?

- A. Q
- B. R
- C. S
- D. T

9. Which part of the cell has DNA?

- A. Q
- B. R
- C. S
- D. T

10. Which structure is jelly-like?

- A. Q
- B. R
- C. S
- D. T

11. Which is the name of organelle T?

- A. Cell membrane
- B. Cell wall
- C. Mitochondrion
- D. Nucleus

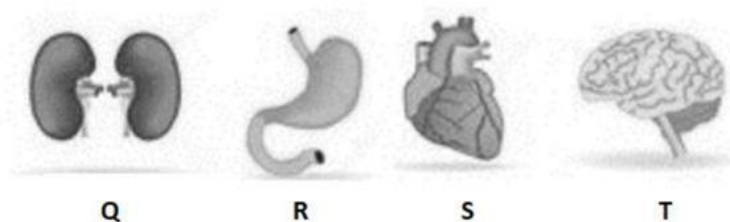
12. To stop body odor a person should

- A. Apply deodorant to clean armpits after your bath or shower
- B. Apply makeup after a shower
- C. Brush teeth
- D. Put on clean clothes

13. Which term best defines the word organ?

- A. A group of specialized cells carrying out similar functions.
- B. A group of different tissues working together to carry out a specific function/s.
- C. The basic unit of life.
- D. None of the above.

**Use the diagrams below to answer questions 14 and 15.**



14. Which organ below belongs to the digestive system?

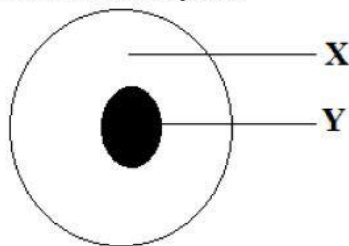
- A. Q
- B. R
- C. S
- D. T

15. Which organ below belongs to the digestive system?

- A. Q
- B. R
- C. S
- D. T

### **SECTION B- Structured Questions – Answer ALL Questions**

1. The diagram shows the structure of a human body cell.



a. Name the parts labelled X and Y on the diagram.

X \_\_\_\_\_

Y \_\_\_\_\_

[2]

b. Which structure labelled on the diagram contains chromosomes and genes?

\_\_\_\_\_ [1]

c. Human body cells are made up of protoplasm. What is protoplasm?

\_\_\_\_\_ [1]

d. Explain the function of these specialized cells in the body.

i. Muscle cells \_\_\_\_\_

ii. Neurone \_\_\_\_\_ [2]

e. Name the TWO cells which form a zygote after fertilization.

\_\_\_\_\_ [1]

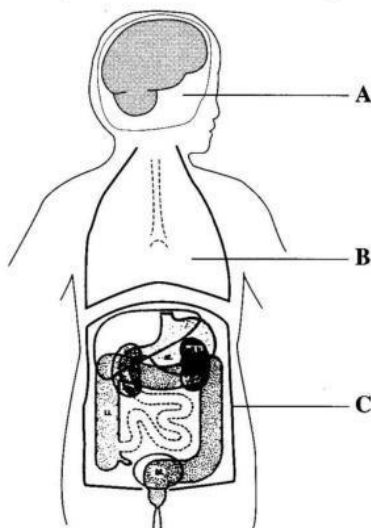
f. Complete the chart to show the correct order in which human body is organized.

Cells → \_\_\_\_\_ → Organs \_\_\_\_\_ → Organisms

[2]

**TOTAL MARKS 10]**

2. The diagram shows the human body cavities and the main organs present in them.



a. Name the body cavities represented by the letters A and B on the diagram.

i. Cavity A \_\_\_\_\_

ii. Cavity B \_\_\_\_\_ [2]

b. Name one organ protected by each of the following bones.

Cranium \_\_\_\_\_

Ribs \_\_\_\_\_ [2]

c. (i) Name the muscle which separates cavity B from cavity C.

\_\_\_\_\_ [1]

(ii) How does the upward movement of the muscle named in (i) affects the lungs?

\_\_\_\_\_ [1]

(iii) Place an X on the diagram to show the location of the lungs in the body. [1]

d. Which cavity contains the organs where:

i. Breathing occurs \_\_\_\_\_

ii. Kidneys are located: \_\_\_\_\_

iii. Messages are interpreted? \_\_\_\_\_ [3]

**TOTAL MARKS 10]**