

NAME

DATE

- 1 Complete the text using the words below.

stimuli – organs – sensitivity – respond

..... is our ability to detect and to changes in our environment. These changes are called external They include sounds, light and everything else that we detect with our sense

- 2 Match the part of the body to the sentence.

sense organs

They receive the orders and our muscles respond by moving our body.

nervous system

They contain receptors that detect external stimuli. They send the information to the nervous system.

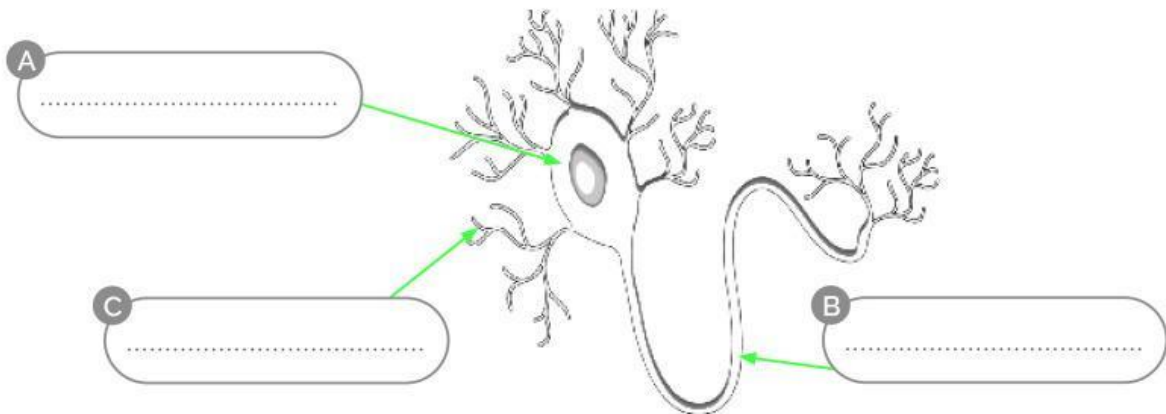
skeletal and muscular systems

It interprets the information and sends orders that create a response.

- 3 Read the text below and circle the correct words.

The nervous system consists of nervous tissue/organs, which is made up of nerve organelles/cells, or neurons. The nervous system has two parts: the central/middle nervous system, which consists of the brain and the spinal cord/nerve, and the cerebral/peripheral nervous system, which is made up of receptors/nerves.

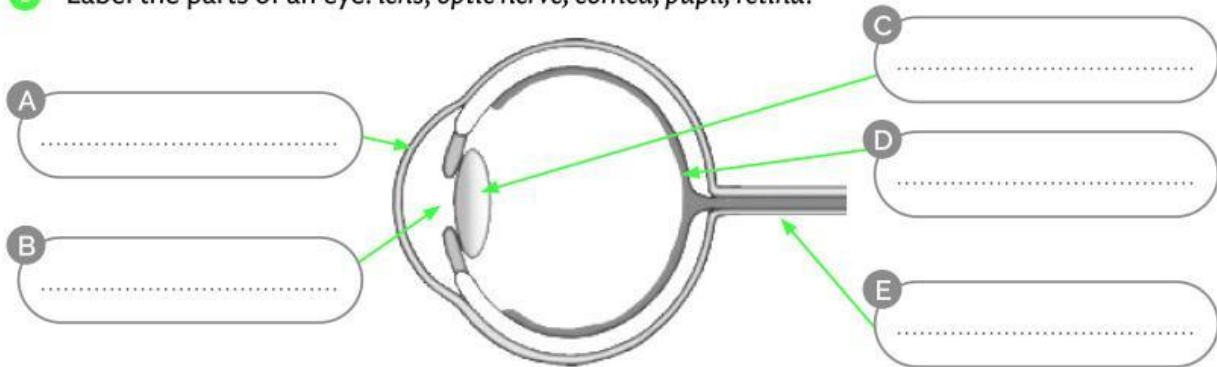
- 4 Label the parts of a neuron: *dendrites, axon, nucleus*.



- 5 Tick the false sentence. Write the correct sentence below.

- ☐ Eyes are the sense organs of sight.
☐ The eye receives light and sends this information to the brain.
☐ Ears are the sense organ of smell.
-

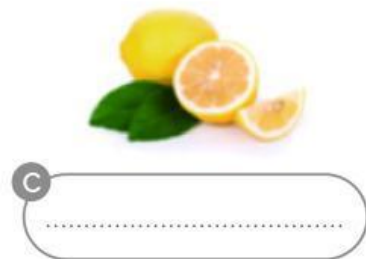
- 6 Label the parts of an eye: *lens, optic nerve, cornea, pupil, retina*.



- 7 Complete the sentence with the correct organ: *eye, ear, skin, nose, tongue*.

Our contains millions of tiny touch receptors that allow us to feel different sensations.

- 8 Label the flavours shown in the photos: *bitter, sour, sweet*.



- 9 How can we protect our eyes? Circle the correct word.

Increase/Reduce the time you spend looking at a digital screen.

- 10 Tick the ways we can protect our ears.

- ☐ Reduce the volume when using headphones. ☐ Keep your distance from loud noises.
☐ Don't put anything inside your ear canal. ☐ Wear sunglasses in bright light.