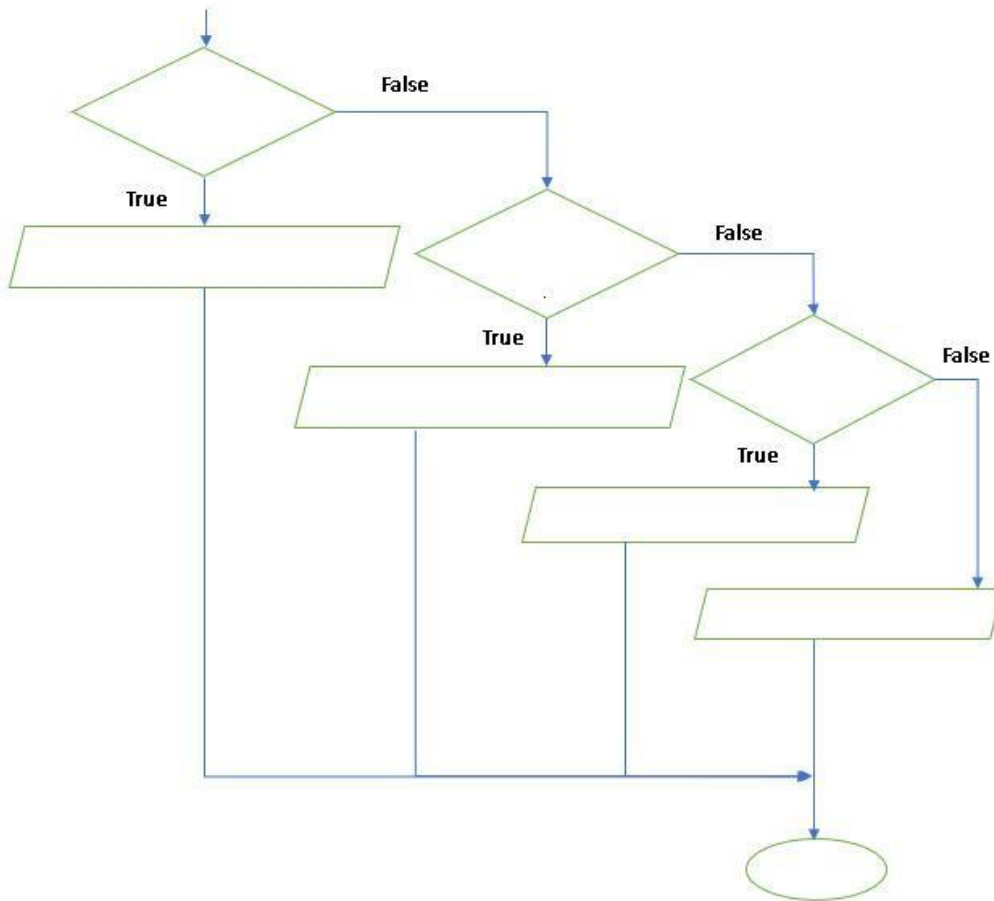


drag and drop the following steps to put them in the right order.



BMI  $\geq$  25  
and BMI  $<$   
30 ?

BMI  $\geq$   
18,5 and  
BMI  $<$  25  
?

BMI  $<$  18,5  
?

Output ( "overweight" )

Output ( "underweight" )

Output ( "healthy weight" )

Output ( "Obese" )

Stop