



SCIENCE TEST

7th Grade – I Partial



Student's Name: _____

Teacher's Name: Mr. Guierrez Score: _____

School Year: 2020 – 2021 Points: **35%**

Topics: Scientific Reasoning, Flowering Plants
Monocot Families, Leaves, Photosynthesis and
Respiration

Date: _____

Teacher Comment:

PART I. TRUE OR FALSE

10 pts. (1 pts. each)

INSTRUCTIONS: Write in the parenthesis a **T** if the statement is true and an **F** if it is false. If the answer is false, justify your answer by filling in the blank.

1. **Inference** is a conclusion based on reasoning from evidence
2. **Logicians** are people who likes to talk about science
3. **Green Plants** are among the most important of God's provisions for life on Earth
4. **Petals** often serve to attract insects or birds that pollinate the plant
5. **Pollination** is the transfer of polen from the anther to the stigma
6. **Fertilization** is when the plant is death and becomes fertilizer
7. **Pollination and Fertilization** are crucial in the reproductive cycle of a plant
8. Bees, moths, ants, bats, and some birds are called **pollinators**
9. **Dicots** are plants that have one cotyledon
10. **Monocots** are plants that have two or more cotyledons

PART II. MATCHING 7 pts. (1 pt. each)

PART II. MATCHING 7 pts. (1 pt. each)

Instructions: Match the **Angiosperm Family** on column A to its each plants examples on column B.

COLUMN B

- | | |
|-----------------------|--|
| 1. Composite Family | - apple, cherry, peach, roses, apricot, blackberry, raspberry, and almond. |
| 2. Pea Family | - columbine, peony, buttercup, and larkspur. |
| 3. Rose Family | - asters, sunflowers, daisies, and black-eyed Susan's. |
| 4. Buttercup Family | - catnip, basil, sage, marjoram, and thyme. |
| 5. Mint Family | - snowball bush and honeysuckle. |
| 6. Honeysuckle Family | - vetch, sweet peas, wisterias, locust trees, and mimosa trees. |
| 7. Parsley Family | - African lily, dill, parsnip, close-up umbel, and Queen Anne's lace. |

10 pts. (1pt. each)

Instructions: circle the word or date that best matches each statement.

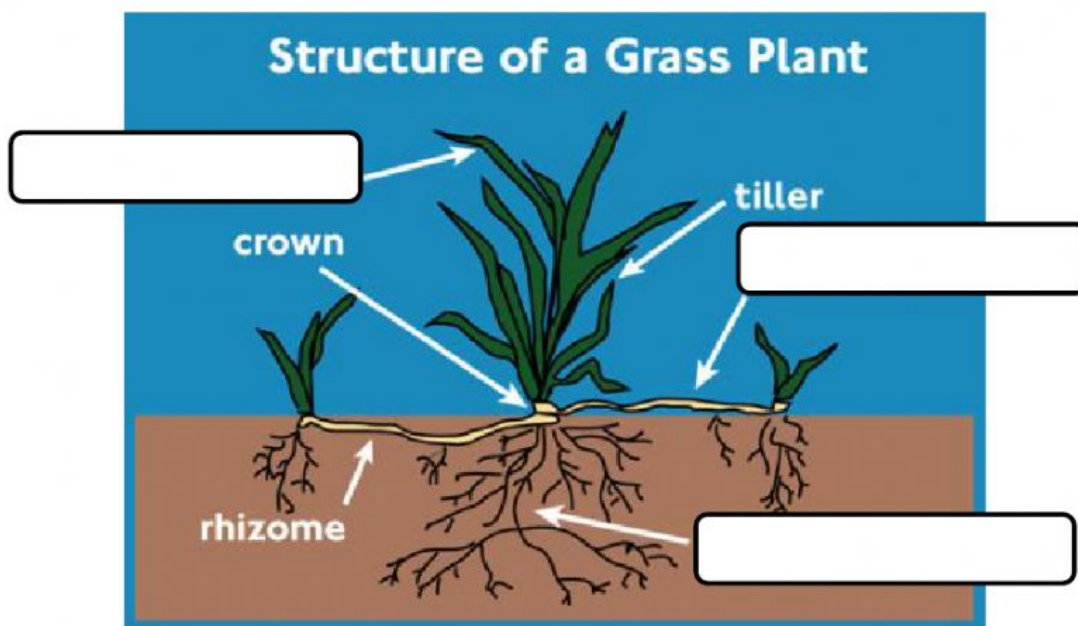
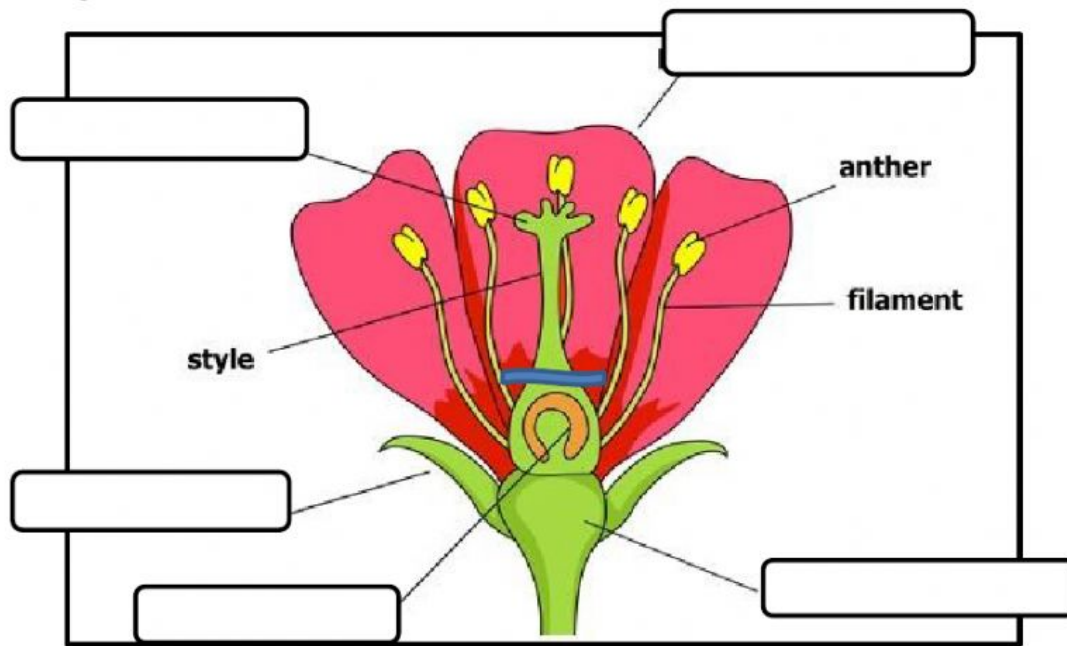
1. The study of reasoning. **(1 pt.)**
 - a) Scientist
 - b) Logic
 - c) inference
2. Uses more general evidence to make a specific inference. **(1 pt.)**
 - a) Deductive Reasoning
 - b) Scientific Reasoning
 - c) Inductive Reasoning
3. Uses specific evidence to make a general inference. **(1pt.)**
 - a) Deductive Reasoning
 - b) Scientific Reasoning
 - c) Inductive Reasoning
- 4) Scientists specialized in plants. **(1pt.)**
 - a) Botany
 - b) Botanist
 - c) Bio Scientists
- 5) Basic design and primary function of all flowers **(1pt.)**
 - a) Reproduction of the plant
 - b) Provide Food
 - c) Help to the air
- 6) Leaf-like structures that surround the base of the petals. **(1pt.)**
 - a) Petals
 - b) Stamens
 - c) Sepals
- 7) Means being pollinated by its own pollen. **(1pt.)**
 - a) Self-pollination
 - b) Own-pollination
 - C) Individual pollen
- 8) Transfer of pollen from one flower to another. **(1pt.)**
 - a) Mix-pollination
 - b) Cross-pollination
 - C) Pollen tube
- 9) Male reproductive cell in the flowers reproduction. **(1pt.)**
 - a) Egg cell
 - b) Sperm cell
 - C) A and B are correct
10. Female reproductive cell in the flowers reproduction. **(1pt.)**
 - a) Egg cell
 - b) Sperm cell
 - C) A and B are correct

C) A and B are correct

PART V. PRACTICE

8 pts. (1 pt. each)

INSTRUCTIONS: Complete the Diagram writing parts of the Flower and the parts of a Grass Plant that are missing.



Don't limit your challenges, challenge your limits.

Mr. Gutierrez