

# ASKING DIRECTIONS

## 1 WARM UP

Guess the places. Where do you go when...

- a. You are hungry. \_\_\_\_\_
- b. You need dog food for your pet. \_\_\_\_\_
- c. You have tooth pain. \_\_\_\_\_
- d. You want to exercise. \_\_\_\_\_

## 2 MAP PLACES

Label the pictures below with words from the box.

church  
bus stop

supermarket  
traffic light

theatre  
road



a. \_\_\_\_\_



b. \_\_\_\_\_



c. \_\_\_\_\_



d. \_\_\_\_\_



e. \_\_\_\_\_

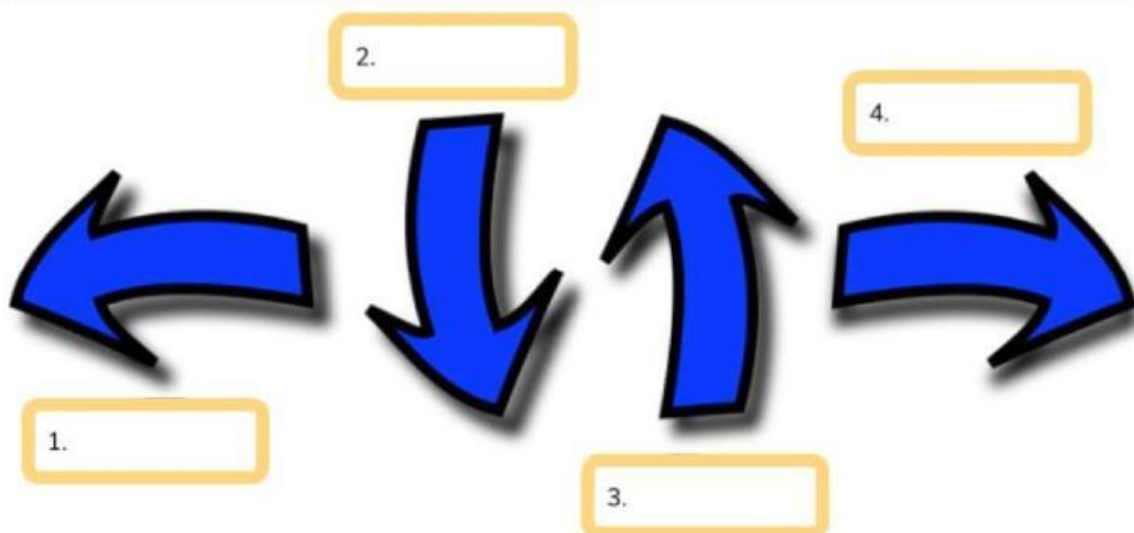


f. \_\_\_\_\_

### 3 GIVING DIRECTION

Match the phrases in the box to the correct picture.

go straight      turn right      turn left      turn around



## 4 QUESTIONS AND COMMON PHRASES

Complete the sentences below to form common phrases and questions.

repeat                      following                      catch                      on your  
At the                      check                      go past

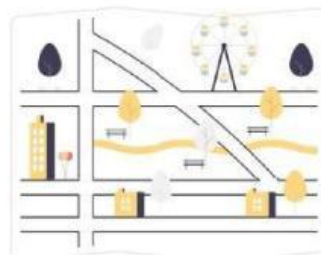
1. Go straight and walk until you see the church. \_\_\_\_\_ church, turn left and walk two blocks.
2. Turn left and go straight. Keep walking and \_\_\_\_\_ the gym and you will see the supermarket.
3. Turn right and go straight. You will find the bus stop \_\_\_\_\_ left.
4. I'm not \_\_\_\_\_. Could you please speak a bit slower?
5. I didn't \_\_\_\_\_ that.
6. Let me \_\_\_\_\_. I have to turn right at the traffic light?
7. I didn't hear you. Could you please \_\_\_\_\_ that?

## 5 DIALOGUE

Read the dialogues below and then complete the true and false exercise.

### Dialogue 1

- Keith: Excuse me, do you know where the closest supermarket is?
- Amber: Yes, turn right and go straight until you see the traffic lights. Then, turn left and walk past the gym. You will see the supermarket on your right.
- Keith: Thank you! Is it far?
- Amber: No! It's a 5 minute walk.



**Say whether the following statements are true or false. Correct them if they are false.**

True or False

- Keith is looking for the shopping mall.
- Keith needs to walk past the traffic light.
- Keith needs to turn left at the traffic light.
- Keith needs to turn right at the gym.
- It is a 5 minute walk.

### **Dialogue 2**

Sasha: Excuse me, I'm lost. Do you know where The Red Theatre is?

Anna: Yes, I do. Go straight until you find the church on your right. Then, turn left and walk two blocks. You will see the theatre on your left.

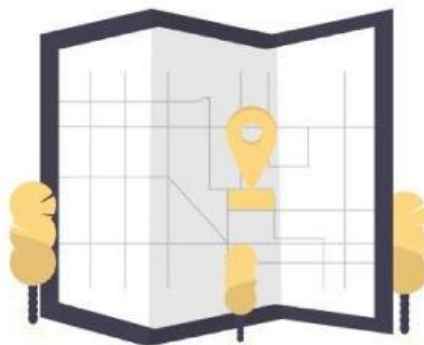
Sasha: Thank you!

Anna: No problem!

**Say whether the following statements are true or false. Correct them if they are false.**

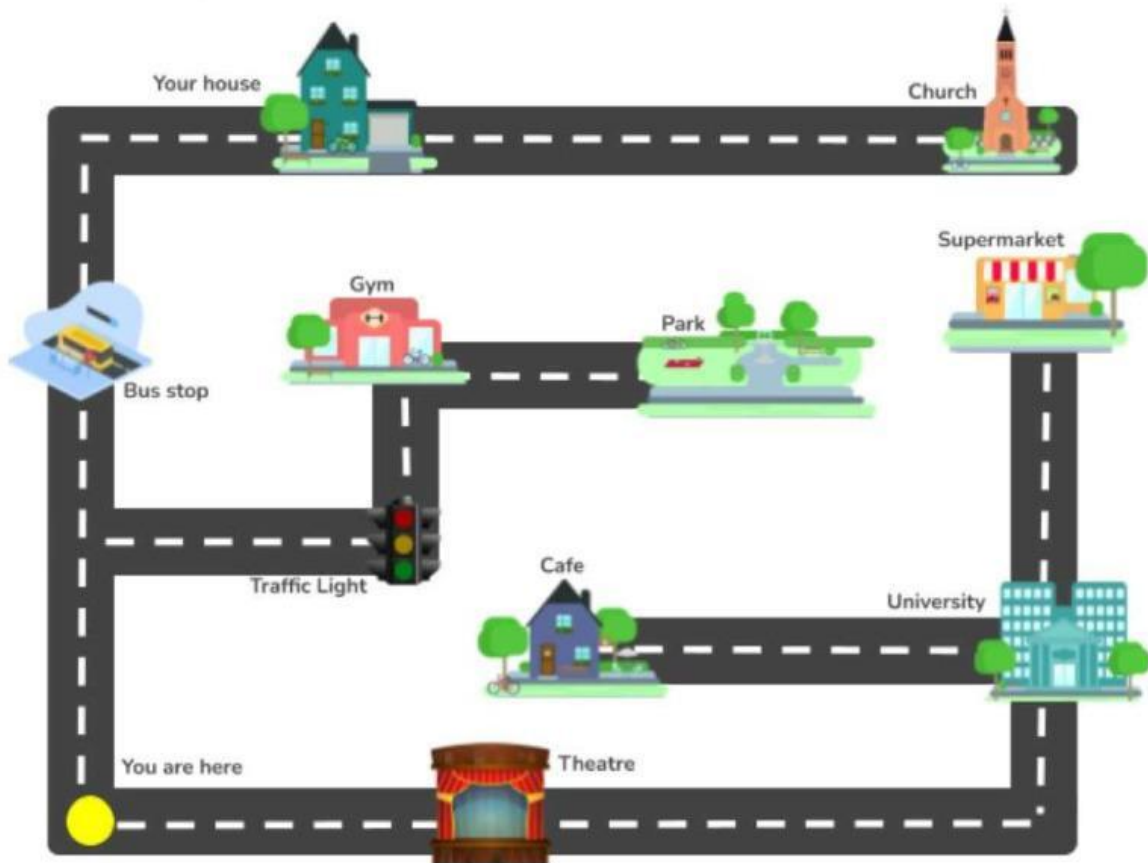
True or False

- Sasha is not lost.
- Sasha is looking for the theatre.
- Anna doesn't know where the theatre is.
- Sasha needs to turn left at the church.
- The theatre will be on her right.



## 6 GIVE DIRECTIONS

Look at the map. Then complete the exercises.



Give directions to the following places:

- The gym.
- Your house.
- The café.
- The park.
- The university.
- The supermarket.



**Read the directions. Which location does it take you to?**

1. Go straight. Turn right before the bus stop. Turn left at the traffic light. The location is on the next corner.
2. Turn right. Go straight and walk past the theatre. Turn left at the next corner and then turn left again at the university. Go straight to find the location.
3. Turn right. Go straight past the theatre and turn left at the corner. Go straight past the university. Keep walking until you find the location.
4. Go straight and walk past the bus stop. Turn right at the corner and walk past your house. Go straight to find the location.

## **7** DISCUSSION QUESTIONS

**Discuss the following questions together as a class.**

1. Do you use paper maps or google maps?
2. Are you good with directions?
3. Have you ever been lost?

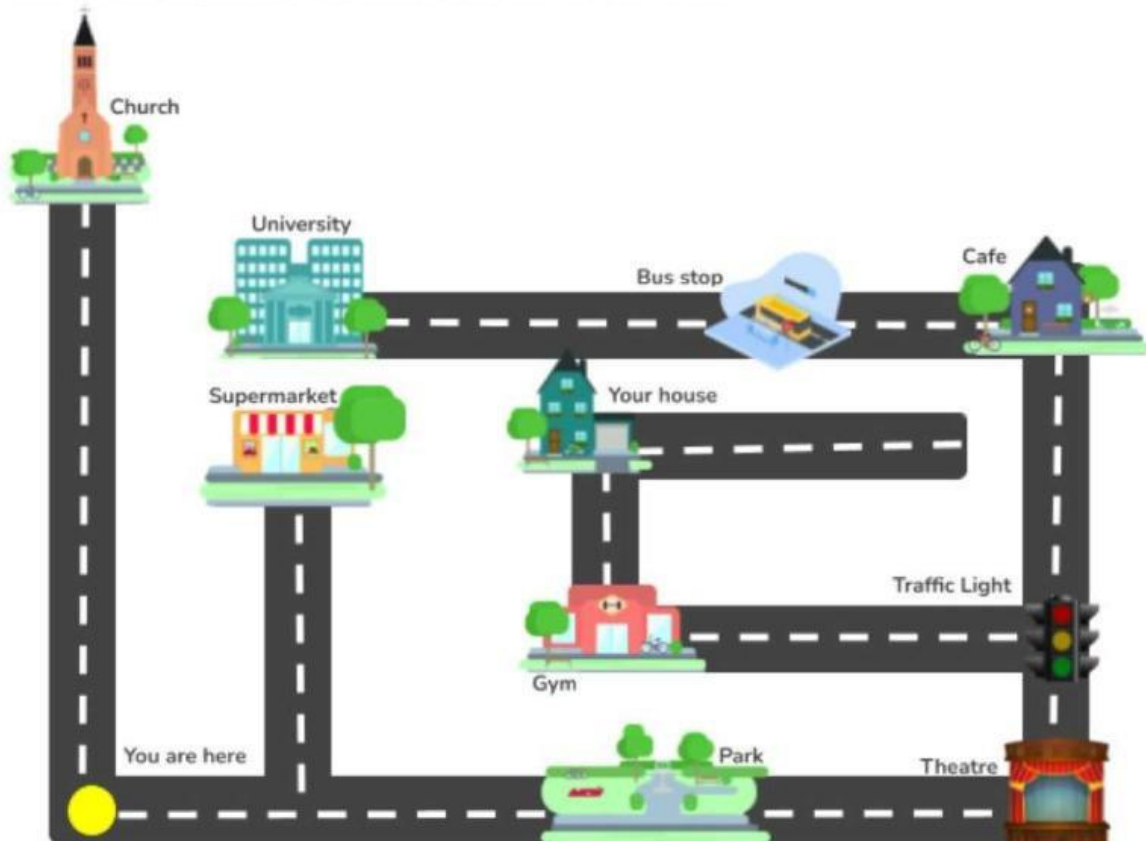




# HOMework

## 1 WHAT IS IT?

Look at the map below and then complete the exercises.



Read the directions below. Write down the location it takes you to.

1. Turn right and keep walking past the park. You will see the theatre at the corner. Turn left onto the road. Turn left again at the traffic light. Then you will find the location on the next corner.
2. Turn right and then turn left. Don't walk past the park, you need to turn before the park. Then go straight and you will find your location.
3. Turn right and go straight past the park until you find the theatre. Then turn left and go straight past the traffic light. You will find your location on the next corner.

Write directions from “*You are here*” to the following locations:

1. The university

---

---

---

2. The bus stop

---

---

---

3. The church

---

---

---

## WRITE DIRECTIONS

Write a paragraph below giving the directions from your house to your office / school / university. Be specific!

---

---

---

---

---