

Bass clef edition:

Triads

Consist of:

1. the first note (root)
2. the third note (m3)
3. and the fifth note (m5)

Triads of C Major



Triads of F Major



Triads of G Major



Triads of D Major



Fill with the correct key signature!

clue: look at the bottom note!(root)

Triads of:



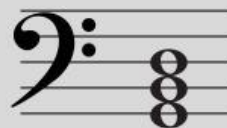
Triads of:



Triads of:



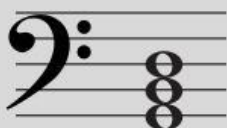
Triads of:



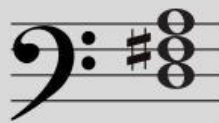
Triads of:



Triads of:



Triads of:



Triads of:

