

# Dyads

root and m5 in bass clef

is a set of two notes or  
itches from a chord

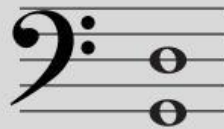
Dyad of C Major



Dyad of F Major



Dyad of G Major



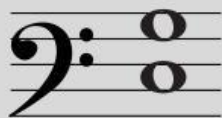
Dyad of D Major



# Fill with the correct key signature!

clue: look at the bottom note!(root)

Dyad of:



Dyad of:



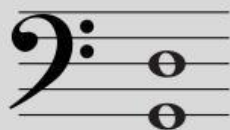
Dyad of:



Dyad of:



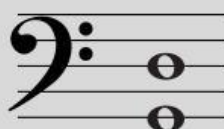
Dyad of:



Dyad of:



Dyad of:



Dyad of:

