

Test 3

Listening

Part I

- 5 questions -

Listen and draw lines. There is one example.

Tom

Eva

Grace

Ben



May

Nick

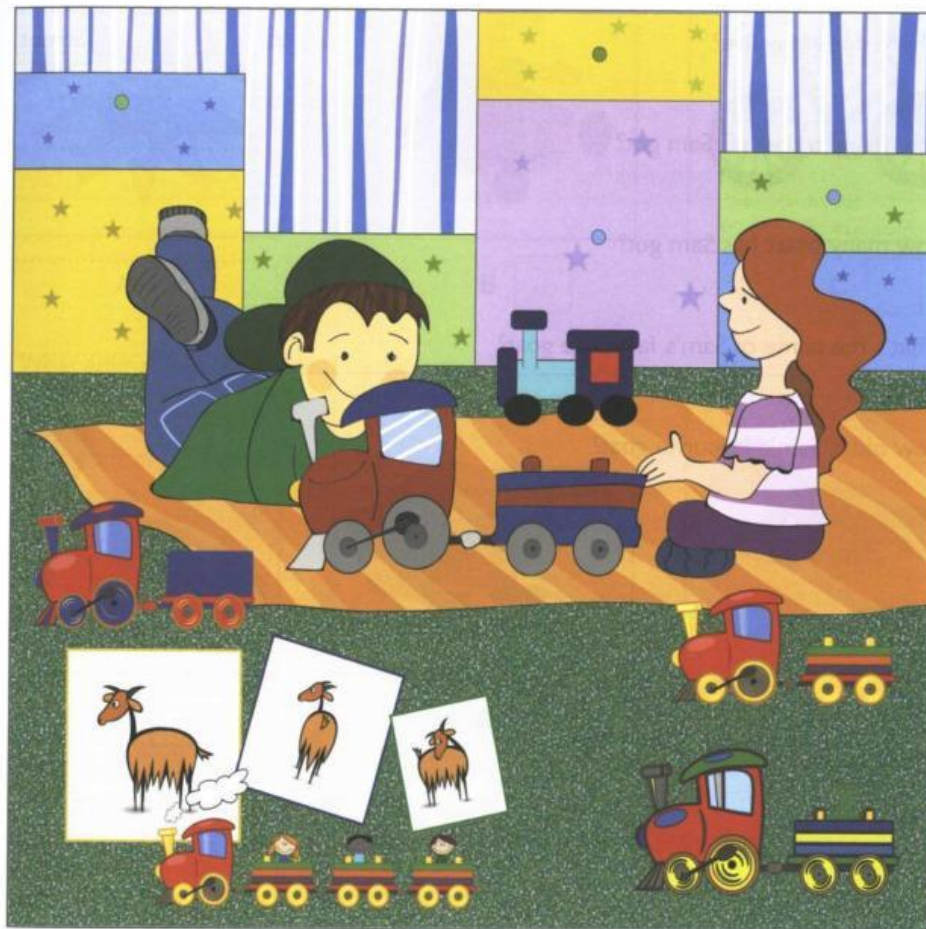
Anna

Listening

Part 2

- 5 questions -

Read the questions. Listen and write a name or a number.
There are two examples.



Examples

How old is Sam?

11/eleven

Who is Sam's friend?

May

Listening

Questions

- 1 Where does May live? in Street
- 2 How many trains has Sam got?
- 3 How many goats has Sam got?
- 4 What's the name of Sam's favourite goat?
- 5 How old is Sam's favourite goat?

Listening

Part 3

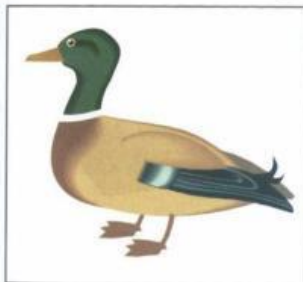
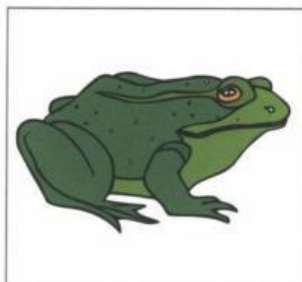
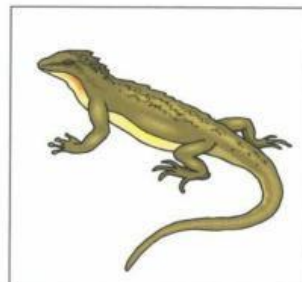
- 5 questions -

Listen and tick (✓) the box. There is one example.

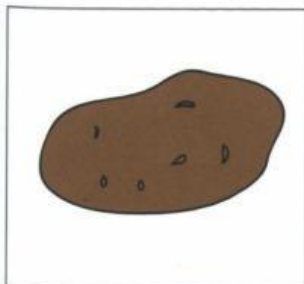
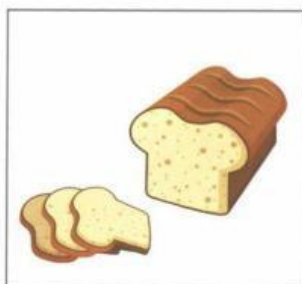
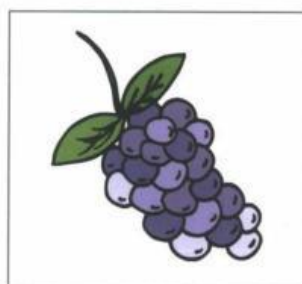
What is Jill's favourite toy?

A ☒B ☐C ☐

1 What animal is in the garden?

A ☐B ☐C ☐

2 Which is the baby's breakfast?

A ☐B ☐C ☐

Listening

3 Who is Pat phoning?



A

☐


B

☐

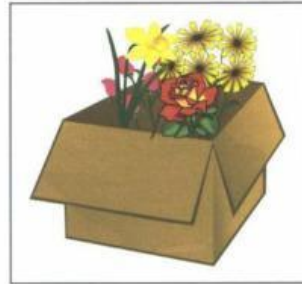

C

☐

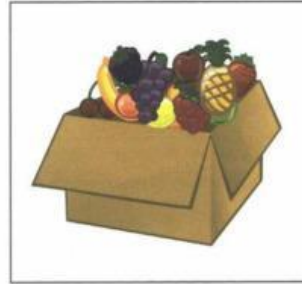
4 What's in the box?



A

☐


B

☐


C

☐

5 Where is Nick's drawing?



A

☐


B

☐


C

☐

Listening

Part 4
- 5 questions -

Listen and colour. There is one example.

