

8 True/False questions

Definition

In an experiment, the group that is exposed to the treatment

Term

control group

1 of 25



☐ True

☐ False

Definition

Describes a trait that covers over, or dominates, another form of that trait.

Term

pollination

2 of 25

A

☐ True

☐ False

Definition

factors that influence the functioning of an organism; weather, water and air quality,

Term

environment

3 of 25



☐ True

☐ False

Definition

The transfer of pollen from male reproductive structures to female reproductive structures in plants

Term

pollination

4 of 25



☐ True

☐ False

Definition

root system, a stem or trunk, branches, leaves, and reproductive structures of a plant

Term

plant structure

5 of 25



☐ True

☐ False

Definition

A reproductive process that involves two parents that combine their genetic material to produce a new organism, that is different from both parents



☐ True

☐ False

Term

asexual reproduction

6 of 25

Definition

A series of changes a living thing goes through during its life



☐ True

☐ False

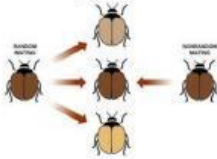
Term

species

7 of 25

Definition

the act of pairing a male and female for reproductive purposes



☐ True

☐ False

Term

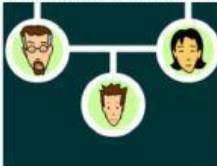
plant structure

8 of 25

9 Multiple choice questions

Definition

Passing of traits from parents to offspring



☐ trait

☐ genetics

☐ heredity

☐ chromosome

9 of 25



- ☐ asexual reproduction
- ☐ pollination
- ☐ variation
- ☐ prediction

11 of 25

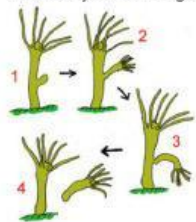
A group of closely related organisms that can mate to produce fertile offspring



- ☐ species
- ☐ mating
- ☐ sexual reproduction
- ☐ pollination

12 of 25

Process by which a single parent reproduces by itself



- ☐ asexual reproduction
- ☐ variation
- ☐ prediction
- ☐ life cycle

Definition

13 of 25

Product of reproduction; the young of a plant or animal



- ☐ mating
- ☐ mate
- ☐ offspring
- ☐ allele

Definition

14 of 25

A change or slight difference in the form of something

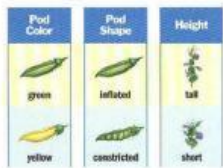


- ☐ asexual reproduction
- ☐ variation
- ☐ trait
- ☐ variable

Definition

15 of 25

A characteristic that an organism can pass on to its offspring through its genes.



- ☐ trait
- ☐ chromosome
- ☐ variation
- ☐ recessive

Definition

16 of 25

to pull towards; to stimulate interest



- ☐ mate
- ☐ attract
- ☐ pollination
- ☐ pollen

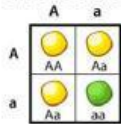
trait of an organism that can be masked by the dominant form of a trait

a

- ☐ mating
- ☐ recessive
- ☐ trait
- ☐ dominant

8 Matching questions

- ☐ the different forms of a gene; could be dominant or recessive



A. gene

18-25 of 25

B. ovaries

C. variable

D. pollen

E. chromosome

F. bacteria

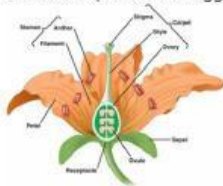
G. allele

H. genetics

- ☐ A factor that can change in an experiment



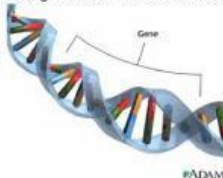
- ☐ Glands that produce the egg cells and hormones



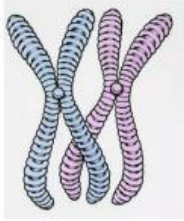
- ☐ tiny structures that contain the cells that will later become sperm cells



- ☐ A segment of DNA on a chromosome that codes for a specific trait



- ☐ A threadlike structure that carries genes, found in the nucleus

☐

single-celled organisms that lack a nucleus

☐

The scientific study of heredity

