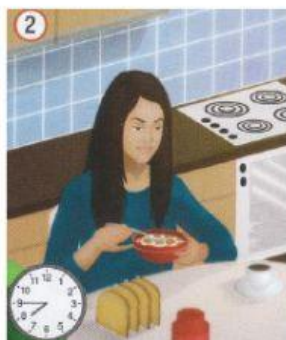
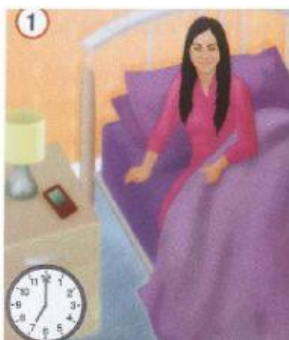


# A typical day

Name \_\_\_\_\_

Date \_\_\_\_\_



## Daily routines

Look at the pictures of Carol's routine. Then match these words or phrases to pictures 1-6.

get up ☐

have breakfast ☐

leave home ☐

finish work ☐

have lunch ☐

start work ☐

Listen and practise. CD2.24(R5.1)

Write the words and phrases from the table to these times of the day.

in the morning




---

---

---

---

---

---



---

---

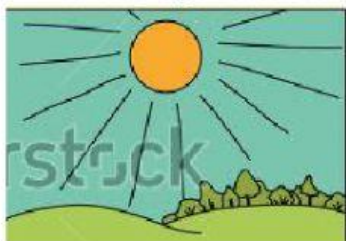
---

---

---

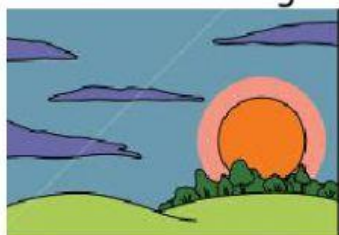
---

in the afternoon



Four horizontal lines for writing, consisting of two blue outer lines and two red inner lines.

in the evening



Four horizontal lines for writing, consisting of two blue outer lines and two red inner lines.

Work in pairs. Tell your partner what time you do the activities in the table above.

I get up at seven o'clock.

I get up at half past six.

What do you do at the same time?

Tell the class things that you and your partner do at the same time.

Jose and I leave home at eight.