

Name:

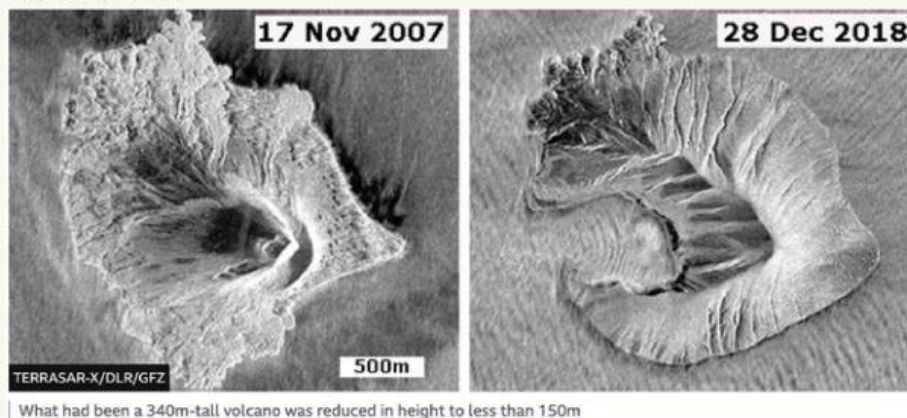
Date:

# READING COMPREHENSION

Read the story below, answer the comprehension questions on the next page, and discuss it.

## Anak Krakatau volcano collapse: 'Warning signs were there'

2 October 2019



By Jonathan Amos

BBC Science Correspondent

Anak Krakatau, the Indonesian island volcano that collapsed last December triggering a huge tsunami, did produce clear warning signals before the event. That's the assessment of a German-led team which has reviewed all the data.

The scientists say satellites in the months leading up to the catastrophe had observed increased temperatures and ground movement on the volcano. Earthquake and infrasound activity was also detected two minutes prior to the collapse of Anak's southwestern flank. When this mass slid into the sea, it sent a wall of water, up to 4m high, around the Sunda Strait.

More than 400 people died in the 22 December tragedy; a further 7,000 were injured and nearly 47,000 were displaced from their homes. Thomas Walter, from the German Research Centre for Geosciences GFZ in Potsdam, said any of the different signals viewed individually could not have been used to predict what happened at the island volcano, but taken together they might well have raised a red flag.

"If you took any of the sensors on their own, the interpretation would not be robust, but by pulling together all of the different sensors we can draw a picture of the cascade that was going on," Dr Walter told BBC News.

Name:

Date:

# READING COMPREHENSION

Answer these questions comprehensively!

- 1 What was being explained in the 'Anak Krakatau' news?  
(elaborate the information, predict the following situation, & the solution to prevent the similar event)

---

---

---

---

- 2 Can you spot the similarities event with your pair's news?

---

---

---

---

Your pair news & insight

---

---

Tick the activities you have been accomplished!

- 1 Answering the questions
- 2 Discuss your answer with your pairs.

☐☐



Name:

Date:

# READING COMPREHENSION

Read the passage and answer these questions carefully!

- 1 What is the news about?
  - A. The Anak Krakatau mountain is exploded.
  - B. The tsunami nearby the Anak Krakatau mountain.
  - C. The Anak Krakatau mountain activate the tsunami.
  - D. The Anak Krakatau mountain produced smoke and lava.
  - E. The damage around Anak Krakatau mountain.
- 2 The following is the warning signal before the event, except ....
  - A. there was an earthquake activity.
  - B. the temperature was increased.
  - C. there was infrasound activity.
  - D. there was storm before the event.
  - E. ground movement on the volcano.
- 3 The source of the news is ....
  - A. Thomas Walter
  - B. Jonathan Amos
  - C. BBC Science Correspondent
  - D. BBC News
  - E. German Research Centre
- 4 The following sentence that best describes the author's intention in this study is ....
  - A. describe the activity of Anak Krakatau mountain.
  - B. inform the readers about the signals before the catastrophe.
  - C. tell the readers how tsunami occurred.
  - D. entertain the readers about the event.
  - E. explain the damage caused by the Anak Krakatau activity.
- 5 "..., the interpretation would not be robust, ..." (par.4)  
The word robust has the closest meaning with ....
  - A. low
  - B. strong
  - C. wide
  - D. high
  - E. weak