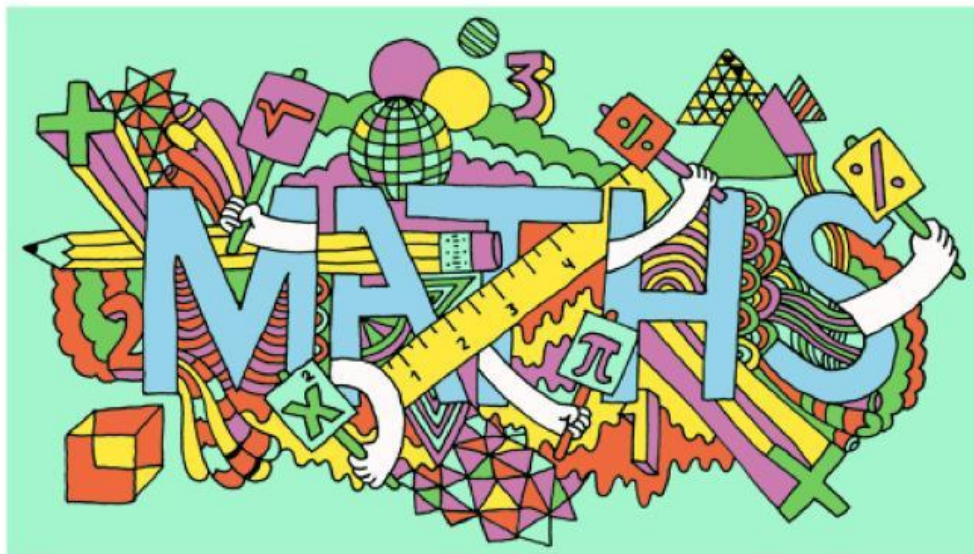




# Maths Department

## Pre-test Practice **Mk5**

Number logic, areas and perimeters, ratios, shapes.



Name: \_\_\_\_\_

Question 1				
<p>What is <math>514 \times 677</math></p>				
347,978	347,977	347,997	3478	34, 978

Question 2				
<p>What is <math>271 \times 25 \times 345 \times 4</math> ?</p>				
9,349, 050	9,349,500	9,349,005	9,349,550	9,349,055

Question 3				
<p>Which number is prime?</p>				
17,187	111,317	17,289	77,175	771,111

Question 4

What is the lowest common **multiple** of 48 and 56?

2

4

8

16

336

Question 5

What is  $3000 \div \frac{1}{3}$  ?

9000

1000

6000

1500

900

Question 6

What is  $875 \div 25$ ?

850

350

37

35

42

Question 7

What is the perimeter of a regular decagon of side 17 cm?

8 cm

27 cm

170 cm<sup>2</sup>

1710 cm

170 cm

Question 8

A square has an area of 64 cm<sup>2</sup>. What is the length of one side?

8 cm<sup>2</sup>

16 cm

8cm

32 cm

4 cm

Question 9

A square has an area of 49 cm<sup>2</sup>. What is the perimeter?

7 cm

28 cm

28 cm<sup>2</sup>

14 cm

14 cm

Question 10

A square has a perimeter of 16 cm. What is the length of one side?

4 cm<sup>2</sup>

8 cm

4 cm

2 cm

12 cm

Question 11

A square has a perimeter of 40 cm. What is its area?

400 cm

100 cm

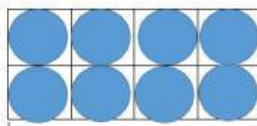
400 cm<sup>2</sup>

1600 cm<sup>2</sup>

100 cm<sup>2</sup>

Question 12

Pills are sold in rectangular arrays such as this pack of eight pills. Which number of pills could only be sold as a long thin pack of pills?



14

15

16

17

18

Question 13

A rectangle has a perimeter of 24 cm. It has a length of 7 cm. What is the width of the rectangle?

5 cm

7 cm

17 cm

12 cm

12 cm

Question 14

A rectangle has a perimeter of 40 cm. Which of these could NOT be its dimensions?

20cm by 1 cm

19 cm by 1 cm

15 cm by 5 cm

8 cm by 12 cm

11 cm by 9 cm

Question 15

What do all these numbers have in common?

64      8      1      27      125

They are all square numbers

They are all less than 125

They are all prime numbers

They are all divisible by 3

They are all cube numbers

Question 16

Jasper and Gemma share sweets in a ratio of 5 : 2. They share a total of 28 sweets. How many does Jasper get?

9

4

20

16

8

Question 17

Alfie and Ed share their winnings in a ratio of 4 : 1. Alfie gets £12 **more than** Ed. How much money do they share altogether?

£16

£20

£24

£4

£12

Question 18

A box has twice as many milk chocolates as white chocolates. The box has 33 chocolates altogether. How many milk chocolates are there?

11

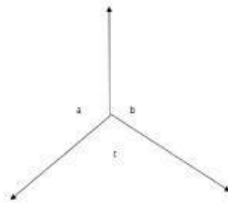
3

12

22

24

Question 19



The angles a, b and c are equal. What is the order of rotational symmetry of the diagram?

0

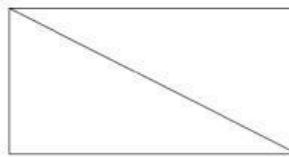
4

3

2

1

Question 20



I fold a rectangle along its diagonal. What outline shape do I get?

square

pentagon

triangle

kite

hexagon