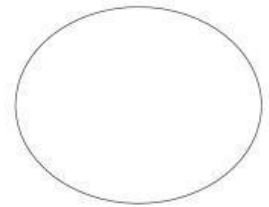


# September Test

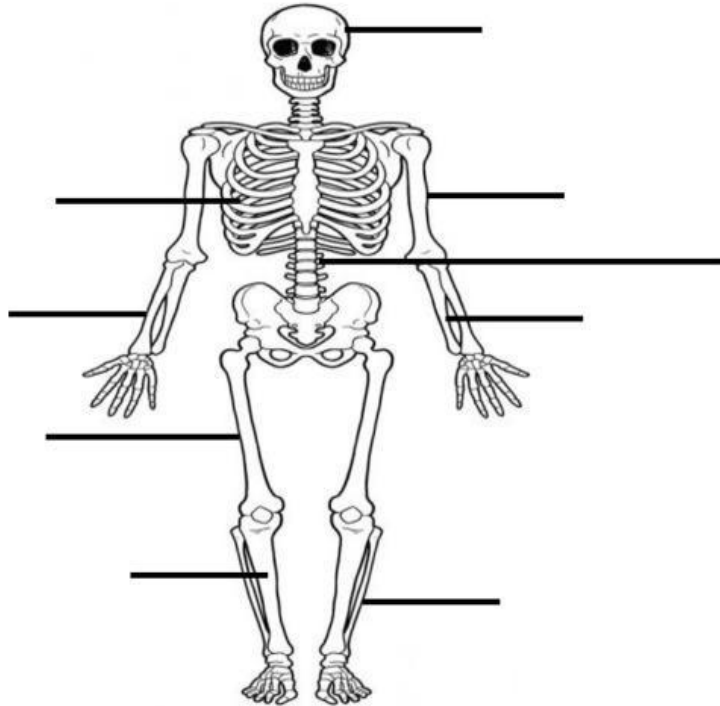
## Science Test

Name: \_\_\_\_\_ Total Marks

Date: \_\_\_\_\_ Duration: 1h



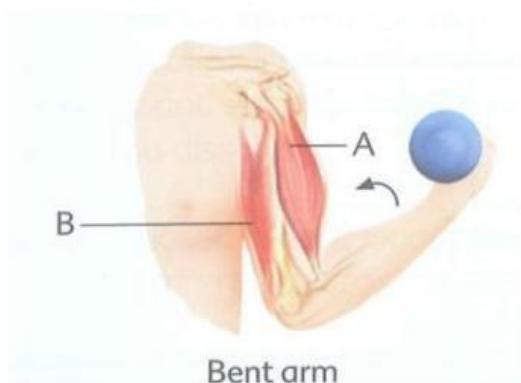
### I. Label the diagram: Identify the names of the bones being pointed below.



### II. Fill in the blanks with with the correct words.

1. The \_\_\_\_\_ ( **joints / skeleton** ) give shape and support to our body.
2. The place where two or more bones join together is called a ( **bones / joint** )
3. The skull protect our \_\_\_\_\_. ( **heart / brain** )
4. The rib protect our \_\_\_\_\_. ( **lung and heart / brain and heart** )

### III. The diagram below shows the muscles of our upper arm. Which of the following correctly describes muscles **A** and **B** when the arm bent?



	Muscle A	Muscle B
(1)	Contracted	Relaxed
(2)	Relaxed	Contracted
(3)	Contracted	Contracted
(4)	Relaxed	Relaxed