

FAMILY MEMBERS

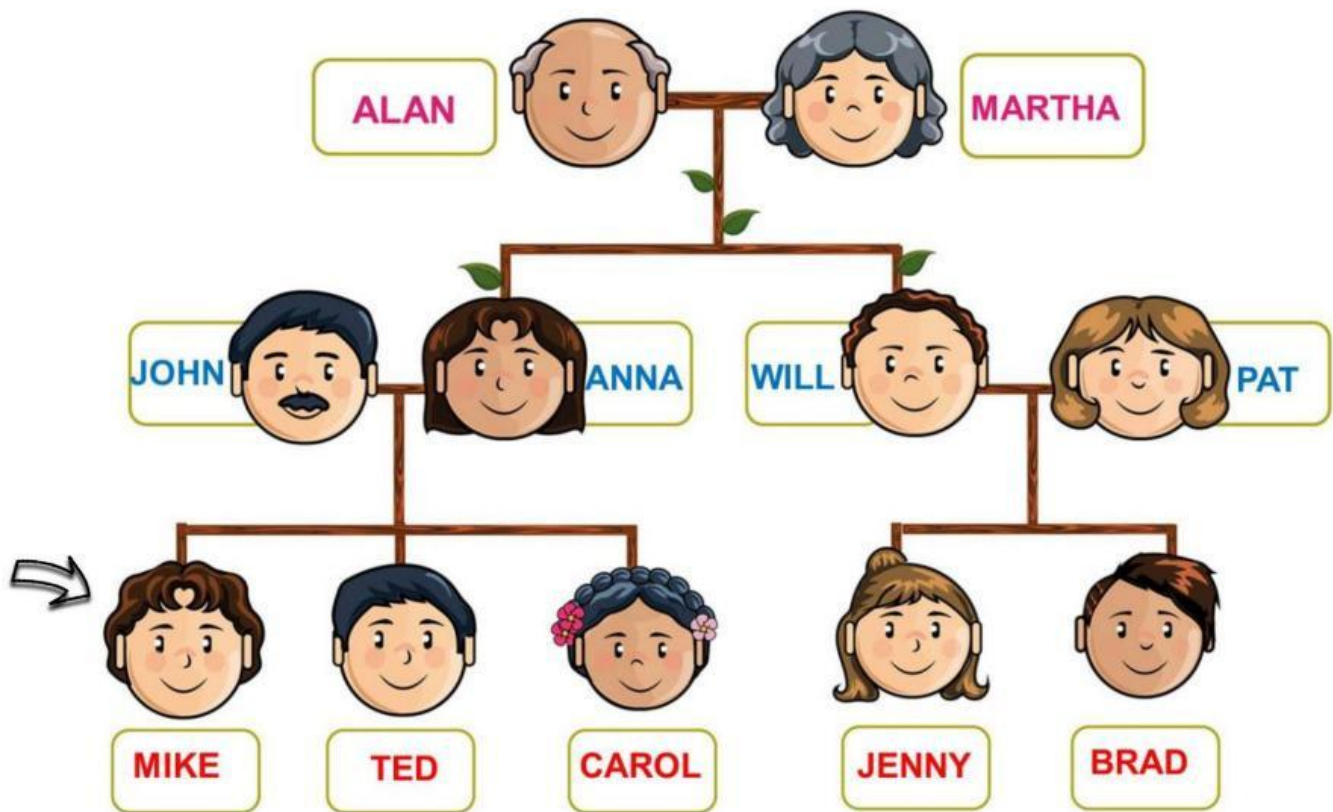


MIKE

Hi, my name is Mike Smith. I'm 13 years old and I live in Manchester, England.

Meet my family:

MIKE'S FAMILY



FAMILY MEMBERS

Match **MIKE'S** family members:

There are 15 cartoon illustrations of family members and 15 empty rectangular boxes for matching. The family members are arranged as follows:

- Row 1: An elderly man, a young girl, a young woman, and a couple (man and woman) with a blue arrow pointing to the man.
- Row 2: A young boy, a young woman, a couple with a young boy below them, and a man with a mustache.
- Row 3: A couple, a woman with flowers in her hair, and a couple with a blue arrow pointing to the woman.
- Row 4: A couple with a young woman below them, a young boy, a family of three (mother, father, daughter), and a woman.

father ∞ mother ∞ brother ∞ sister ∞ grandmother ∞
 grandfather ∞ uncle ∞ aunt ∞ son ∞ cousin ∞
 parents ∞ daughter ∞ husband ∞ wife ∞ siblings

FAMILY MEMBERS

Complete the sentences:

1. Alan is Mike's _____.
2. John and Anna are Mike's _____.
3. Jenny is Mike's _____.
4. Will is Mike's _____.
5. Ted is Mike's _____.
6. Brad is Will and Pat's _____.
7. Pat is Mike's _____.
8. Martha is Mike's _____.
9. Carol is Mike's _____.
10. Will is Pat's _____.
11. Ted and Carol are Mike's _____.
12. Martha is Alan's _____.
13. Carol is John and Anna's _____.

- ✓ sister
- ✓ uncle
- ✓ siblings
- ✓ grandfather
- ✓ daughter
- ✓ son
- ✓ parents
- ✓ grandmother
- ✓ wife
- ✓ cousin
- ✓ husband
- ✓ brother
- ✓ aunt

