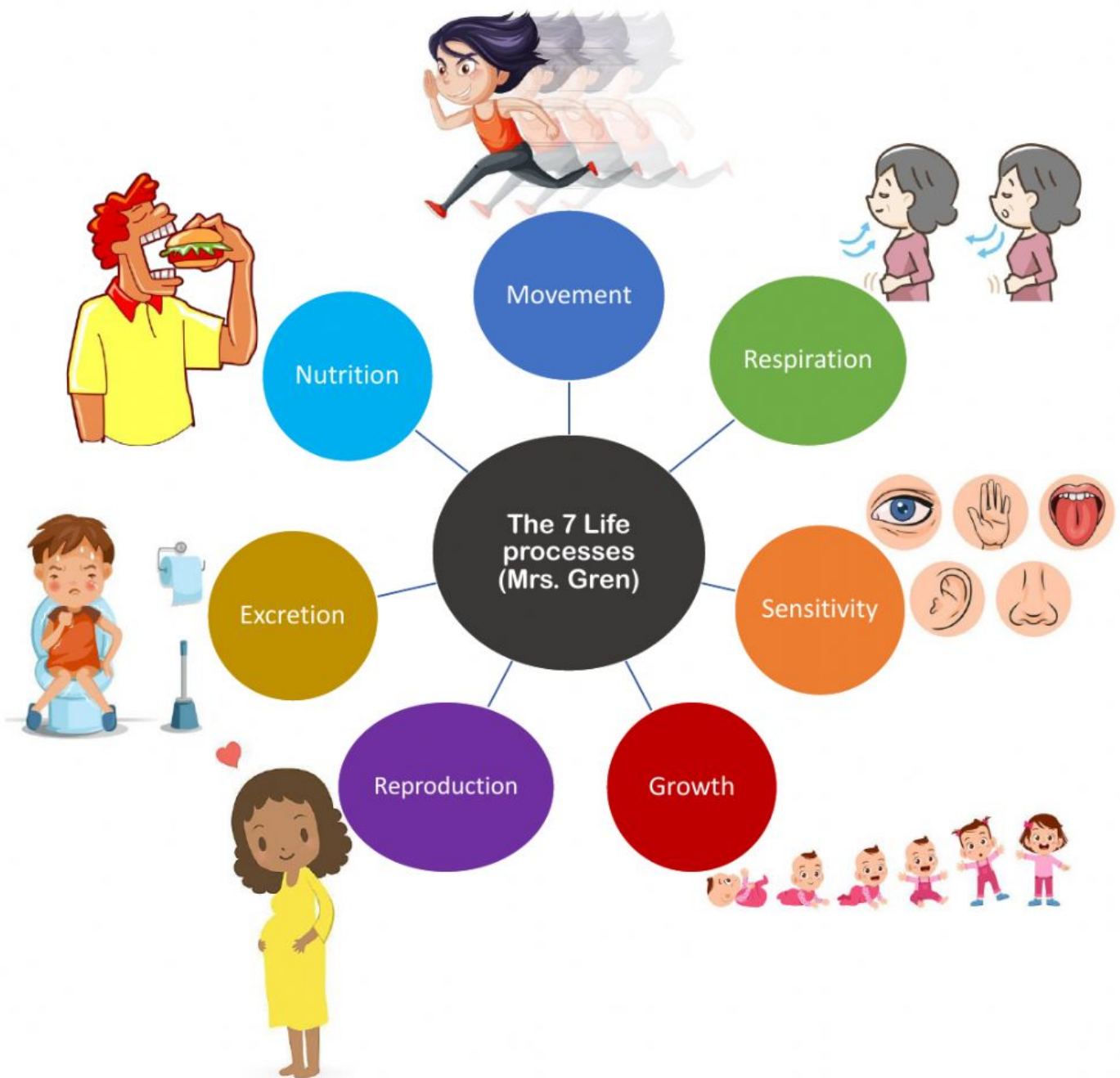


Life processes:

All living things must be able to do all seven life processes.



Drag and drop the life processes below to show which one is shown in each picture.

Movement

Respiration

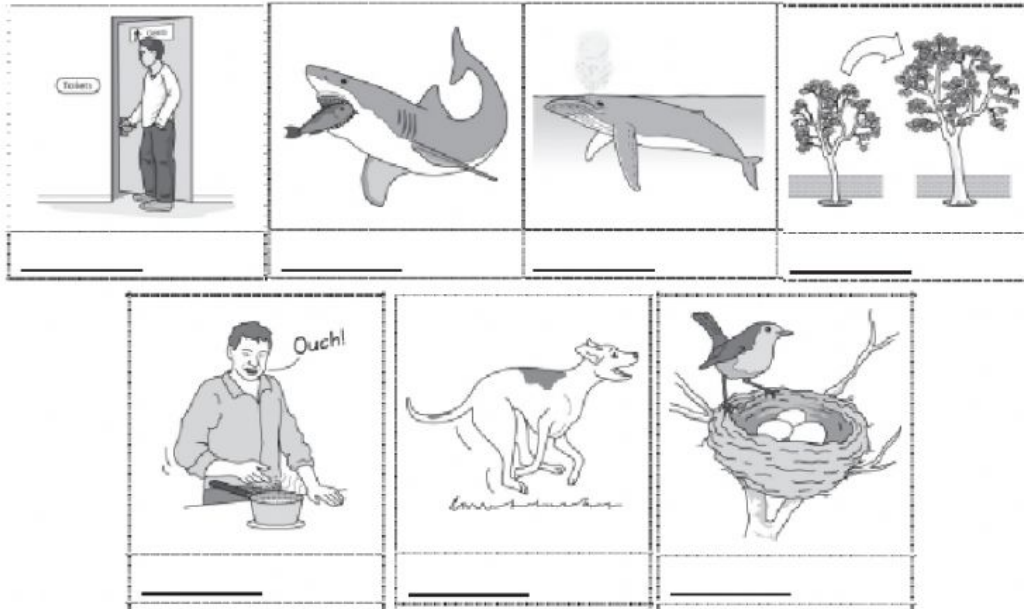
Sensitivity

Growth

Reproduction

Excretion

Nutrition



Match each organ name with its picture:

Liver

Kidney

Stomach

Heart

Lungs

Bladder

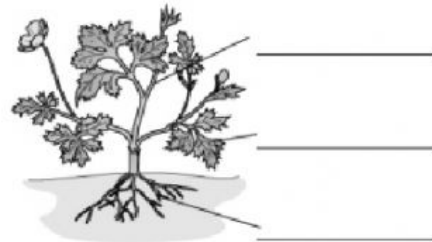
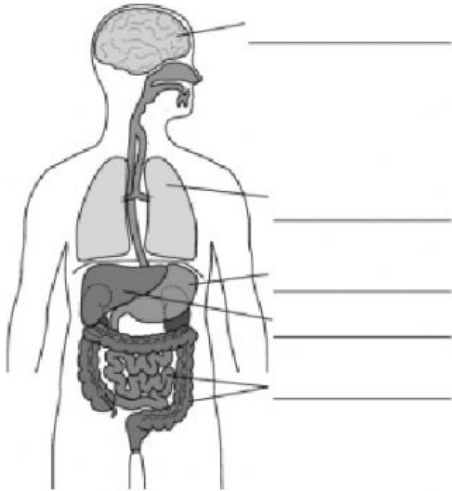
Brain

Intestines

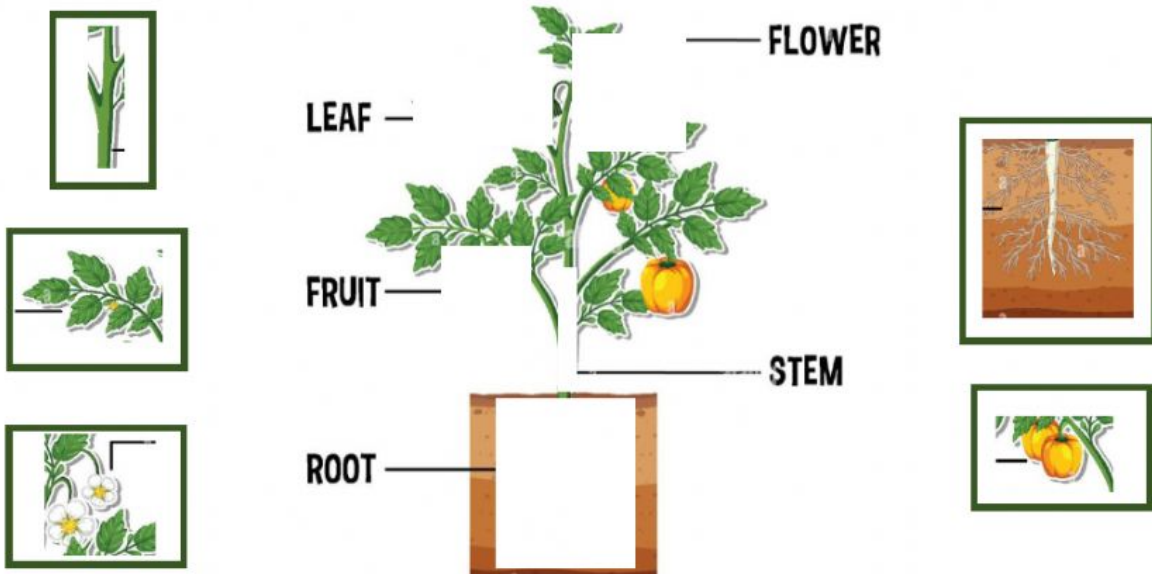


Drag the label below and drop them where they belong:

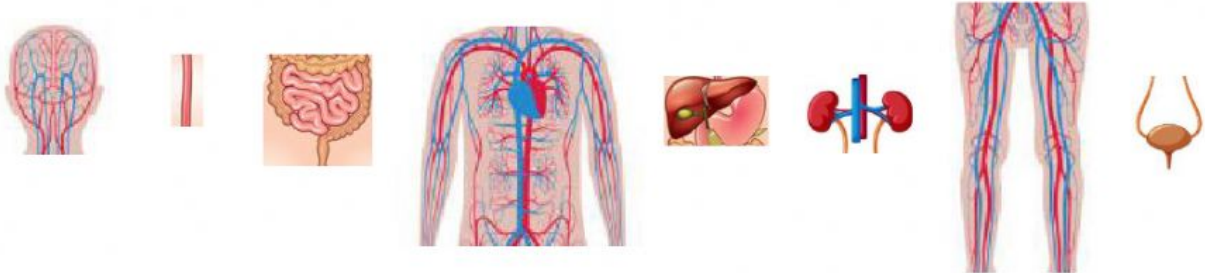
brain	intestines	leaf	liver	lung	root	stem	stomach
-------	------------	------	-------	------	------	------	---------



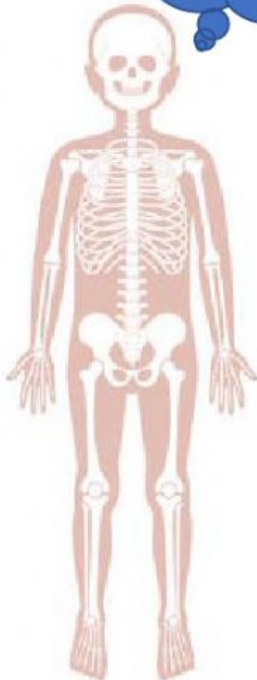
Arrange the plants organs below into a plant (organism).



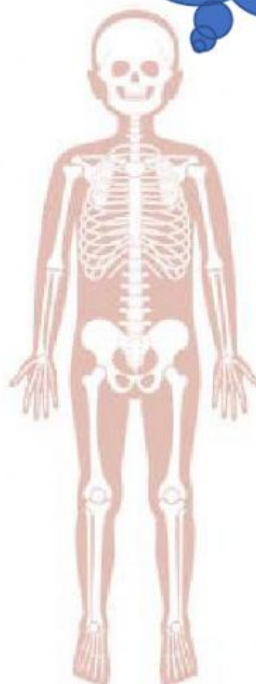
Look at the three skeletons below and help them find the appropriate organs to do their desired function by dragging and dropping the suggested organs:



I want to be able to break down food.






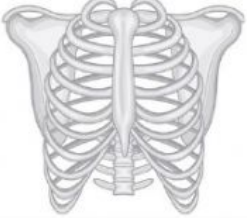





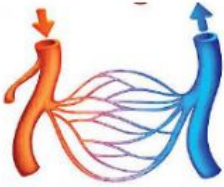


I want to be able to carry nutrients and oxygen all around my body.



I want to be able to get rid of wastes.



Complete the organ systems by dragging each of the suggested organs and dropping them into their assigned box.

			
Heart	Liver	Bladder	Ribs
			
Kidneys	Lungs	Intestines	Roots
			
Diaphragm	Blood vessels	Stem	Stomach




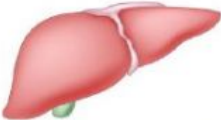



Circulatory system

Digestive system

Urinary system

Transport system

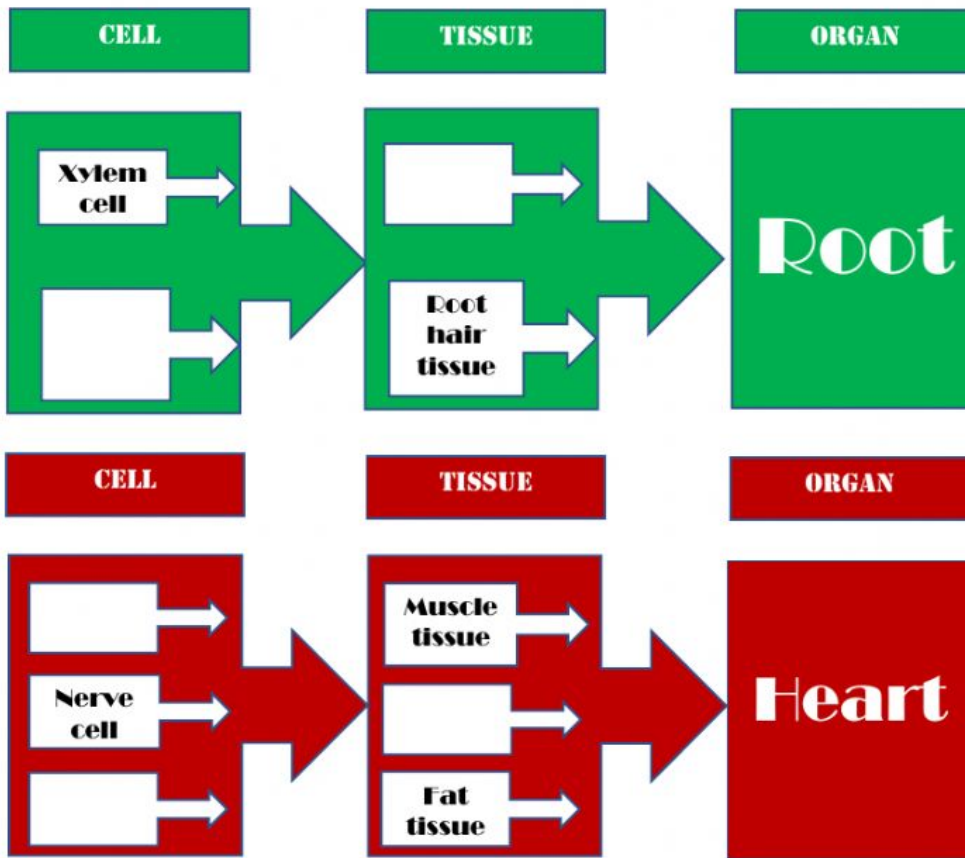
Draw lines to match the organ with its name and its job. The first organ has been done for you.

Picture	Name	Job
	lungs	controls the body
	brain	gets oxygen into the blood
	liver	pumps blood
	leaf	makes food
	heart	makes and destroys substances
	intestines	breaks up food
	stomach	breaks up food and takes it into the blood

Hand-drawn lines for matching:

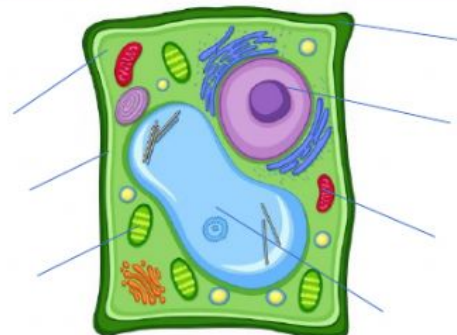
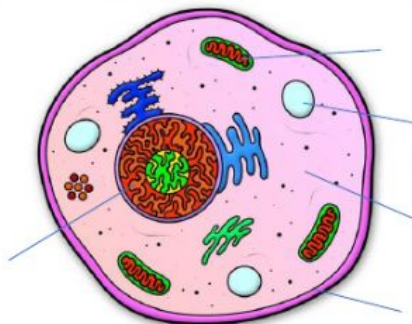
- A line from the first **Picture** (small intestine) to the first **Name** (lungs).
- A line from the first **Name** (lungs) to the first **Job** (controls the body).
- A line from the last **Name** (stomach) to the last **Job** (breaks up food and takes it into the blood).

Type the appropriate cell and tissue to make each of the organs below:



Drop the correct label at each of the boxes below to label the cells:

Mitochondria Nucleus Small vacuole Cell membrane Large vacuole Mitochondria
 Cytoplasm Cell wall Nucleus Cytoplasm Chloroplast Cell membrane



Match the organelles below with their functions:

cell surface membrane
cell wall
chloroplast
cytoplasm
mitochondria
nucleus
vacuole

where the cell's activities happen
where energy is released from respiration
where plant cells make their food
a cellulose box that helps support the cell
a thin bag that controls what goes into and out of the cell
storage space
the 'control centre' of the cell

Help the students below examine their specimen using a microscope by choosing the steps and arranging them in the right order:

1	
2	
3	
4	
5	

