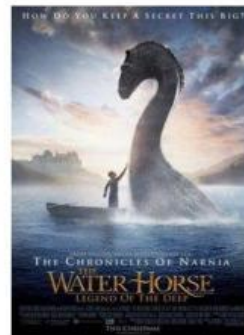


ACTIVITY 12 – PASSIVE VOICE
THE WATER HORSE: LEGEND OF THE DEEP



A. DISCUSS THE FOLLOWING QUESTIONS WITH A PARTNER:

Do you know anything about the Ness Monster?

What do you know about it?

- 1- Do you think it is possible that unknown creatures live in the deep of lakes and oceans?
- 2- What would you do if you found the egg of a pre-historic animal in your garden?

B. WATCH THE MOVIE SEGMENT AND COMPLETE THE SENTENCES WITH THE SIMPLE PAST TENSE OF THE VERBS IN PARENTHESES. WRITE AFFIRMATIVE OR NEGATIVE VERB FORMS ACCORDING TO WHAT YOU SEE.

EX The kids caught (catch) two employees kissing in the kitchen.

- 1) The dog (chase) the water horse around the house.
- 2) The dog (hurt) the water horse.
- 3) The water horse accidentally (hit) an expensive vase.
- 4) The man (drop) a statue.
- 5) The carpet (scare) the water horse.
- 6) The animals (break) several valuable items.
- 7) The dog (spill) soup on the guests.
- 8) The water horse (grab) a fish with its mouth.
- 9) The boys (find) the water horse in the garden.

<http://moviesegmentstoassessgrammarggoals.blogspot.com>

Claudio Azevedo

C. NOW REWRITE THE SENTENCES ABOVE USING THE PASSIVE VOICE.

EX: Two employees were caught kissing in the kitchen.



1.
2.
3.
4.
5.
6.
7.
8.
9.