

Name _____

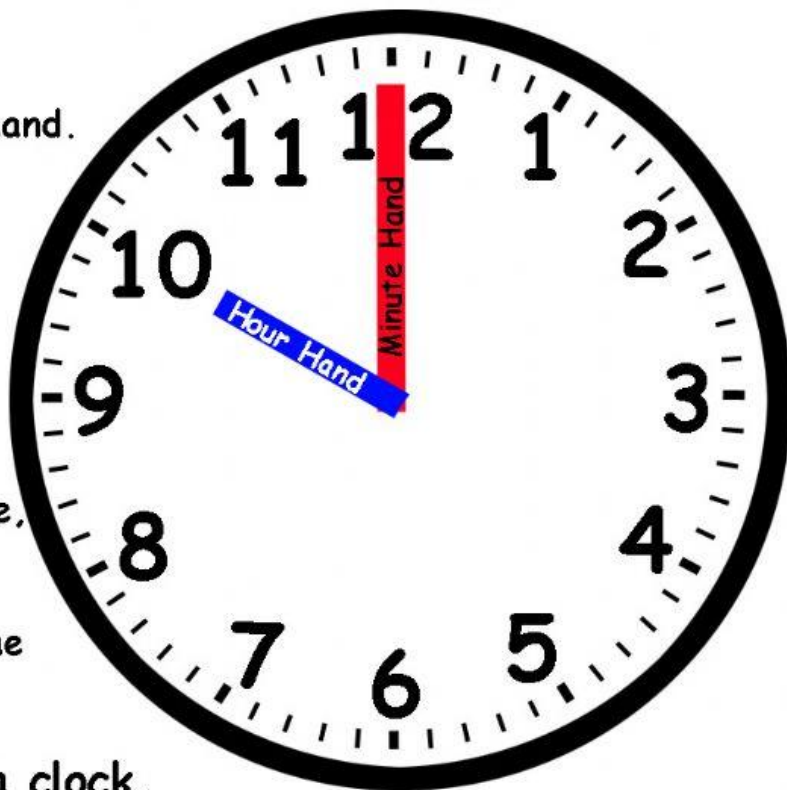
Date _____

Telling Time

The short hand is called the hour hand.
It tells us the hour.

The long hand is the minute hand.
It tells us the minute.

In the big clock, the minute hand is pointing to the 12. When that happens we say o'clock. For example, we say 3 o'clock, 4 o'clock, etc. In the big clock we can also see that the hour hand is pointing to the 10. This means it's 10 o'clock.



Write the time shown on each clock.



Hour hand: 10
Minute hand: 12
10 o'clock



Hour hand: ____
Minute hand: ____
____ o'clock



Hour hand: ____
Minute hand: ____
____ o'clock



Hour hand: ____
Minute hand: ____
____ o'clock



Hour hand: ____
Minute hand: ____
____ o'clock



Hour hand: ____
Minute hand: ____
____ o'clock