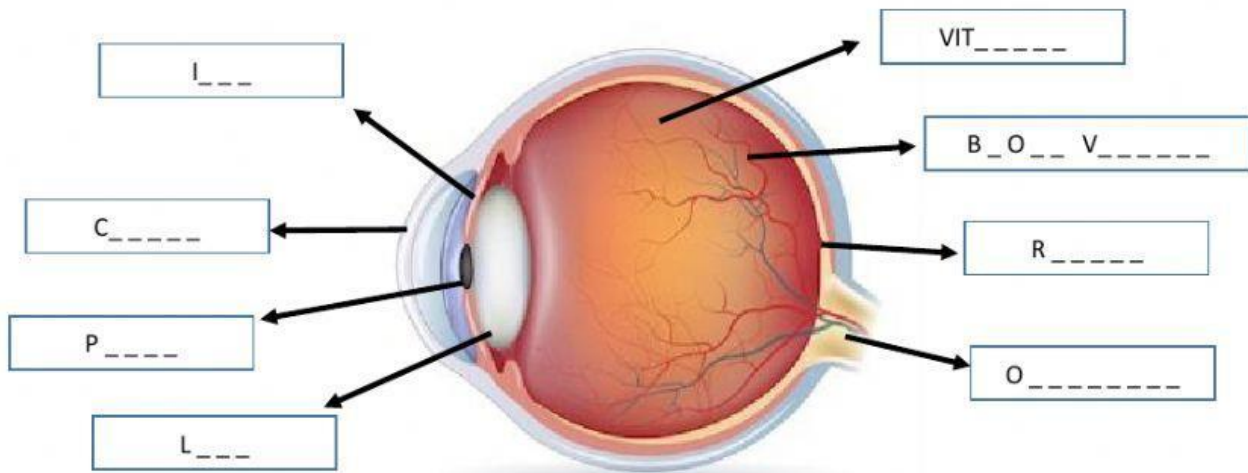


## GREEN GROUP

Please answer the following questions.

1. Label the diagram:



shutterstock.com • 174265226

HINTS: write only the words in capital in the boxes above:

1. CORNEA-Outer protective layer of eye
2. IRIS-colored part of eye
3. PUPIL-black hole in eye through which light enters eye
4. LENS-clear lens that bends light to retina
5. VITREUOS HUMOR-liquid present in eye
6. BLOOD VESELS-brings blood to eye
7. RETINA-inner lining of eye
8. OPTIC NERVE-nerve which takes signal from eye to brain

2. What is function of lens?
  - A. Bend light to reach retina
  - B. Protect eye
  - C. Give blood to eye
  - D. Take signal to brain
3. What are the special cells which detect light in the eyes?
  - a. Retina
  - b. Lens
  - c. Rods and cones
  - d. Cornea and iris