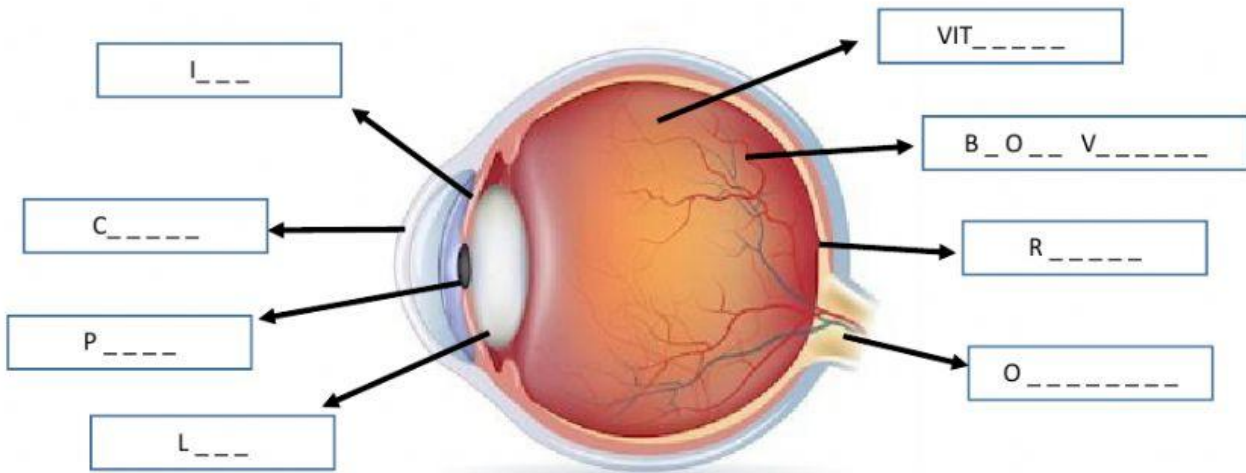


Please answer the following questions.

1. Label the diagram:



shutterstock.com • 174265226

HINTS: write only the words in capital in the boxes above:

1. CORNEA-Outer protective layer of eye
2. IRIS-colored part of eye
3. PUPIL-black hole in eye through which light enters eye
4. LENS-clear lens that bends light to retina
5. VITREOUS HUMOR-liquid present in eye
6. BLOOD VESSELS-brings blood to eye
7. RETINA-inner lining of eye
8. OPTIC NERVE-nerve which takes signal from eye to brain

2. What is function of lens?
 - A. Bend light to reach retina
 - B. Protect eye
 - C. Give blood to eye
 - D. Take signal to brain

3. What are the special cells which detect light in the eyes?
 - a. Retina
 - b. Lens
 - c. Rods and cones
 - d. Cornea and iris