

STRUCTURE OF SEEDS

Drag and drop the answers in correct place.

Seed coat

Plumule

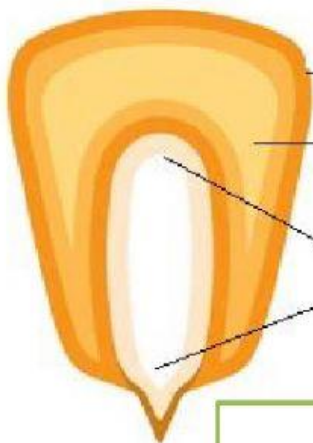
embryo

Cotyledon

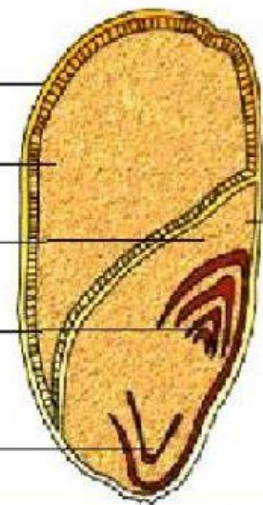
Endosperm

Radicle

Monocot seed



External structure of maize seed



Internal structure of maize seed

Seed coat

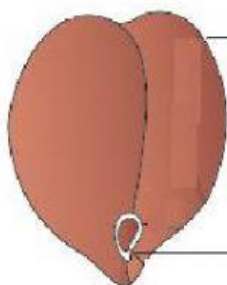
Micropyle

cotyledon

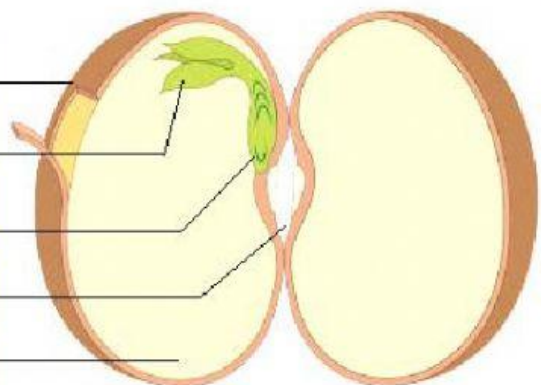
radicle

plumule

Dicot seed



External structure of gram seed



Internal structure of bean seed