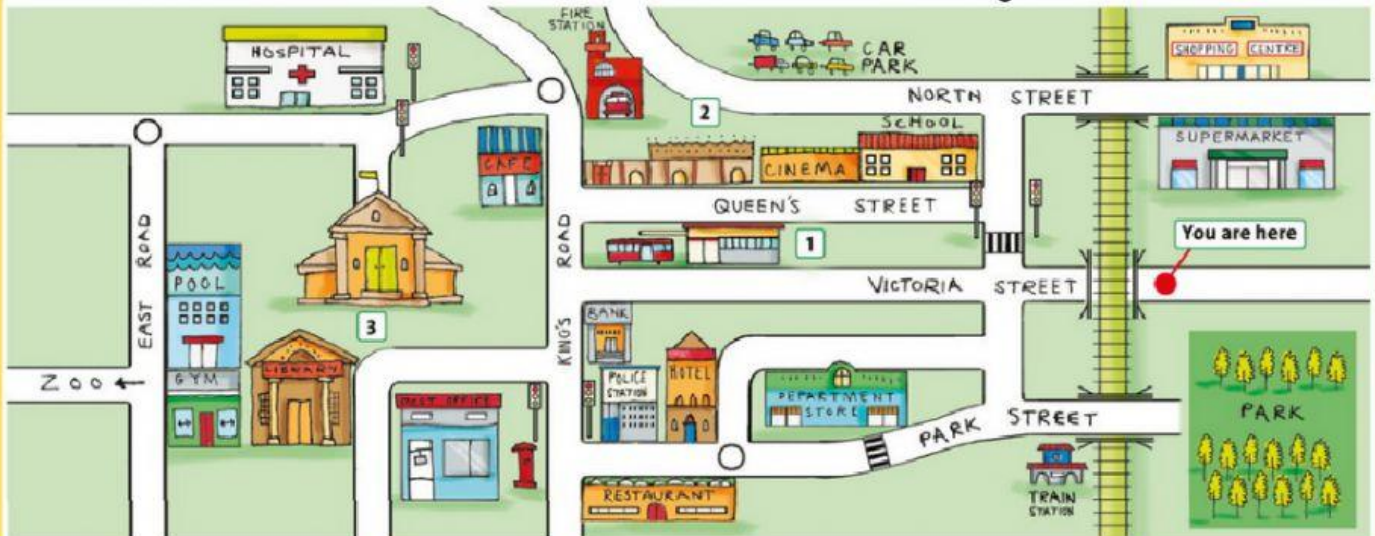


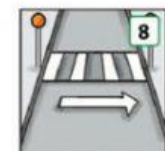
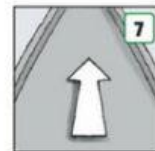
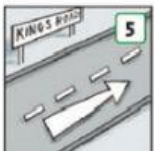
# GIVING DIRECTIONS

## 1. Find these places/objects on the map below

corner --- railway --- bridge --- traffic lights --- street --- junction --- roundabout ---  
dead end --- crossroad --- zebra crossing



## 2. Match the directions with the pictures.



Go straight on.  
Go along King's Road.  
Take the first left.  
Go to the end of the road.

Go past the bank.  
Turn right at the crossroads.  
Cross the road.  
Go under the bridge.

## 3. Look at the map again, choose the correct options.

1. Where is the school?

- a) It's opposite the Department store.
- b) It's next to the cinema.
- c) Go along East Road, it's on your left.

2. Where can I find the Cafe?

- a) Go along King's Road, it's on the corner, to your left.
- b) It's between the bank and the hotel.
- c) Go to the end of North Street, it's on your right.

3. Can I get to the fire station from the zoo?

- a) Go along King's Road, turn right to Queen's Street, it's on your right.
- b) Go over the bridge to Park Street, go past the hotel, and you're here.
- c) Go along East Road, turn right, go past the hospital, go straight and here it is.

4. Where is the cinema?

- a) It's opposite the hotel.
- b) It's between the school and the theatre.
- c) Go along Victoria street, it's on your right.

5. Where is the shopping centre?

- a) Go past the gym, it's on your right.
- b) It's on the corner of Queen's Street.
- c) It's opposite the supermarket.

6. How can I get to the park from the car park?

- a) Go along North Street, to the end, it's on your left.
- b) Go along North Street, turn right, then take the 1st left, it's on the corner.
- c) Go along North Street, turn right, go straight, turn left to go above the bridge and you're here.