

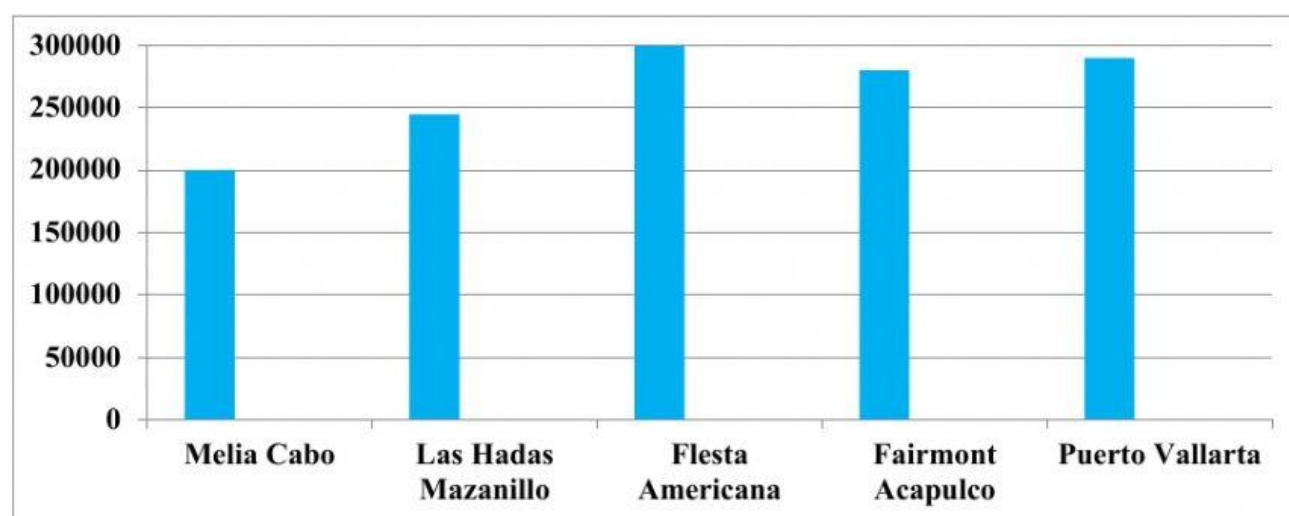
## UNIT 7: FAME AND THE MEDIA

### E. WRITING

**Exercise 1.** When a graph or chart appears in IELTS Writing Task 1, it will either *compare data at the same point in time* or *show trends over a period of time*. A *trend* is a general development or a change in a situation.

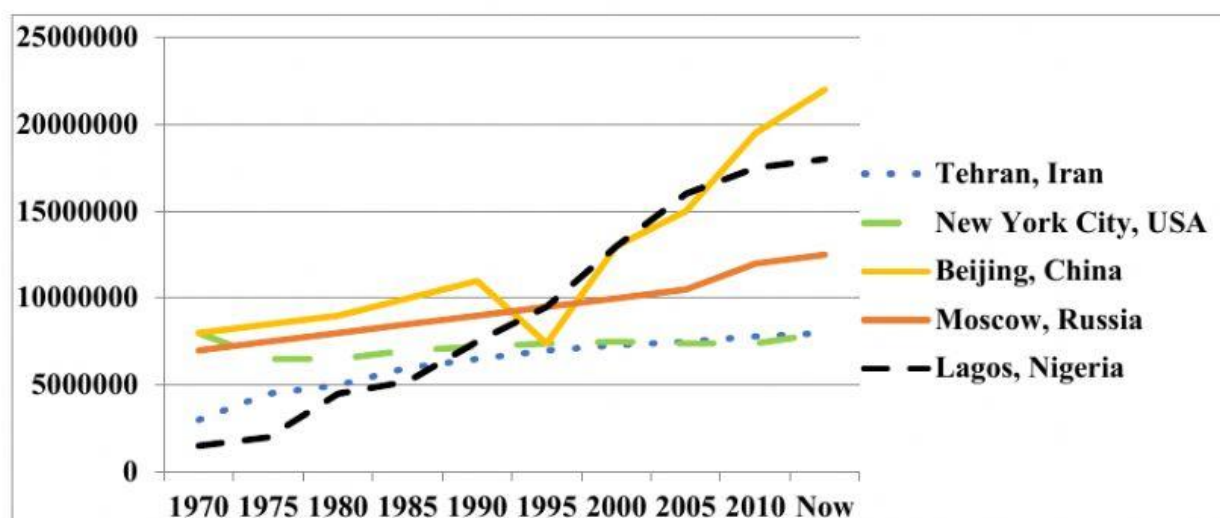
Look at the graphs and charts. Then choose the correct descriptions.

#### 1. Tourist in Mexico



- This chart compares the number of visitors to five different holiday destinations in Mexico at the same point in time.
- This chart shows the number of visitors to five different holiday destinations in Mexico over a period of time.

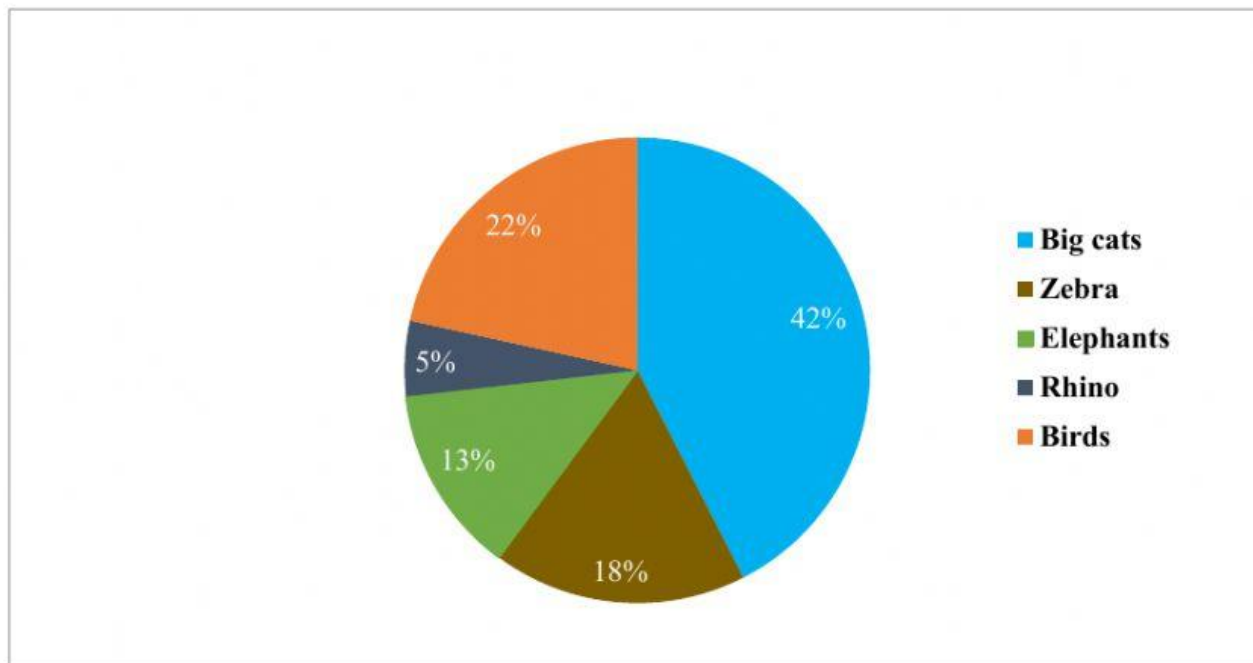
#### 2. The populations of five different cities



## IELTS FOUNDATION 2

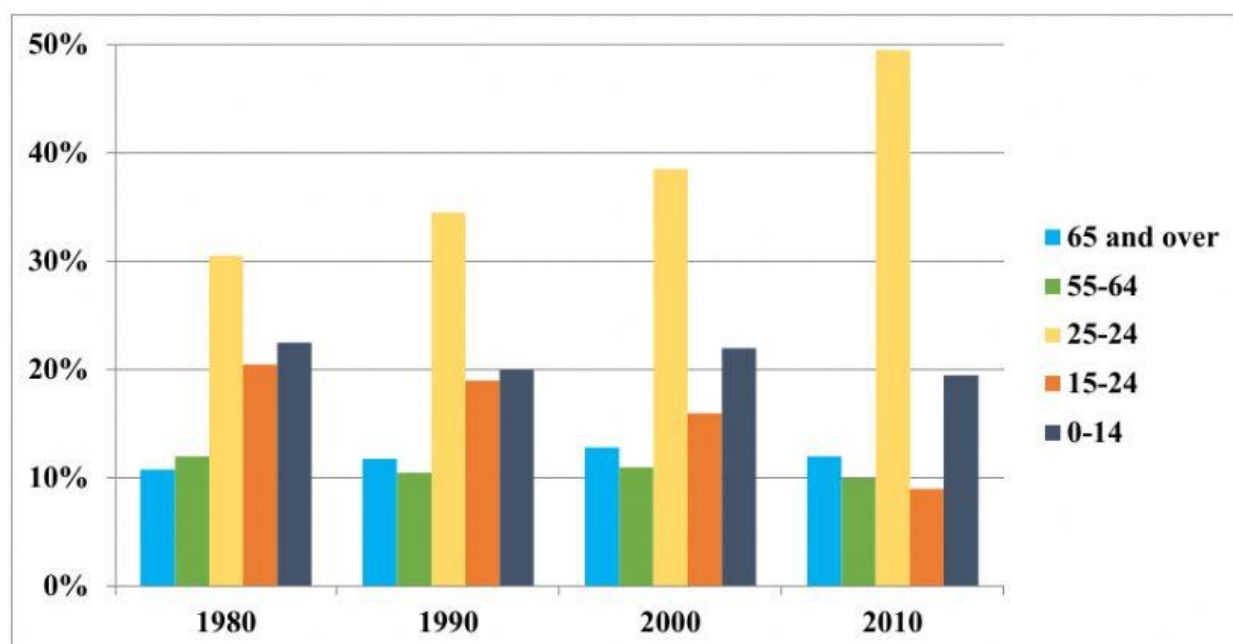
- This graph compares the populations of five different cities in the world at the same time.
- This graph compares the populations of five different cities in the world over a period of time.

### 3. Animals in the Maasai Mara



- This chart shows the numbers of different types of animal in the Maasai Mara National Reserve in Kenya at the same point in time.
- This chart shows the numbers of different types of animal in the Maasai National Reserve in Kenya over the period of time.

### 4 . The age of the population of Ireland between 1985 and 2010

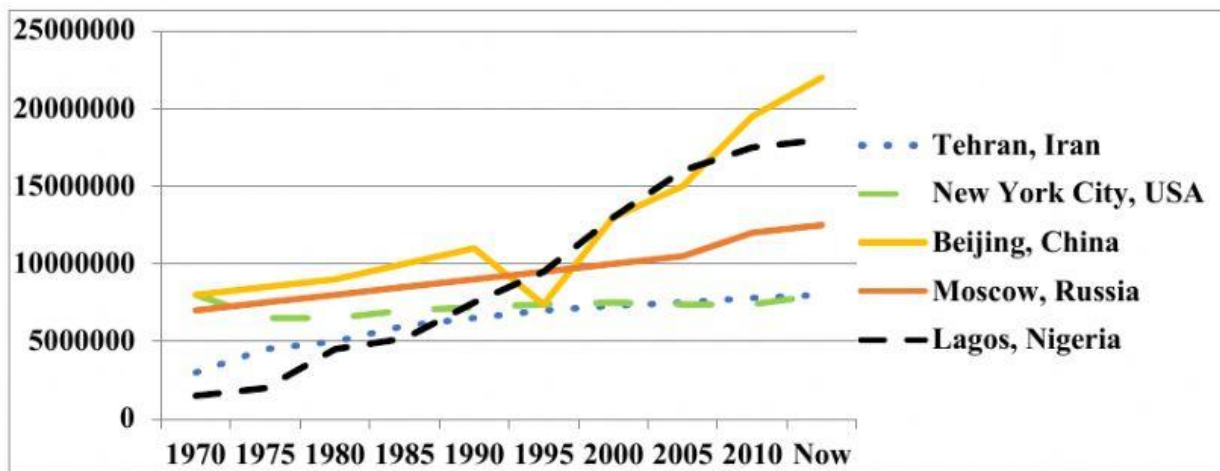


## IELTS FOUNDATION 2

- This chart compares the ages of the population of Ireland at the same point in time.
- This chart compares the ages of the population of Ireland over a period of time.

**Exercise 2. Look at the graph. Then choose the correct answers to complete the statements.**

### The population of five different cities



1. The population of Lagos increased by just under 4 million between 1970 and 1980. / decreased by just over 8 million between 1970 and 1980. / stayed about the same between 1970 and 1980.
2. The population of New York City increased by just over 2 million between 1970 and 1980. / decreased by about 1 million between 1970 and 1980. / stayed about the same between 1970 and 1980.
3. The population of Moscow increased by about 2 million between 1990 and 2000. / decreased by about 2 million between 1990 and 2000. / stayed about the same between 1990 and 2000.
4. The population of New York City increased by about 6 million between 1990 and 2010. / decreased by about 2 million between 1990 and 2010. / stayed about the same between 1990 and 2010.
5. The population of Tehran has increased by about 5 million between 1970 and now. / has decreased by about 2 million between 1970 and now. / has stayed about the same between 1970 and now.

**Exercise 3. Look at the graph again. Choose the correct verb forms to complete the sentences.**

The population of Moscow increased/has increased by about 2 million between 1990 and 2000.

## IELTS FOUNDATION 2

The population of Tehran increased/has increased by approximately 5 million between 1970 and the present time.

Between 1975 and 1980 the number of people living in Lagos rose/has risen by nearly 3 million.

The population of Beijing at the present time is/has been about 22 million.

**Exercise 4. Put the words in the correct columns to complete the table.**

<i>drop</i>	<i>decrease</i>	<i>stay</i>	<i>the same</i>	<i>fall</i>
<i>rise</i>	<i>increase</i>	<i>grown</i>	<i>remain</i>	

go up	go down	no change

**Exercise 5. Look at the graph again and read the student's report. Then complete the report with the correct form of the verbs in brackets.**

The line graph compares the number of people living in five cities in the world between 1970 and the present.

On the whole, the population of these cities (grow) a lot since 1970. The number of residents in Lagos and Beijing (rise) the most, while the number in Moscow and Tehran (increase) too.

In Lagos, the number of residents (rise) from about 1 million in 1970 to 2 million 1975, but since then the population (grow) quickly from 2 million in 1975 to 18 million at the present time. Similarly, the number of people living in Beijing also (increase) from 8 million in 1970 to just under 20 million in 2010.

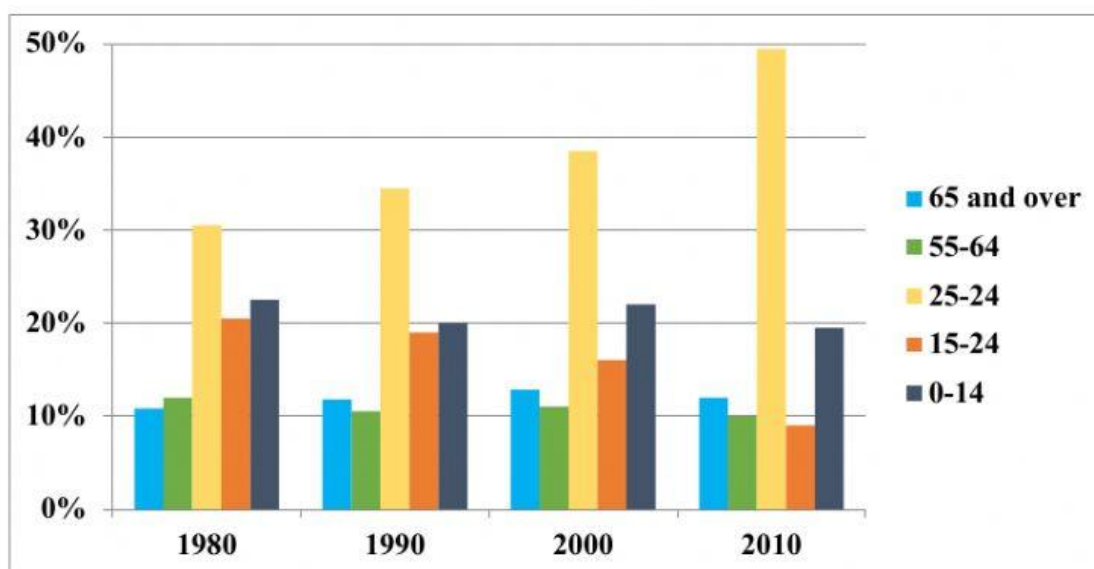
By contrast, the population of New York City (stay) the same since 1970. During the 1970s it fell (fall) from 8 million to about 6.5 million. The number of residents then (remain) at about 7.5 million between 2000 and 2010, and since then it (grow) slowly to around 8 million people at the present time.



## IELTS FOUNDATION 2

Exercise 6. Choose the correct prepositions to complete the student's report.

The age of the population of Ireland between 1980 and 2010



The bar chart compares the different ages of people living in Ireland between 1980 and 2010.

All in all, the size of the 25–54 age group increased the most about/over the period while the size of the two younger age groups decreased a little bit. The number of people in/to the two older age groups stayed about the same.

The 25–54 age group grew from/over approximately a third of the population in 1980 to nearly half of the population in 2010. By contrast, the 0–14 age group fell from/in just over 25% in 1980 from/to just under 20% in 2010. Similarly, the 15–24 age group dropped from just over 20% of the population in 1980 to just over/under 10% of the population in 2010.

The older two age groups did not increase or decrease much. The size of the 65 and over age group remained at/in about 12%, whereas the size of the 55–64 age group only fell from/under about 12% at/to about 10% of the population.

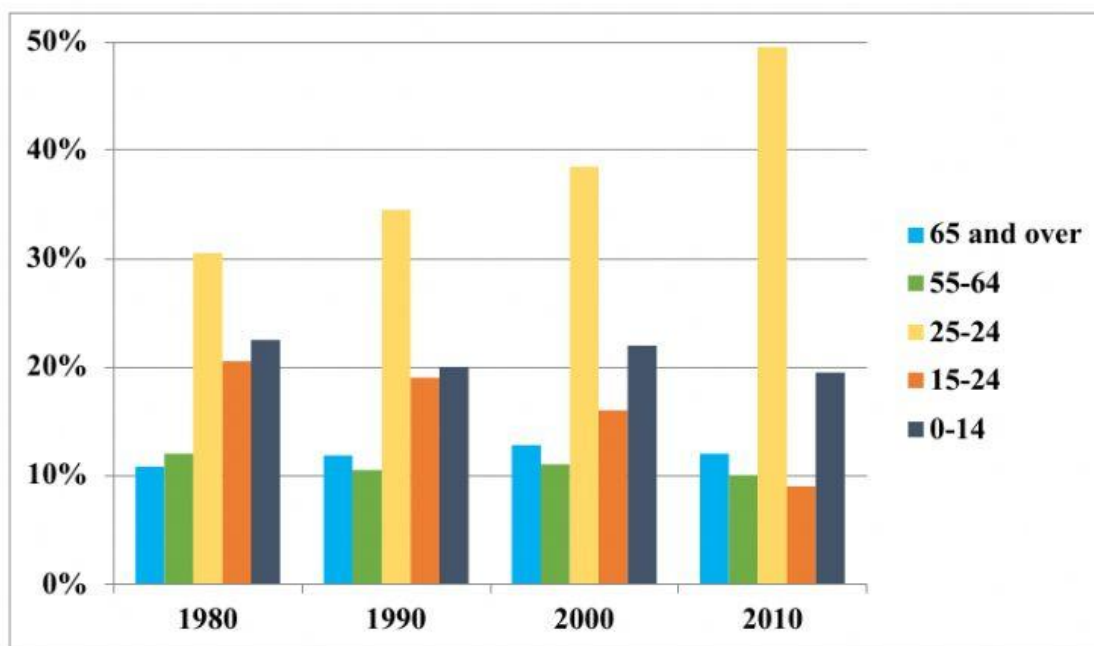
Exercise 7. Read the information. Then look at the graph. Put the paragraphs in the correct order to complete the report.

The report should have:

- An introduction that includes 2 or 3 main features of the chart.
- Two paragraphs that provide details of the main features mentioned in the introduction. (The main features are the most important pieces of information on the chart.)

## IELTS FOUNDATION 2

### The age of the population of Ireland between 1980 and 2010



The bar chart compares the different ages of people living in Ireland between 1980 and 2010.

The 25 - 54 age group grew from approximately a third of the population in 1980 to nearly half of the population in 2010.

The older two age groups did not increase or decrease much. The size of the 65 and over age group remained at about 12%, whereas the size of the 55- 64 age group only fell from about 12% to about 10% of the population.

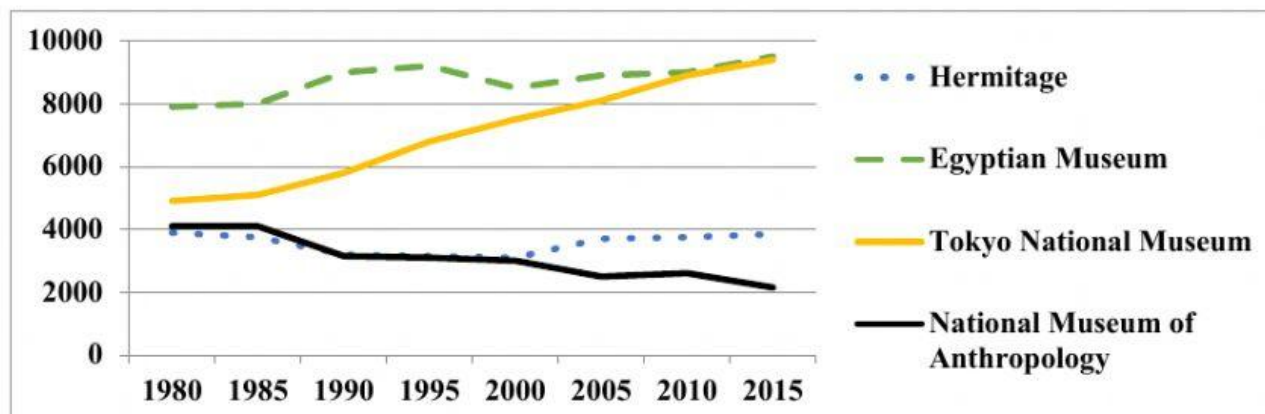
By contrast, the 0 -14 age group fell from just over 25% in 1980 to just under 20% in 2010. Similarly, the 15-24 age group dropped from just over 20% of the population in 1980 to just under 10% of the population in 2010.

All in all, the size of the 25-54 age group increased the most over the period while the size of the two younger age groups decreased a little bit. The number of people in two older age groups stayed about the same.

## IELTS FOUNDATION 2

Exercise 8. Look at the line graph. Then complete the statements with the phrases in the box.

Museum visitors



between 1980 and 1985.

each had more than 9 million visitors in 2015.

from just over 4 million in 1980 to around 2 million in 2015.

from just under 4 million in 1980 to just over 3 million in 2000.

from just under 5 million in 1980 to around 9 million in 2015.

over the thirty-five-year period.

with between approximately 8 and 9 million visitors each year.

with no more than 4 million visitors each year.

1. The Egyptian Museum was the most popular.

2. the number of visitors to the Hermitage stayed about the same

3. The Egyptian Museum and the Tokyo National Museum

4. The number of visitors to Hermitage fell

5. The number of visitors to the National Museum of Anthropology stayed the same

## IELTS FOUNDATION 2

6. The number of visitors to the Tokyo National Museum increased

---

7. The least popular were the Hermitage and the National Museum of Anthropology,

---

8. The visitors to the National Museum of Anthropology decreased slowly

---

**Exercise 9. WRITING TASK 1** You should spend about 20 minutes on this task.

*The graph shows the number of visitors to four international museums between 1980 and 2015.*

*Summarise the graph by selecting and reporting the main features and make comparisons where relevant.*

Write at least 150 words.

**Museum visitors**

