

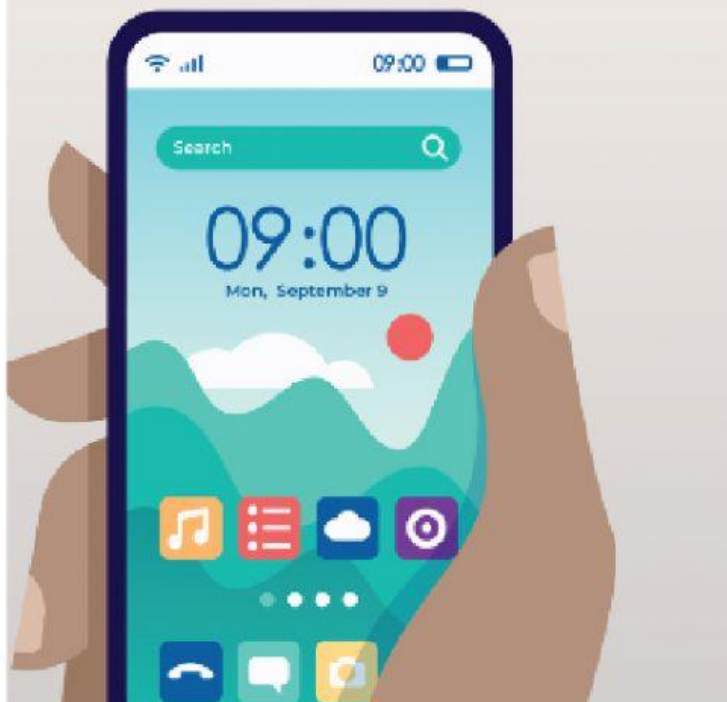
READ THE TEXT AND COMPLETE THE ACTIVITIES:

How we use our phones

There are about 8 billion people in the world, and about 5 billion of us have a mobile device. More than half of these devices are smartphones.

IBM produced the first smartphone in 1992. It included email, a calendar, and an address book. But the battery life was very short—about one hour—and IBM only sold 50,000 phones. The BlackBerry Digital Assistant arrived on the market in 1999. It quickly became popular, and in 2011, BlackBerry sold more than 50 million devices. In 2007, the Apple iPhone became available. The first Samsung Galaxy followed in 2010; battery life improved, prices went down, and then everybody wanted a smartphone.

Why are these personal electronic devices so popular? How do we use them? The infographic on the right shows why so many people feel lost without their phone.



A day in the life of a smartphone

IN THE MORNING



32% wake up and check their smartphone within five minutes



29% wake up and check text messages first

AT WORK



32% make work calls using a smartphone



37% send work emails using a smartphone

IN THE EVENING



9% pay for public transportation using their smartphone



80% use their smartphone while talking to friends



68% use their smartphone while having dinner with family



81% use their smartphone while watching TV



9% pay for taxis using their smartphone

AT NIGHT



27% check their smartphone five minutes before going to sleep



34% check their smartphone in the middle of the night

WHICH SENTENCE DESCRIBES THE INFOGRAPHIC BEST?

- a) It describes different types of smartphones and explains which phones work better for doing certain tasks.
- b) It gives information about what people do with their smartphones and when they do it.
- c) It shows how many people in the world are using a smartphone at certain times and how long they use it for.

SCAN THE ARTICLE AND INFOGRAPHIC TO COMPLETE SENTENCES 1- 5 BELOW

- 1.- In 1992, IBM produced the first _____ .
- 2.- Black Berry sold more than _____ devices in 2011.
- 3.- The same number of people use a smartphone to pay for _____ and for public transportation.
- 4.- The same number of people use their smartphone to make work calls and check their smartphone within five minutes of _____ .
- 5.- About the same number of people use their smartphone while watching TV and while talking to _____ .

CHECK TWO CONCLUSIONS FROM A -D THAT WE CAN DRAW FROM THE ARTICLE AND INFOGRAPHIC

- a) Smartphones cause a lot of problems and are not safe to use while driving.
- b) A smartphone is an important tool with many uses.
- c) Smartphones are useful both for work and in personal life.
- d) The price of smartphones is too high.