

# REPRODUCTIVE SYSTEM EXAM

Name: ..... Class: ..... Date: .....

## 1. Tick the correct sentences:

- ☐ People have asexual reproduction.
- ☐ Humans are viviparous.
- ☐ Babies develop in their mother's vagina.
- ☐ People are born with their sexual organs.
- ☐ There are also physical changes during puberty.
- ☐ These changes are the same for men and women.
- ☐ Birth is the process by which a baby is born.
- ☐ At about nine months, the baby is ready to be born.

## 2. Write W for woman's changes or M for man's changes during puberty.

- |   |  |
|---|--|
| <input type="checkbox"/> They have a lower voice. | <input type="checkbox"/> They develop an Adam's apple. |
| <input type="checkbox"/> They have wider hips.    | <input type="checkbox"/> They have a higher voice.     |
| <input type="checkbox"/> They develop breasts.    | <input type="checkbox"/> They develop facial hair.     |

## 3. Drop the name of each part in the correct place.

uterus

testes

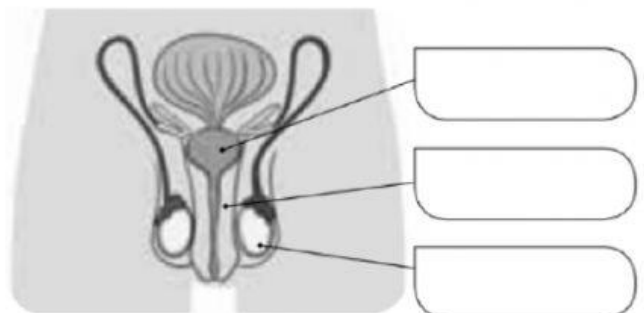
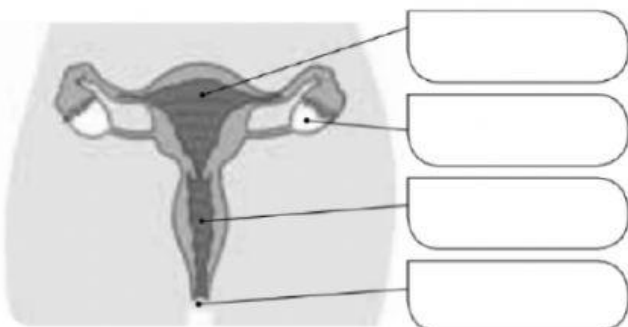
penis

vagina

ovaries

prostate gland

vulva



**4. Complete the sentences with the following words:**

penis      contract      vagina      oxygen      vulva      waste substances      testes  
uterus      ovaries      nutrients      prostate gland      push      navel      umbilical cord

The female reproductive system is made up of an external organ, the ....., and several internal organs, such as the ....., the ..... and the .....

The male reproductive system is made up of external organs, such as the ..... and the ....., and a few internal organs, such as the .....

The baby is connected to the mother by the ..... Through this tube, the baby receives ..... and ....., and it also expels .....

The muscles of the mother's uterus ..... and ..... the baby out. The scar that remains on the baby becomes the .....