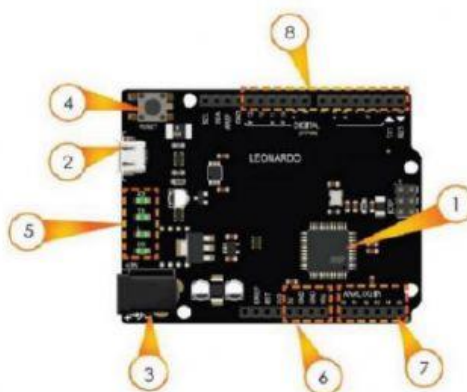


Look at the Arduino board shown below, match each number with its function.



analogIN sockets

power sockets

USB jack

LEDs set

reset button

microcontroller

digital sockets

power jack

No.	Name	Function
1		<ul style="list-style-type: none"> <li>acts as the brain of the Arduino board</li> </ul>
2		<ul style="list-style-type: none"> <li>where the USB cable connects the Arduino board to the computer</li> <li>similar to the USB port on your phone</li> </ul>
3		<ul style="list-style-type: none"> <li>an external power supply port</li> </ul>
4		<ul style="list-style-type: none"> <li>reboots the Arduino board, which resets the program you are running</li> </ul>
5		<ul style="list-style-type: none"> <li>has four light indicators:               <ul style="list-style-type: none"> <li>Rx</li> <li>Tx</li> <li>L</li> <li>ON</li> </ul> </li> </ul>
6		<ul style="list-style-type: none"> <li>contains four power pins</li> </ul> <div style="text-align: center;"> <p>3.3V pin: a node with a 3.3V power supply</p> <p>5V pin: a node with a 5V power supply</p> <p>GND pins: a grounded pin (0V); the power socket has three GND pins</p> <p>VIN pins: a pin used to power the Arduino board using an external DC source (for example, a battery)</p> </div>
7		<ul style="list-style-type: none"> <li>allows you to access Arduino's analogue pins</li> <li>used to read analogue signals from different sensors</li> </ul>
8		<ul style="list-style-type: none"> <li>allows you to access Arduino's digital pins</li> </ul>