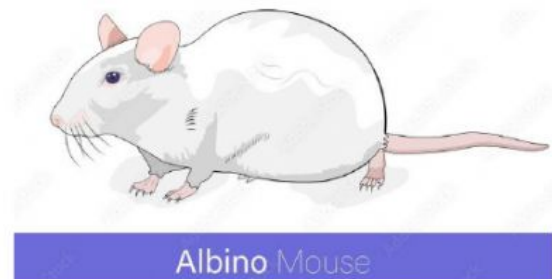


Pedigrees Practice - Human Genetic Disorders

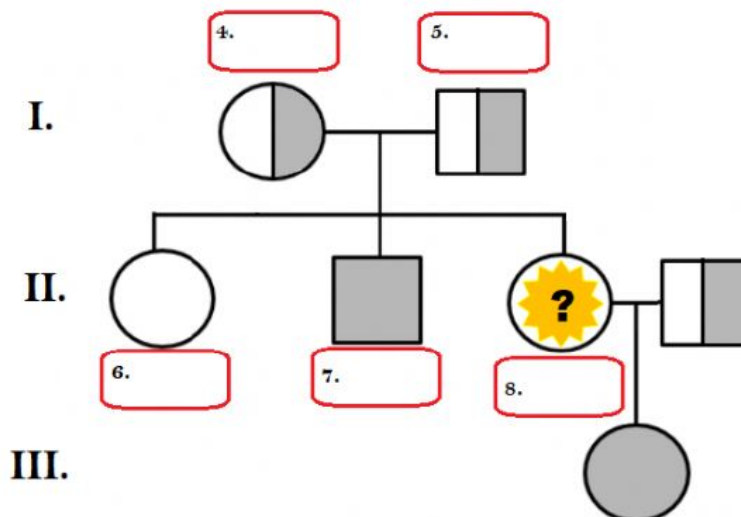
In humans, albinism is a recessive trait. The disorder causes a lack of pigment in the skin and hair, making an albino appear very pale with white hair and pale blue eyes. This disorder can also occur in animals, a common albino found in a laboratory is the white rat. The pedigrees below trace the inheritance of the allele that causes albinism.



Given the following genotypes, type the phenotype (*normal*, *carrier*, or *albino*) in the box.

AA	1.
Aa	2.
aa	3.

Fill out the blanks on the pedigree



9. How many children does the couple in generation I. have?
10. What is the sex of the oldest child in generation II.?
11. How many grandchildren does the couple have?

What would the possible offspring of a cross between a mouse that is **aa** and **Aa** be? Type the

	a	a
A	12.	13.
a	14.	15.