

Vocabulary

• Animals

1 Label the pictures.

1 _ _ r _ _



6 _ _ _ k _ _



2 p _ _ _ _ _



7 t _ _ _ _ _



3 _ _ z _ _ _ _



8 _ _ x



4 _ _ _ f



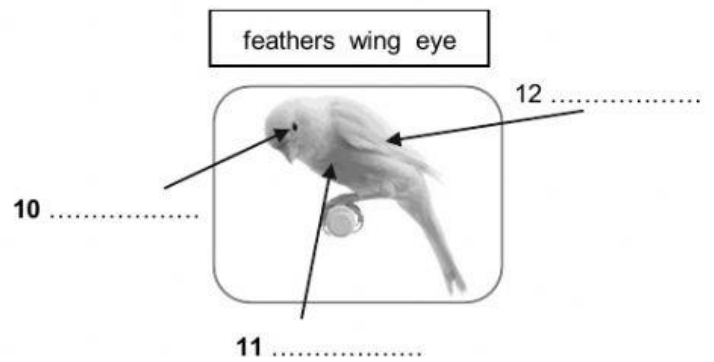
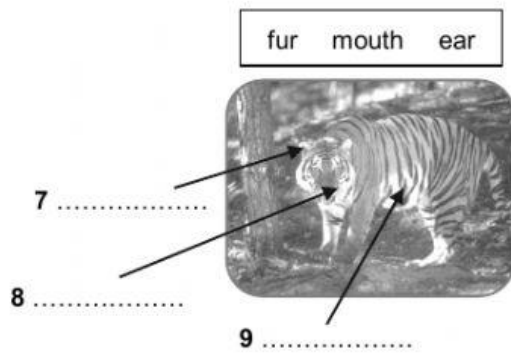
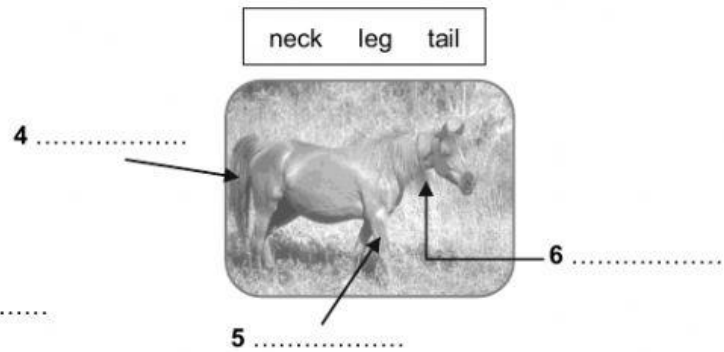
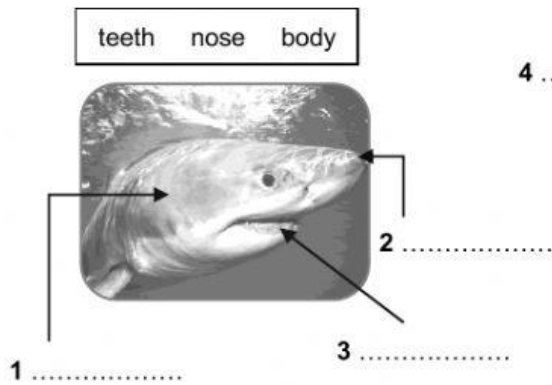
9 _ _ _ _ _ o _



5 w _ _ _



2 Label the body parts.



3 Underline the correct item.

- | | |
|---|--|
| <p>1 Sharks hunt/feed on fish and seals.</p> <p>2 All birds hatch/lay eggs.</p> <p>3 Dogs use their sharp teeth to chew/digest meat.</p> | <p>4 Most insects don't weigh/fly very much.</p> <p>5 Don't be scared of the cat. It won't harm/injure you.</p> <p>6 Do you care/protect about the environment?</p> |
|---|--|

• Environment

- 4 Fill in the correct adjective:** *easy, sharp, friendly, inexpensive, large, dangerous, small, endangered, thick, pointed.*

Pets in the Wild: Adopt a Killer Whale with WWF!



Despite its deadly name, the killer whale isn't as **1)** as you might think. In fact, killer whales often behave in a(n) **2)** and protective way towards humans. This **3)** sea mammal, a member of the dolphin family, grows up to ten metres long and weighs up to 10,000 kg. It has a black and white body, a(n) **4)** nose and **5)** eyes. Because it eats meat, the killer whale has lots of **6)** teeth and like other whales, it has **7)** skin to keep it warm. Sadly, though, whale hunting means that the killer whale is (an) **8)** species in some parts of the world. That's why WWF needs your help! Adopting a killer whale is a(n) **9)** way to protect this beautiful creature. And, at only \$10 a month, it's **10)**, too. Please apply online today!

• General Revision

5 Choose the correct item.

- | | |
|---|---|
| <p>1 Could you carry / bring me the cat food, please?</p> <p>2 My dog gave / lay birth to three puppies last night.</p> <p>3 The Galapagos Tortoise can reach / last the age of 180 years old before it dies.</p> <p>4 Lions appear / rest during the day and hunt during night.</p> <p>5 Please, repeat / whisper what you said. I can't hear you.</p> | <p>6 Dinosaurs died / disappeared from the Earth 65 million years ago.</p> <p>7 The wildlife organization works to escape / save elephants from poachers.</p> <p>8 Some animals attack / protect humans when they feel threatened.</p> <p>9 An omnivore's diet adds / includes plants and animals.</p> <p>10 Polar bears hunt alone once they turn / break into adults.</p> |
|---|---|

6 Match the opposites.

- | | | |
|----------------------------|-----------|------------|
| 1 <input type="checkbox"/> | dangerous | A slow |
| 2 <input type="checkbox"/> | thick | B weak |
| 3 <input type="checkbox"/> | sharp | C slow |
| 4 <input type="checkbox"/> | heavy | D harmless |
| 5 <input type="checkbox"/> | fast | E tiny |
| 6 <input type="checkbox"/> | strong | F light |
| 7 <input type="checkbox"/> | fast | G blunt |
| 8 <input type="checkbox"/> | huge | H thin |

Grammar in use


7 Write the past form of the following irregular verbs.

- | | | | |
|---------|-------|---------|-------|
| 1 fly | | 6 give | |
| 2 see | | 7 tell | |
| 3 come | | 8 think | |
| 4 break | | 9 leave | |
| 5 buy | | 10 make | |

8 Complete the sentences with the *past simple* of the verbs in brackets.

- 1 A: (you/have) a pet when you were younger?
B: No, (do/not). But I (want) one!
- 2 A: What (you/do) last weekend?
B: I (go) swimming with my sister.
- 3 A: (you/see) lions at the zoo?
B: I (not/see) any lions but, I (see) a tiger.
- 4 A: (you/get) a new dog?
B: Yes! This is Spike, we (get) him last week.
- 5 A: Why (you/not/take) the dog for a walk?
B: I (feel) sick and (go) to lie down.
- 6 A: The cat (drink) the milk quickly!
B: She (eat) all her food, too!

9 Put the verbs in brackets into the *past simple*.



profile photo gallery contact SEARCH

Captain's Blog

Hello readers!

This weekend I 1) (take) a trip to London Zoo. It 2) (be) an amazing experience! First of all, I 3) (go) to Penguin Beach to see the penguins. I 4) (see) ten penguins and one of them 5) (swim) right past me! Unfortunately, I 6) (not/see) the new tigers at the zoo but I 7) (feed) the giraffes and the monkeys! They 8) (be) so friendly and gentle! Then, I 9) (eat) lunch at the zoo's café and 10) (spend) the afternoon watching the dolphin show.

I really 11) (have) a great time at London Zoo! What 12) (you/do) this weekend, readers? Leave your comments below!

Captain

10 Put the adjectives in brackets into the comparative or the superlative form.

- | | |
|--|--|
| <p>1 The gazelle is one of the (fast) land animals.</p> <p>2 A giraffe is (tall) than a horse.</p> <p>3 A lion's tail is (long) than a cat's tail.</p> <p>4 A fox is (big) than a rabbit.</p> <p>5 The great white shark is one of the (dangerous) animals in the world.</p> | <p>6 I think canaries are the (good) pets for children.</p> <p>7 A polar bear is (aggressive) than a koala bear.</p> <p>8 Parrots are (funny) birds than canaries.</p> |
|--|--|

11 Complete the sentences with adverbs formed from the words in brackets.

- | | |
|---|---|
| <p>1 The dog ran really (fast) to fetch his ball.</p> <p>2 The dolphins jumped (graceful) through the waves.</p> <p>3 Our rabbits slept (peaceful) in their new cage.</p> | <p>4 The cat rolled over (lazy) and stretched its legs.</p> <p>5 We turned the boat around (careful) to see the dolphins.</p> <p>6 The rescue dogs (brave) made their way through the snow.</p> |
|---|---|

• Prepositions**12 Choose the correct item.**

- | | |
|---|---|
| <p>1 Blue whales can live about 80 years.
A for B in C at</p> <p>2 Mammals feed their babies their own milk.
A in B with C on</p> <p>3 Emperor Penguins live Antarctica.
A on B at C in</p> <p>4 Adult giraffes are 5 metres tall.
A about B under C at</p> | <p>5 Wolves hunt their food at night.
A of B for C about</p> <p>6 Help! The house is fire. Call the fire brigade.
A on B in C under</p> <p>7 Tom loves to play his pet hamster.
A along B up C with</p> <p>8 Most dinosaurs lived land.
A in B on C above</p> |
|---|---|

Everyday English**13 Choose the correct response.**

- 1 A: My dog ran away last night.
B:
a How awful!
b Don't tell me!
- 2 A: The cat is sick.
B:
a I'm not surprised!
b That's a shame.
- 3 A: We saw a baby panda being born at the zoo!
B:
a That's shocking!
b I don't believe it!

- 4 A: A dog chased my brother yesterday!
B:
a Oh my goodness!
b Look out!
- 5 A: The Smiths' pet cat got stuck up a tree.
B:
a What did they do?
b Are they ok?

Reading**14 Read the text. Which of the prehistoric mammals (A, B or C):**

- | | |
|------------------------------|---------------------------------------|
| 1 ate only plant life? | 5 had long teeth? |
| 2 was a hunter? | 6 had sharp claws? |
| 3 had a long nose? | 7 was hairier than an elephant? |
| 4 had a thick tail? | |

Prehistoric Mammals

Dinosaurs were not the only animals to roam the earth millions of years ago. Let's take a look at some of the world's oldest mammals.

A Smilodon

Smilodons were prehistoric big cats. They were about the same size as a tiger but they had two huge front teeth. These sharp teeth were used for killing prey. Smilodons were predators that fed on large plant-eaters like camels and bison. Scientists believe that when these large animals died out, the smilodons died out too.

B Megalonyx

Megalonyx was a giant ground sloth that lived in prehistoric times. On average, they were three metres tall and weighed a ton. Megalonyx mainly ate plants but scientists think that they also occasionally ate meat. They stood on their back legs and balanced themselves with their thick tail to reach high into the trees. They cut their food from the trees using their sharp claws.

C Mammoth

Mammoths were huge prehistoric mammals that looked similar to elephants. Like elephants, they were herbivores and they had long trunks. However, unlike elephants, mammoths had thick hair to protect them from the cold. The average mammoth weighed over eight tons and was four metres tall.