

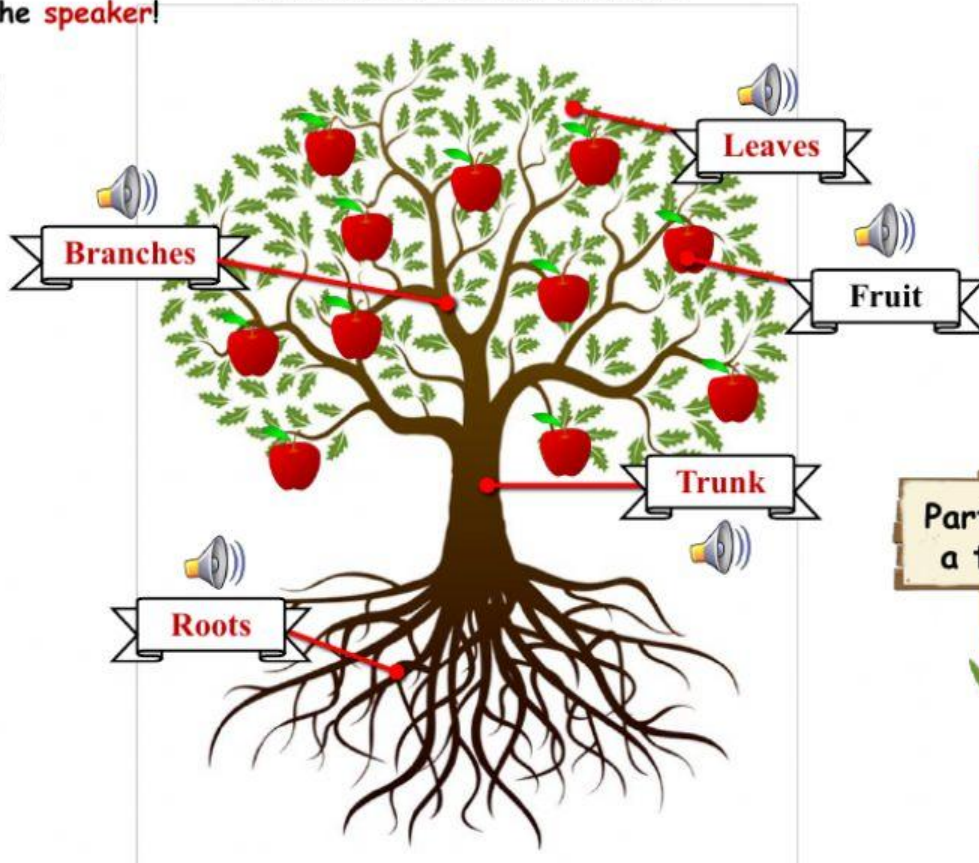
Deciduous and evergreen trees

The trees are **tall**. They have a **thick** and **hard stem** called **trunk**. They have **also roots** and **branches** and **some of them** have flowers and fruits.



Let's use
the **speaker**!

PARTS OF A TREE

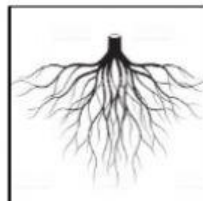
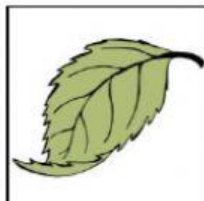
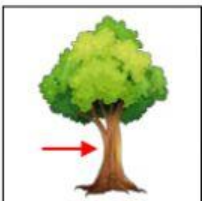


Click on the book
for terminology



Let's practise!

1 Listen and write the correct part of a tree.



Deciduous and evergreen trees

There are two kind of trees: **deciduous** and **evergreen** trees.



Deciduous



They **change** their leaves in **autumm**.



Evergreen



They are green **all year round**.

2 Look at the pictures and write **deciduous** or **evergreen**.



3 Complete the sentences.

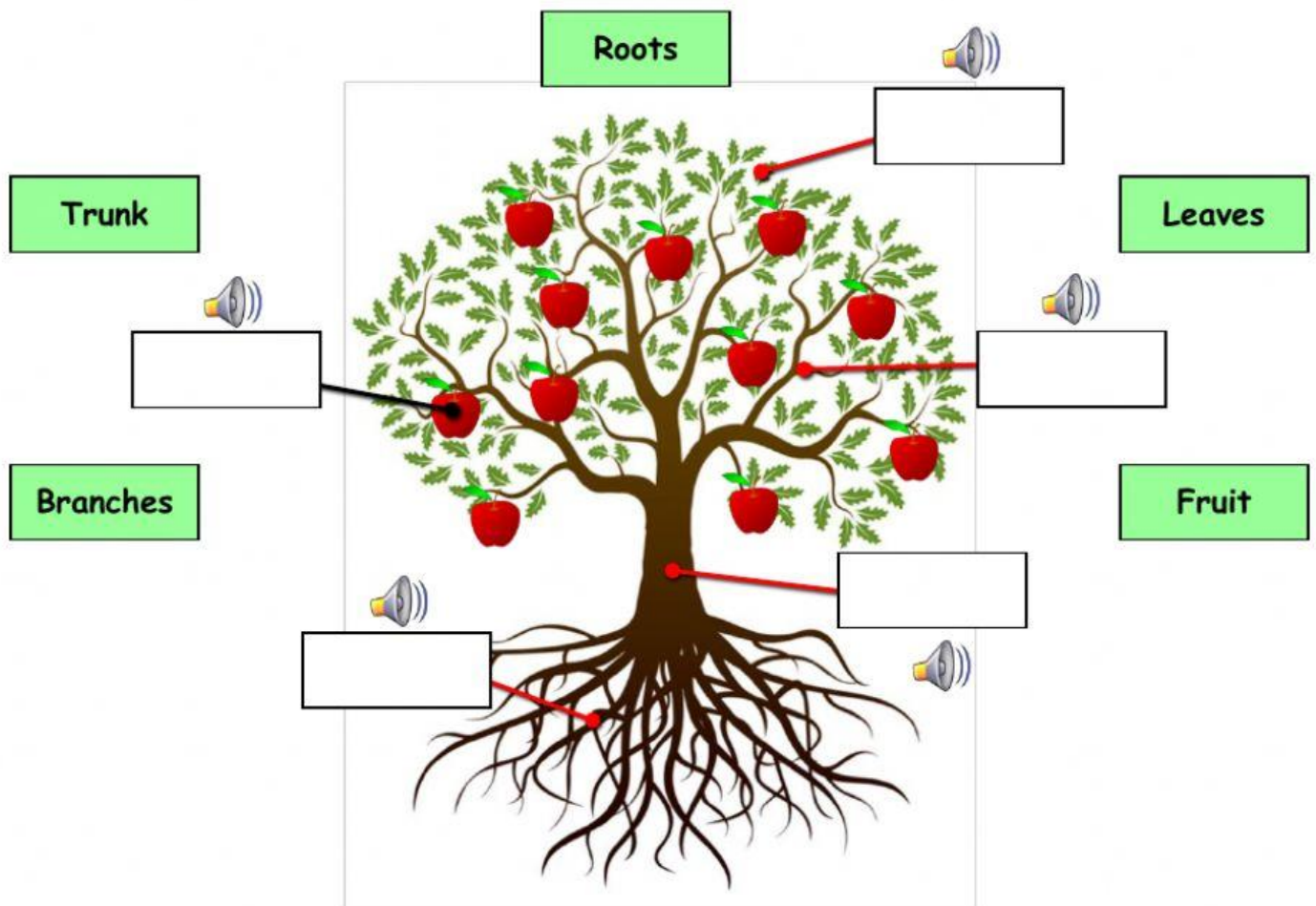
trees are **green** all year round.



trees **change** their leaves in autumm.



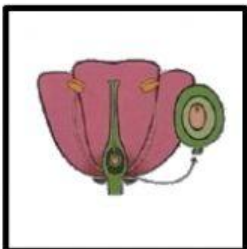
- 4 Listen to the **speaker** and drag and drop (*arrastra y une*) the different parts of the tree.



Flowers and seeds

Some plants have flowers. The flowers **make seeds** and **these** seeds germinate in new plants. Some flowers **turn into** fruits and the fruit **contains** seeds. **Let's** see the comic.

1



The flower
make seeds.



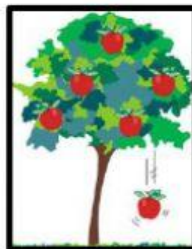
2



The flowers
turn into fruits.



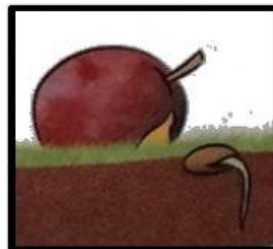
3



The fruit **falls**
to the **ground**.



4



Fruit contains
seeds.



5



A new plant
grows from the
seeds.

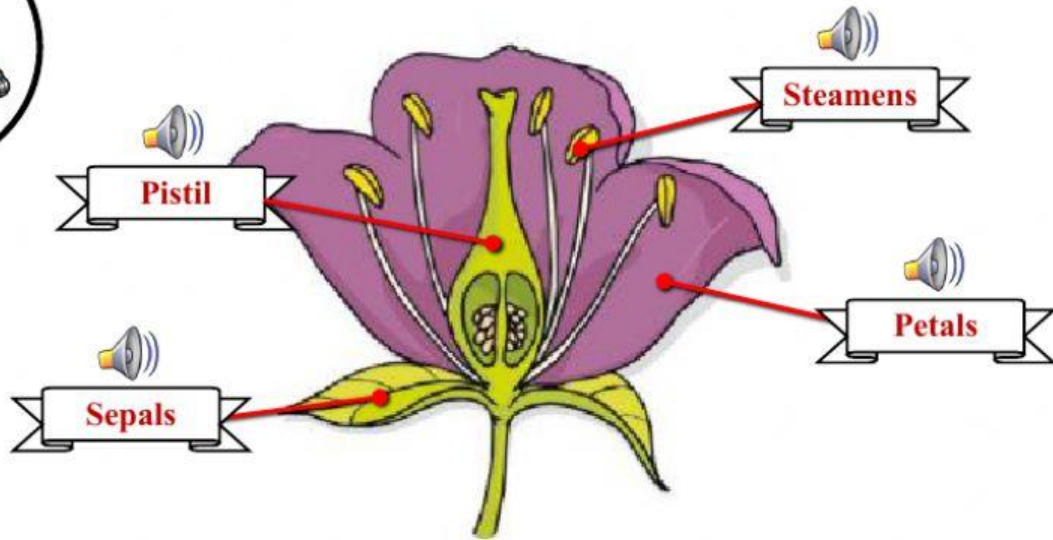


Flowers and seeds



Let's use
the **speaker!**

PARTS OF A FLOWER



5 Drag and drop (*arrastra y suelta*) in the correct order.

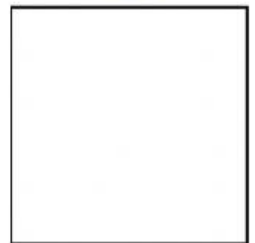
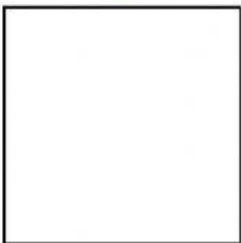
1

2

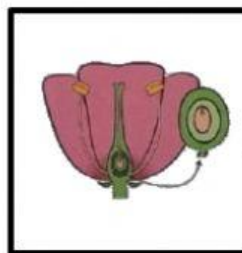
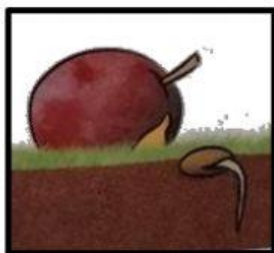
3

4

5



The fruit **falls**
to the **ground**.



Fruit contains
seeds.

The flower
make seeds.

A new plant
grows from
the **seeds**.

The flowers
turn into fruits.

6 Complete the **wordsearch**.



Evergreen

Leaves

Trunk

Roots

Branches

Pistil

Sepal

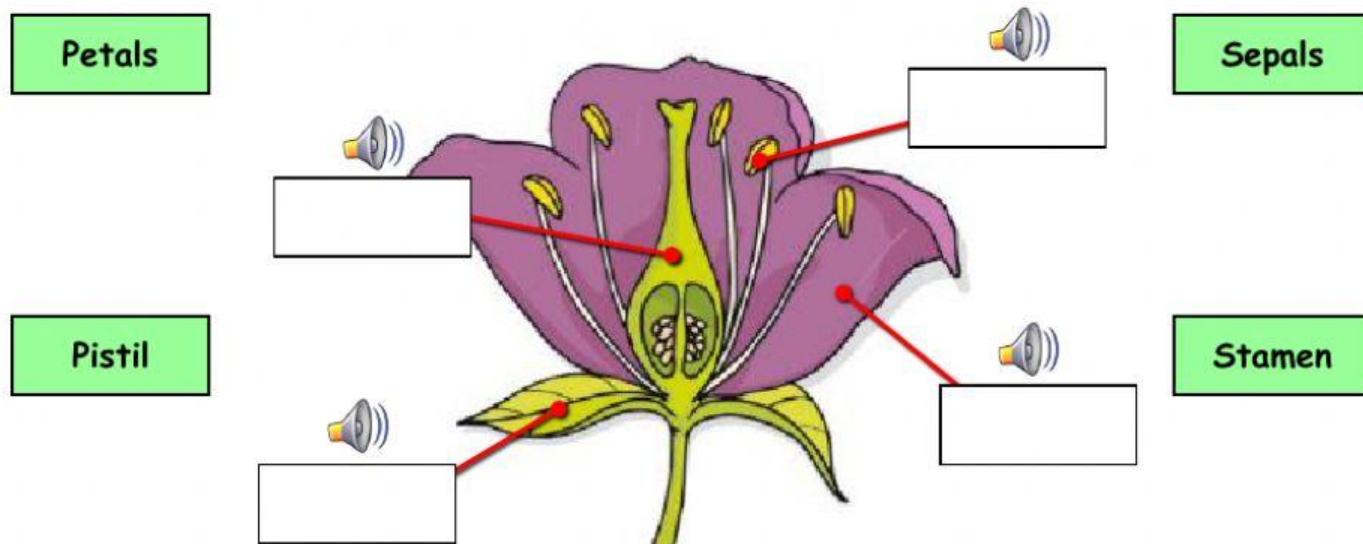
Stamen

Petals

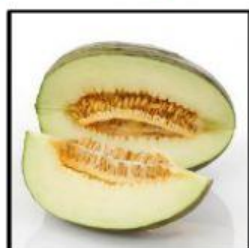
Deciduous

Flower

7 Listen to the **speaker** and drag and drop (*arrastra y une*) the different parts of a flower.



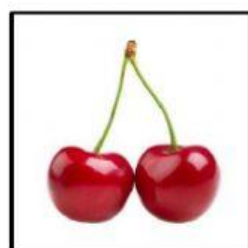
8 How many seeds do **these** fruits have? Select it!



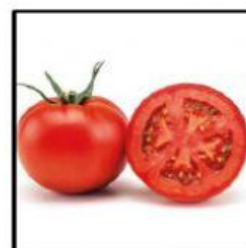
One / Many



One / Many



One / Many



One / Many

Non-flowering plants

Some plants don't have flowers, they are **non-flowering plants**. **Mosses** and **ferns** don't have flowers and they **can't make** seeds. They reproduce with **spores**.



Mosses



They are **short** and **soft**.



Ferns



They have **big** and **green** leaves.

9 Tick the non-flowering plants.

☐☐☐☐☐☐

10 Write *moss* or *fern*.



11 Complete the sentences.

evergreen	petals	water	leaves	ferns
spores	trunk	seeds	deciduous	fruit

Plants need _____, air, sunlight and **soil** to **grow well**.

Plants have roots, stem, _____ and flowers.

Trees have a **thick, hard** stem **called** _____. They have roots and branches. _____ trees **change** their leaves in autumn. _____ trees are green **all year round**.

Some plants have flowers. Flowers have _____, sepals, stamens and a pistil. Some flowers **turn into** _____. The fruit **has** _____.

Mosses and _____ don't have flowers. They reproduce with _____.

12 **How** they reproduce? Match! (**une**).



Seeds



Spores



13 Write the names of **these** fruits correctly.



Apple



Watermelon



Pear



Orange



Cherry



Strawberry

