



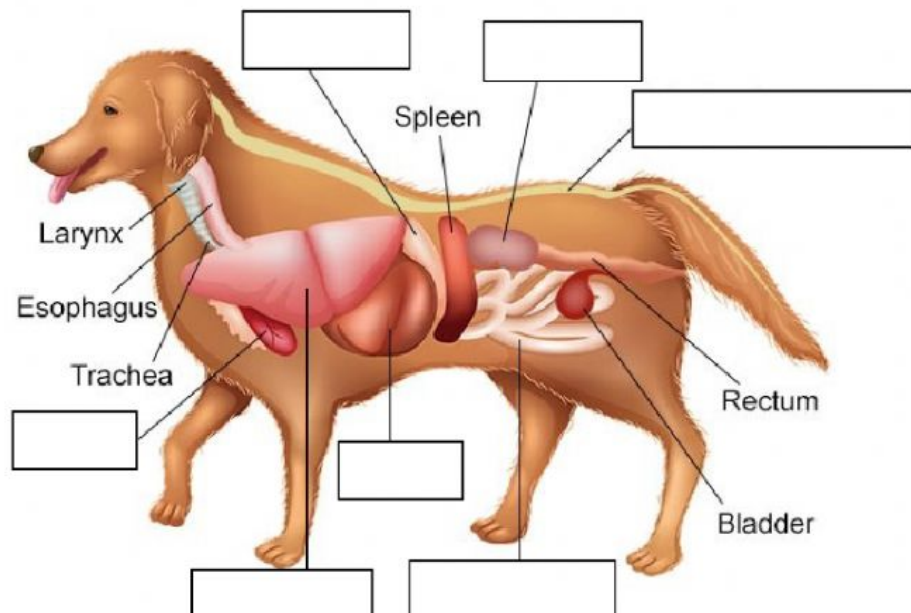
19.– Complete this chart about mammals:

Habitat	Body shape	Body systems	Food	Reproduction	Examples
		Circulatory:			Mammals: Terrestrial: Aquatic: Can fly:
	Limbs:	Respiratory:			

20.– Look information on your notes, and complete or choose True / False.

- A.– Most of mammals are covered by feathers. T / F
- B.– They are covered by _____
- C.– When they are young they breathe through gills. T / F
- D.– They are herbivore (_____), carnivore (_____) and omnivore (_____).
- E.– They are viviparous with external fertilisation. T / F
- F.– Females have breasts to feed newborns. T / F
- G.– Females develop babies inside their bodies. T / F
- H.– Their body is divided in _____, _____ and _____.
- I.– Mammals can't control their body temperature. T / F
- J.– Most of them live on _____, only a few can fly (_____) and only a few live in water (_____)

21.– Label this picture:



TRANSLATE THESE WORDS:

.– fur:

.– placentals:

.– skin:

.– marsupials:

.– breasts:

.– monotremes: