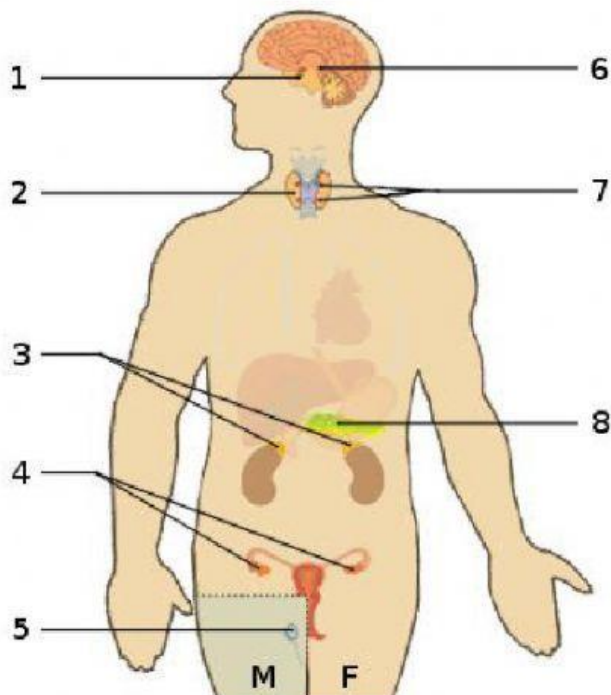


THE ENDOCRINE SYSTEM

Complete the table below by supplying the missing terms. For the name of hormones, choose your answers from Box A; for the name of gland, choose your answers from Box B; and for the location of the gland choose your answers from the illustration below.



BOX A

Melatonin	Calcitonin	Parathormone
Insulin	Glucagon	Thyroxine
Adrenaline	Estrogen	Testosterone
Somatotropin	Luteinizing Hormone	
Follicle-Stimulating Hormone	Vasopressin	
Oxytocin	Prolactin	

BOX B

Pituitary	Testes	Ovary	Adrenal
Pancreas	Parathyroid	Thyroid	Pineal

FUNCTION	NAME OF HORMONE	GLAND WHERE IT IS PRODUCED	LOCATION OF THE GLAND
Controls the development of female secondary sex characteristics.			
Decreases blood calcium			
Stimulates growth			
Prevents water loss			
Helps regulate sleep-wake cycle			
Increases blood calcium			
Increases blood sugar			
Improves reaction to emergencies			
Stimulates the ovaries and testes to produce sex hormones			
Controls development of female secondary sex characteristics			
Stimulates gamete formation			
Decreases blood sugar			