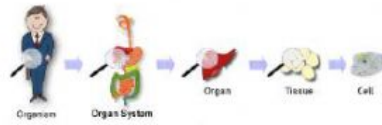




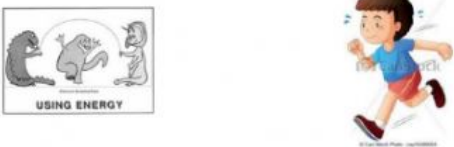


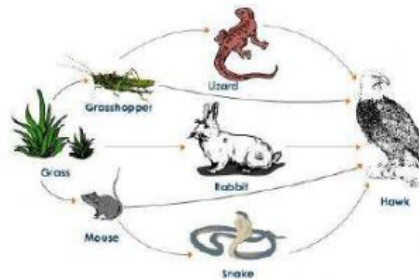
Chapter 7 Study Notes**6 Characteristics of life.** Put the correct word next to the image that it is showing

| | | |
|--|--------------------------------------------------------------------------------------|------------------------|
| |  | Growth and development |
| |  | Homeostasis |
| |  | Use of energy |
| |  | Organization |
| |  | Respond to stimuli |
| |  | Reproduction |

Food Webs show the movement of energy

Based on the food web below, what is an energy source for the:





- Mouse _____ Lizard _____

**SCIENTIST CLASSIFY ORGANISMS INTO DIFFERENT GROUPS.**

The order for the classification of species is:

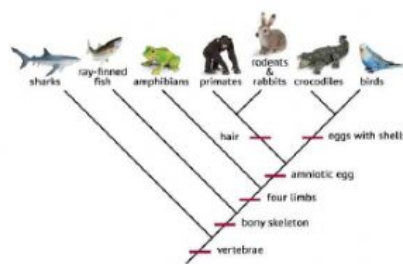
domain, kingdom, phylum, class, order, family, genus, species

There are 6 Kingdoms:

| Domains and Kingdoms  | | | | | | |
|----------------------------------------------------------------------------------------------------------|-------------------------------------------------------------------------------------|-------------------------------------------------------------------------------------|-------------------------------------------------------------------------------------|-------------------------------------------------------------------------------------|--------------------------------------------------------------------------------------|---------------------------------------------------------------------------------------|
| Domain | Bacteria | Archaea | Eukarya | | | |
| Kingdom | Bacteria | Archaea | Protista | Fungi | Plantae | Animalia |
| Example |  |  |  |  |  |  |
| Characteristics | Bacteria are simple unicellular organisms. | Archaea are simple unicellular organisms that often live in extreme environments. | Protists are unicellular and are more complex than bacteria or archaea. | Fungi are unicellular or multicellular and absorb their food. | Plants are multicellular and make their own food. | Animals are multicellular and take in their food. |

To which kingdom does the following organisms belong?





- **What is the name of this tool?** _____

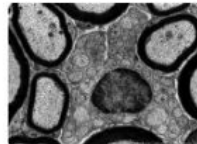
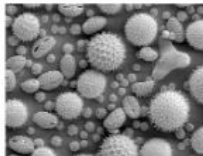
- Name 3 animals that have a bony skeleton

- Name the animal most closely related to the Birds _____

- Which animals do not have four limbs?

- Which is the only animals that have hair?

What type of electron microscope took the following images?



What is the total magnification of an image that is viewed through a:

10X ocular lens and the objective lens is 4X _____

10X ocular lens and the objective lens is 8X _____

10X ocular lens and the objective lens is 10X _____