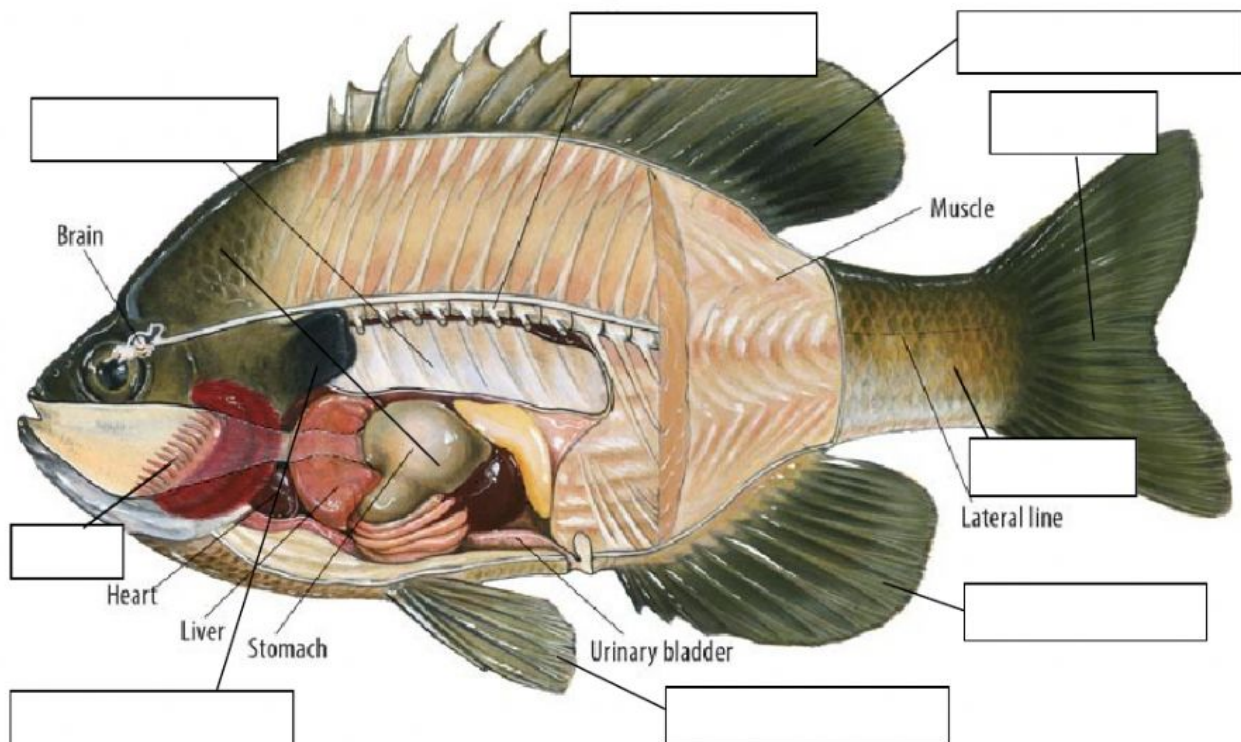




4.- Complete this chart about fish:

Habitat	Body shape	Body systems	Food	Reproduction	Examples
		Circulatory:			Fish:
	Limbs:	Respiratory:			

5.- Write the names in these labels about different organs in fish:



6.- Complete these sentences:

- A.- **FISH** are _____, with _____ to move and covered by _____.
- B.- They have _____ to breath, and they are **blooded**.
- C.- I they eat plants, they are _____. If they eat other fish, they are _____.
- D.- They lay eggs, so they are _____.
- E.- They have an **internal skeleton** formed by bones and a _____.
- F.- Their body is divided into _____, _____ and _____.

7.- TRANSLATE THESE WORDS:

- | | | |
|------------------|----------------|------------------|
| .- aquatic: | .- scales: | .- swim bladder: |
| .- fin: | .- gill: | .- cold blooded: |
| .- caudal fin: | .- pelvic fin: | |
| .- pectoral fin: | .- anal fin:. | - tail: |