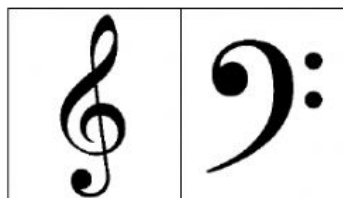
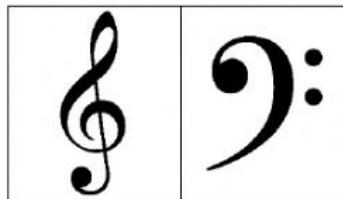


CENTREVILLE PRIMARY SCHOOL
MUSIC
WORKSHEET
TREBLE AND BASS CLEF

LISTEN TO THE CLIP AND SELECT THE CORRECT CLEF.



DRAG ALL THE PICTURES THAT BELONG TO THE TREBLE CLEF TO THE YELLOW BOX. THEN DRAG ALL THE PICTURES THAT BELONG TO THE BASS CLEF TO THE BLUE BOX.



TREBLE CLEF



BASS CLEF

