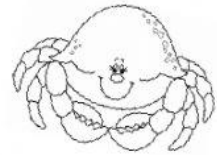


Name: \_\_\_\_\_



Interdisciplinary Unit: Rocky and Sandy Shores



**Instructions:** Drag the words from the box to complete the sentences.

<b>Algae</b>	<b>ecosystems</b>	<b>bones</b>	<b>tides</b>
--------------	-------------------	--------------	--------------

1. Rocky and sandy shores are all \_\_\_\_\_.
2. Many animals living in these environments have to withstand rising \_\_\_\_\_ and other harsh conditions.
3. \_\_\_\_\_ can be found in Rocky shores.
4. Shells and \_\_\_\_\_ are often washed up on sandy shores.

**Instructions:** Read words in the box. Drag them under the correct heading to show where they can be found.

<b>turtle</b>	<b>seaweed</b>	<b>barnacles</b>	<b>starfish</b>	<b>seagulls</b>	<b>whelks</b>	<b>crabs</b>	<b>oysters</b>
---------------	----------------	------------------	-----------------	-----------------	---------------	--------------	----------------

<b>Rocky Shore</b>	<b>Sandy Shore</b>