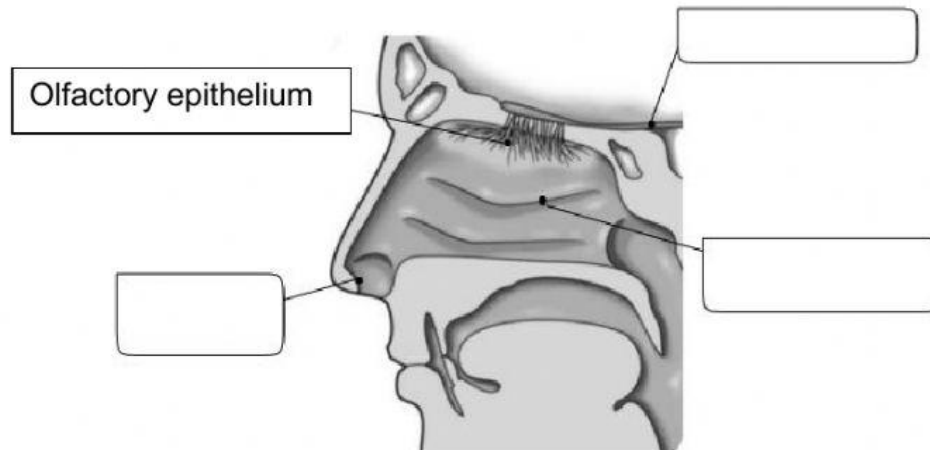


# The sense of smell

A. Label the diagram of the nose. Use some of the words from the box

brain    olfactory bulb    nostrils    nasal cavity    palate    ~~olfactory epithelium~~



B. Complete the sentences with the words from the box

holes    taste    brain    olfactory bulb    nose    smells

4. The sense organ of smell is the \_\_\_\_\_.
5. The sense of smell is closely related to the sense of \_\_\_\_\_.
6. The \_\_\_\_\_ are particles or chemical substances that travel in the air.
7. The \_\_\_\_\_ detects the smell and sends the information to the brain.
8. The nostrils are the two \_\_\_\_\_ at the entrance of the nose.
9. The \_\_\_\_\_ is in charge of recognizing or identifying the smell.

C. Write **T** (true) or **F** (false). **ONLY** capital **T** or **F**

10. We can detect color thanks to our sense of smell. \_\_\_\_\_
11. Our sense of smell can be affected if our nose is blocked. \_\_\_\_\_
12. The African elephant has an extraordinary sense of smell. \_\_\_\_\_
13. Our nose is only useful for sniffing. \_\_\_\_\_
14. Our sense of smell can alert us of a possible danger. \_\_\_\_\_
15. We can only distinguish good or pleasant smells. \_\_\_\_\_