

Name \_\_\_\_\_

Date \_\_\_\_\_

Class period \_\_\_\_\_

Page | 1

### Word Match Activity

Match the following genetic terms to their corresponding parts of the illustration: **base pair**, **cell**, **chromosome**, **DNA (Deoxyribonucleic Acid)**, **double helix\***, **genes**, **nucleus**

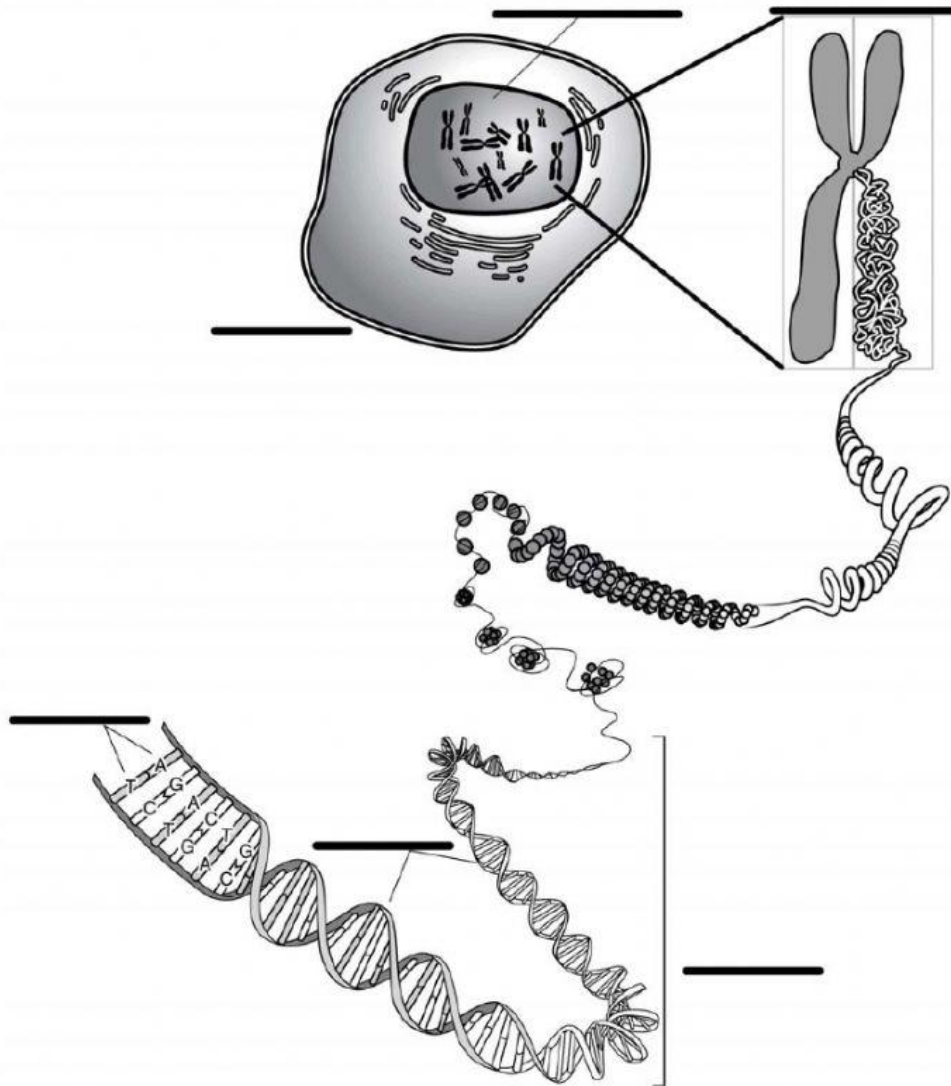


Illustration Source: Talking Glossary of Genetic Terms <http://www.genome.gov/glossary.cfm?key=chromosome>