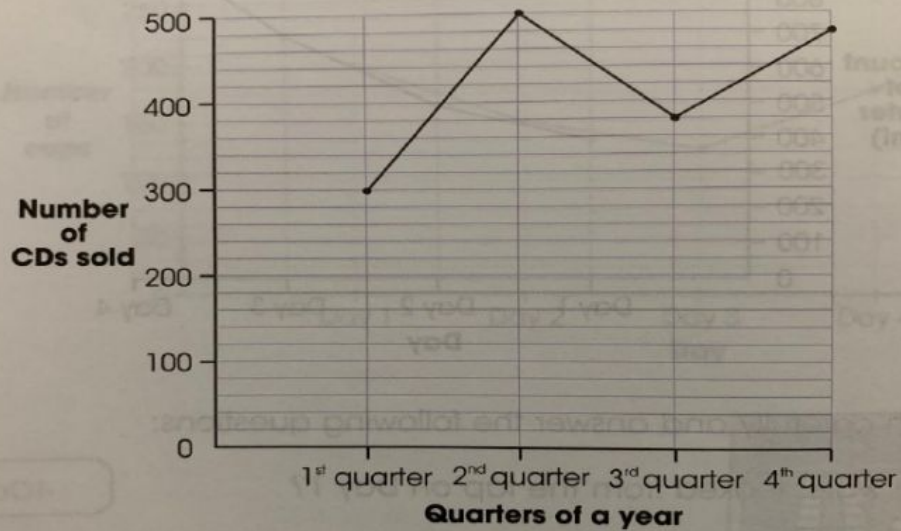


1. Fill in the missing records.

Week	Spent	Saved	Total
1	\$86		\$120
2		\$26	\$105
3	\$72	\$45	
4			\$140
Total	\$305		

2

The line graph below shows the sale of music CDs by a shop in a year.



Fill in the table below using information from the line graph.

Quarter of a year	Number of CDs sold
1st	
2 nd	
3 rd	
4th	