

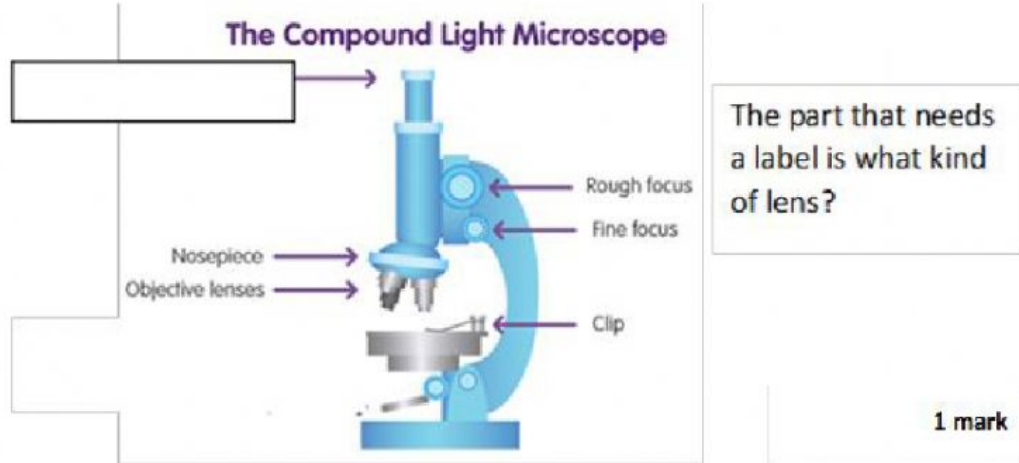
Year 7 END OF TOPIC TEST

NAME: _____

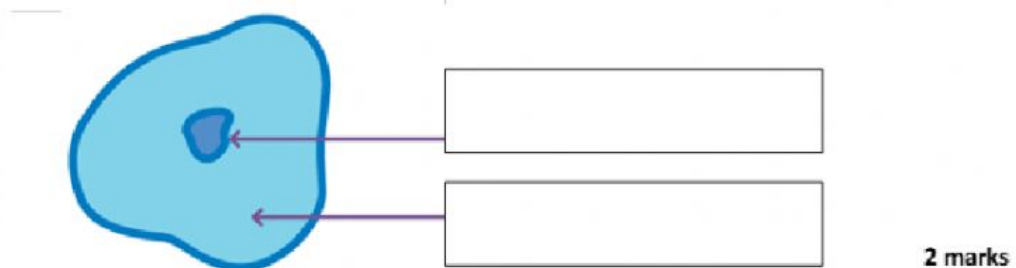
Cells and the Skeleton

INSTRUCTIONS: Answer the questions using the spaces provided.

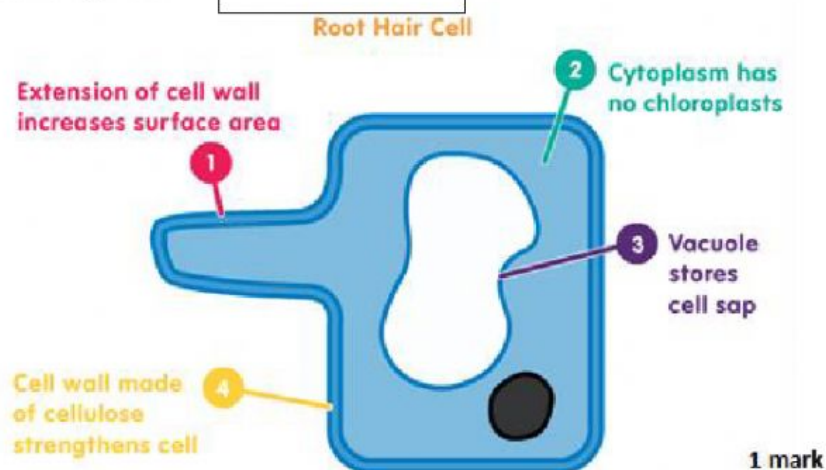
1.



2. Name both parts of this cell.

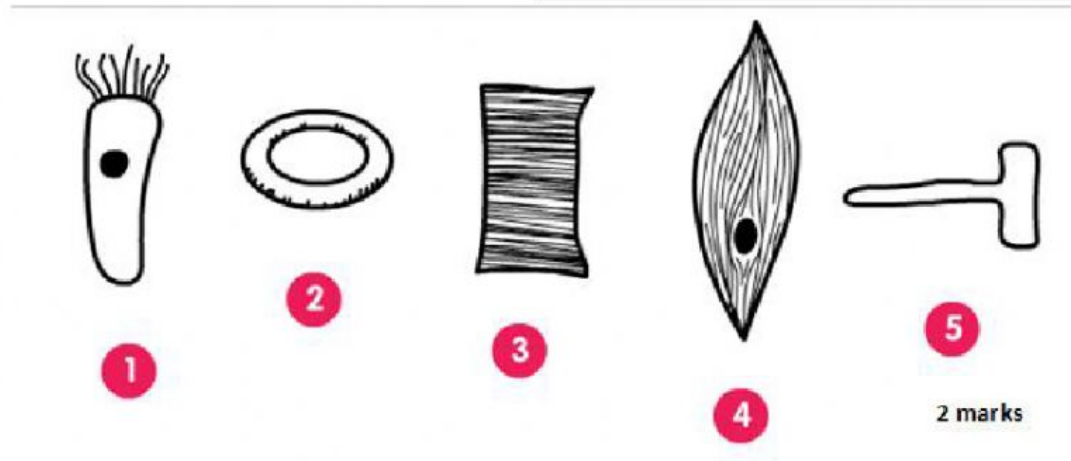


3. In the diagram of the root hair cell, which number shows an adaptation for absorbing water.

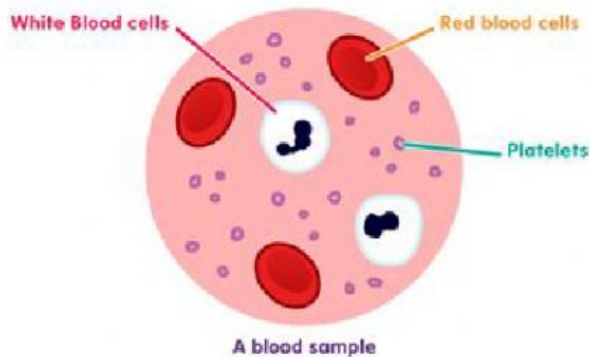


4. a) What is the name given to cell 2?

b) What is the name given to cell 5?



5. Look at the diagram of the blood sample. What do white blood cells have that red blood cells do not?



1 mark

6. What structure in the cell controls the passage of substances into and out of a cell?

1 mark

7. Which part of a plant cell absorbs light for photosynthesis? (Hint: Give the name of the part of the cell, not the substance.)

1 mark

8. Which part of a cell controls the cell's activities?

1 mark

9. In a cell, most of the chemical reactions take place in the . What word completes the sentence?

1 mark

10. Which part of a plant cell helps maintain its shape?

1 mark

11. What is the name of the process that occurs in a cell's mitochondria?

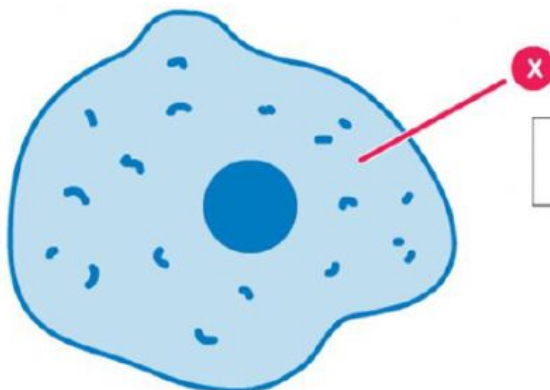
1 mark

12. The diagram shows the part of a cell which carries out respiration. What is it called?



1 mark

13. The diagram shows an animal cell. Identify the part labelled X.



1 mark

14. Name **ONE** feature present in both an animal cell and a plant cell.

1 mark

15. Name **ONE** of the structures found in plant cells but not found in bacterial cells.

1 mark

16. Name **ONE** of the cell structures that is found in both a bacterial cell and an animal cell.

1 mark

17. In a bacterial cell the genes are free in the cytoplasm. In what cell structure are the genes in plant and animal cells?

1 mark

18. Is the brain a cell, tissue or an organ?

1 mark

19. What name is given to a group of cells with similar structure and function?

1 mark

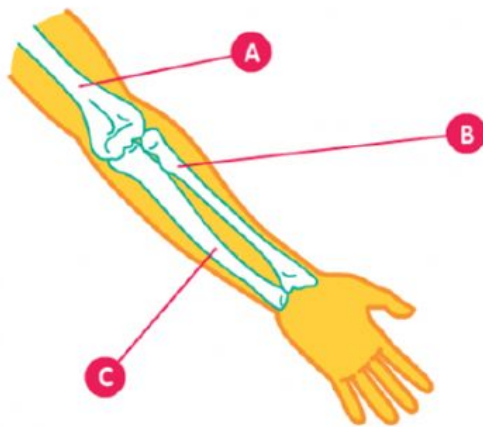
20. The skull is designed to protect which organ?

1 mark

21. Which set of bones protects the heart and lungs in the human skeleton?

1 mark

22. The diagram shows the bones of the arm. Name Bone A.



1 mark

23. What type of joint is the hip joint in the human skeleton?

1 mark

24. Which of the following is not a hinge joint in the human skeleton?

ELBOW KNEE SHOULDER

1 mark

25. Pairs of muscles working against each other are called
Choose the correct word to complete the sentence.

Antagonistic

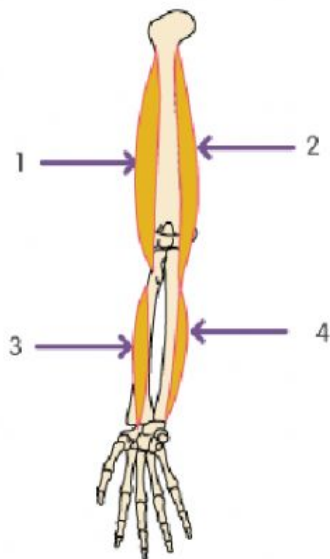
Protagonistic

1 mark

26. In which part of the body are the biceps and triceps found?

1 mark

27. Look at the diagram. Which number shows the muscle that contracts to bend the arm?



1 mark

28. What type of tissue contracts to bring about movement in an animal?

1 mark

29. Compare (state the similarities and differences in) the structures of plant and animal cells.

6 marks