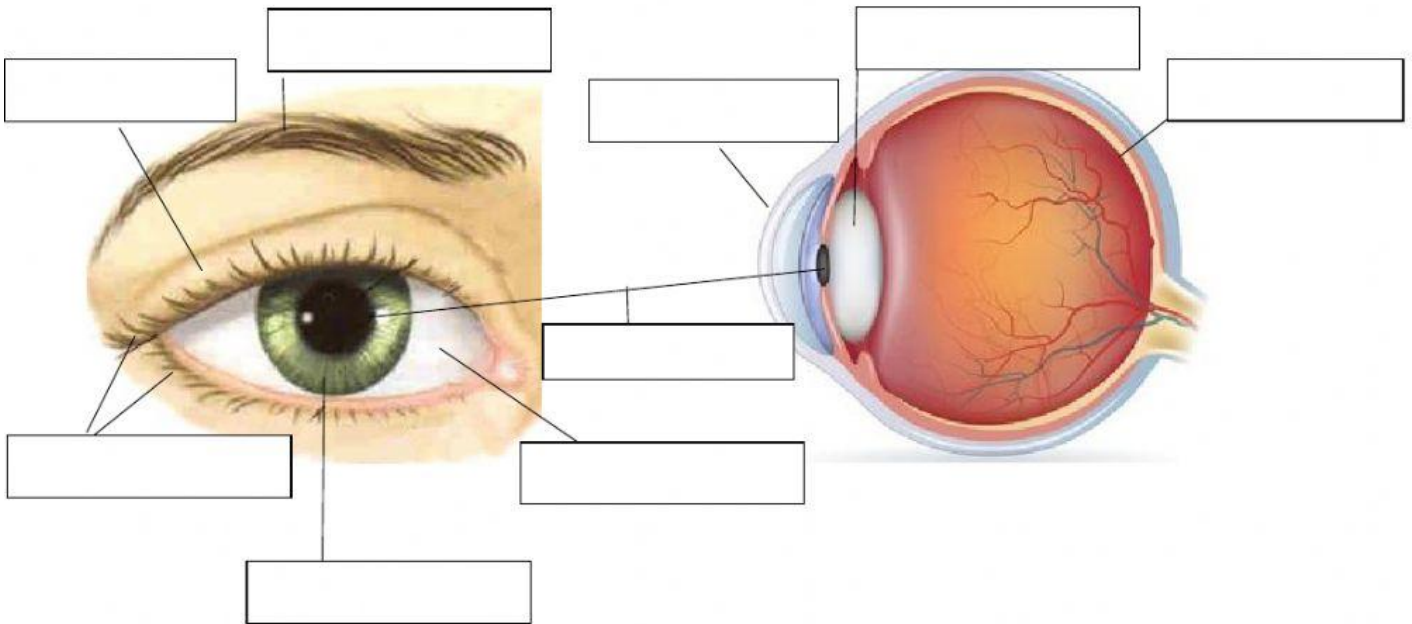


## The Sense of Sight

### A. Label the parts of the eye

iris    cornea    eyelashes    pupil    sclera    eyelid    lens    eyebrow    retina



### B. Write T (true) or F (false)

The sense organ of sight is the iris \_\_\_\_\_

The pupil changes its size depending on the amount of light. \_\_\_\_\_

The transparent outer cover of the eye is the cornea \_\_\_\_\_

The colored part of the eye is the retina \_\_\_\_\_

The lens helps to focus light on the retina \_\_\_\_\_

The eyelid, eyebrow and eyelashes protect the eye from dust and particles \_\_\_\_