

Listening to instructions

I can understand instructions.

Choose the word that does not match with the verb in bold.

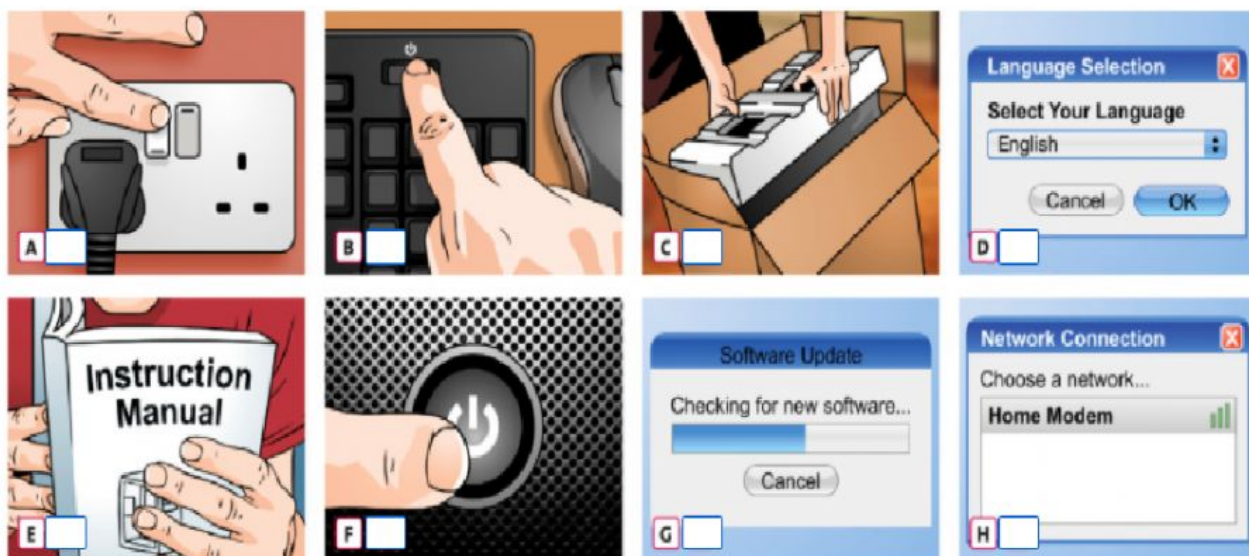
- | | | | |
|---------------------|---------------|--------------|----------------------|
| 1 scan | a photo | a drawing | a video |
| 2 upload | the internet | a photo | a video |
| 3 connect to | your password | the internet | a Wi-Fi network |
| 4 download | the Web | an app | some software |
| 5 enter | a password | a webcam | your contact details |
| 6 delete | a contact | a document | headphones |

- 2 **VOCABULARY** Complete the instructions for setting up a printer. Circle the correct verbs.

Setting up your new printer

- ▶ Take your new printer out of the box and ¹**remove** / **install** all packaging.
- ▶ ²**Turn on** / **Connect** the printer to the power source.
- ▶ ³**Install** / **Turn on** the printer. (The green light flashes.)
- ▶ ⁴**Download** / **Connect** the printer to your computer with the cable.
- ▶ ⁵**Upload** / **Install** the printer software, and ⁶**follow** / **delete** the on-screen instructions.
- ▶ ⁷**Remove** / **Restart** your computer.
- ▶ ⁸**Enter** / **Visit** the printer website and ⁹**download** / **scan** the operating instructions.

- 3  **3.20** Read the **Listening Strategy**. Then listen to the instructions. Number the pictures (A–H) in the correct order.



5 3.21 Listen to three conversations with a computer Help Desk. In each conversation, how many steps are there in the instructions: 3, 4 or 5?

6 3.21 Listen again and circle the correct words.

Conversation 1

- 1 The woman asks the man to check the power source / cable behind the computer.
- 2 At first the man forgets his password / office network.

Conversation 2

- 3 The woman finds the missing files in the recycle bin / on the desktop.
- 4 The man tells the woman to drag the documents / recycle bin into the folder.

Conversation 3

- 5 Ben can't use his memory stick / computer.
- 6 Sally works in room 240 / 204.