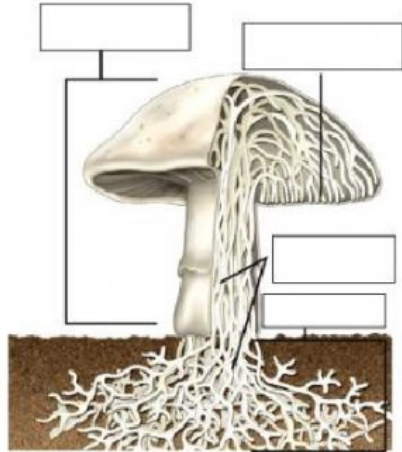


Name:

Test Fungi
Maximum 20 points

1. All fungi are prokaryotic. True x False 1p.
2. Label the picture below. 4p.



3. The cell wall of fungi are made out of: 1p.
a. Chitin
b. Cellulose
c. Rhizoids
d. Hyphae
4. The association between a fungus and an alga in a lichen is an example of 1p.
a. Predation
b. Commensalism
c. Mutualism
d. Decomposition
5. What is the main ecological role of fungi? 1p.
a. Producers
b. Decomposers
c. Parasites
d. Consumers
6. What is a hypha? 1p.

- a. A small, lightweight reproductive cell
- b. A single filament that is part of a fungus body
- c. A toxin produced by a poisonous mushroom
- d. A group of filaments that make up a fungus body

7. Fungi that do not have a sexual stage are called 1p.
8. What is a mycorrhiza? 3p.

9. What is an aflatoxin? 2p.

10. Choose one major group of fungi and write everything you know about it. 5p.