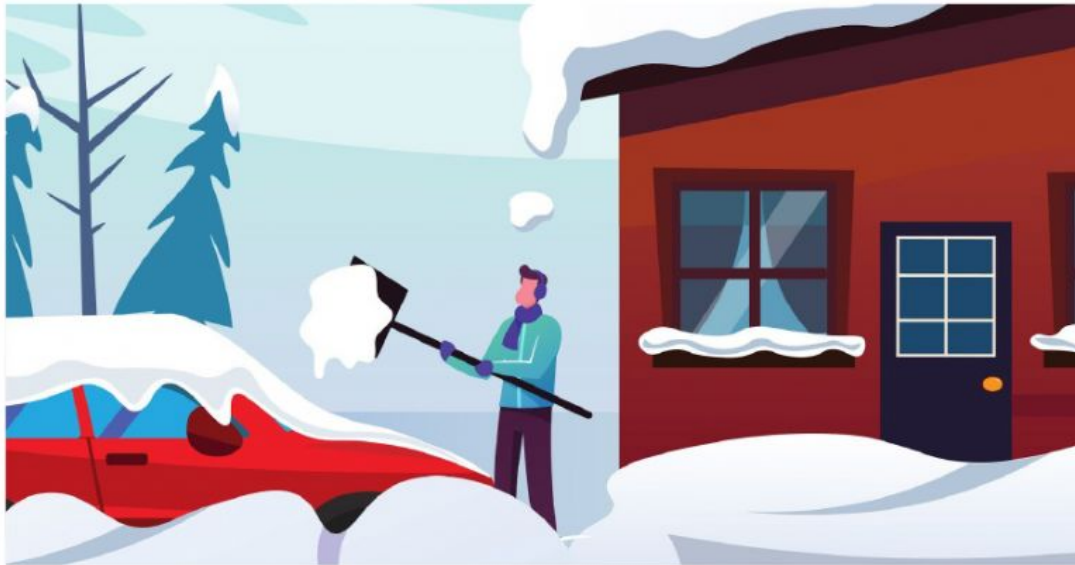


## Cold Cold Winter!

1.Late in the fall (autumn), the air gets colder. Nights get longer. Days  
2.get shorter. It gets dark earlier in the evening. Leaves fall from  
3.trees. Grass turns brown. When we look outside, we don't see



4.many green plants. Winter has come. December 21st is the first day  
of Winter. Winter is one of four seasons. 5.The seasons are winter,  
spring, summer, and fall. Winter means 6.cold weather in many  
places. It may snow. Winter is a time for warm 7.clothes like sweaters.  
We wear warm coats. We wear mittens and 8.scarves. We can make  
a snowman. We can walk in the snow. We 9.can ice skate or go  
sledding. We can cuddle up inside and read a 10.good book. Some  
animals sleep all winter. Many birds fly south. 11.Think about the birds  
that live here in winter. Maybe we could give 12.them bird seed to eat.  
They will thank us for it! After winter ends, 13.spring comes again.

1. What season comes before winter
2. What season comes after winter
3. What do animals do during winter
4. What should you wear in the snow
5. The first day of winter is