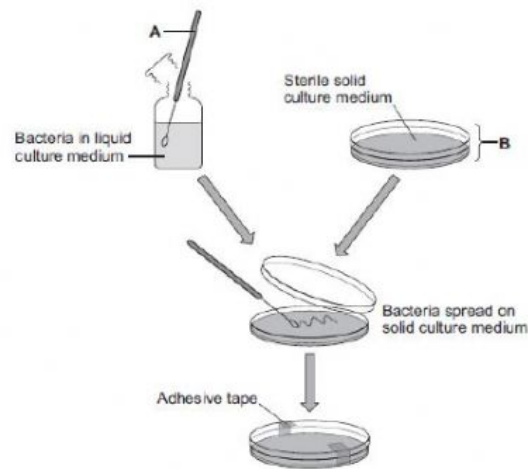


The diagram shows a method used to grow pure cultures of a bacterium.



- (a) Name apparatus **A** and apparatus **B**.

Apparatus **A** _____

Apparatus **B** _____

(2)

- (b) (i) Why should apparatus **A** and apparatus **B** be sterilised before they are used?

(1)

- (ii) How should apparatus **A** be sterilised?

Place an X in one box

Using enzymes ☐

Using a flame ☐

In an incubator ☐

(1)

- (iii) Adhesive tape is used to secure the lid on apparatus **B**.

Give **one** reason why the lid of apparatus **B** should be securely taped in place.

(1)