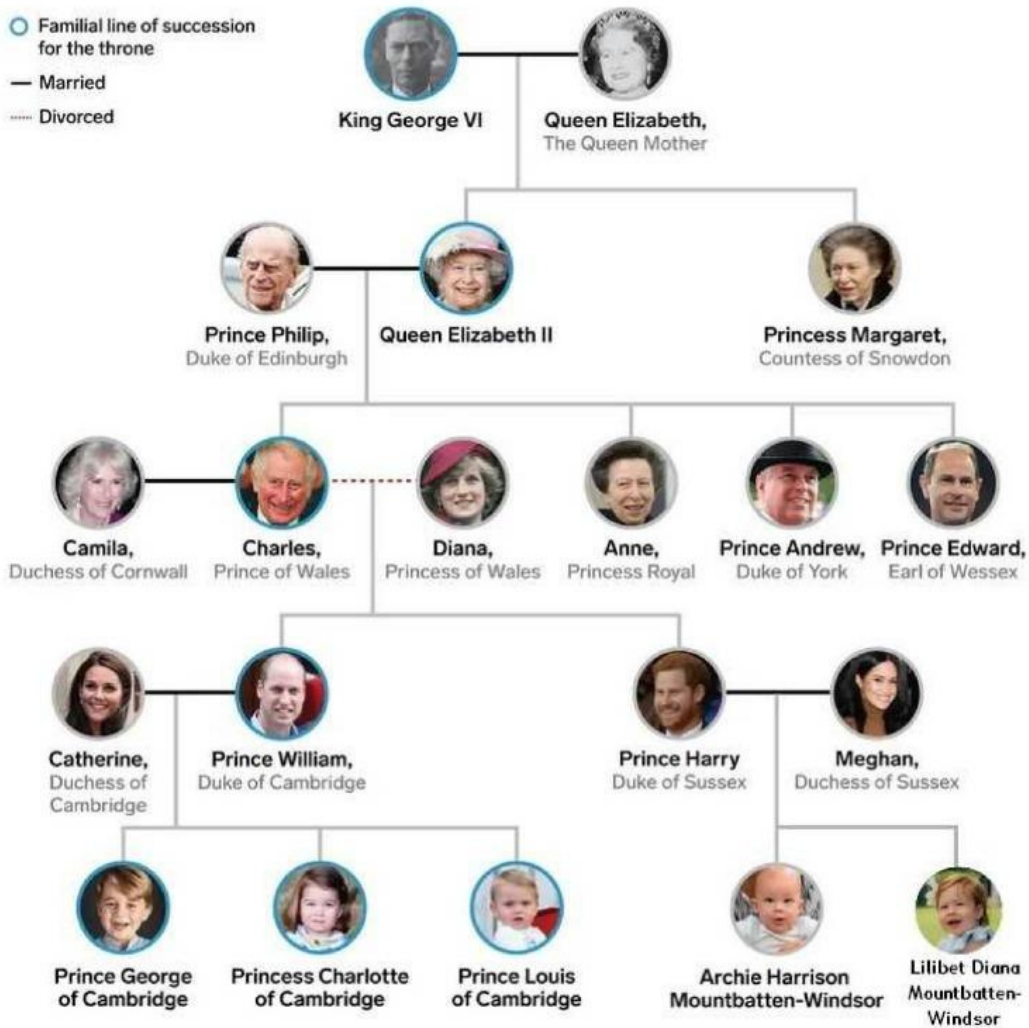


# The British Royal Family tree

- Familial line of succession for the throne
- Married
- Divorced



How are these people related ? Complete the sentences.

- 1 Queen Elizabeth II is Anne's \_\_\_\_\_
- 2 Prince Harry is Prince Andrew's \_\_\_\_\_
- 3 Charles is Princess Charlotte's \_\_\_\_\_
- 4 Anne is Princess Margaret's \_\_\_\_\_
- 5 Prince William is Prince Philip's \_\_\_\_\_
- 6 Diana is Prince William's \_\_\_\_\_
- 7 Catherine is Charles' \_\_\_\_\_
- 8 Margaret is Prince Edward's \_\_\_\_\_
- 9 Anne is King George VI's \_\_\_\_\_
- 10 Prince Andrew is Prince Harry's \_\_\_\_\_