



Week 5

Primary 3/4

The Write Tribe

STORY STRUCTURE: CONFLICT

PART 2

Conflict between 2 characters

CONFLICT BETWEEN CHARACTERS

IS A STRUGGLE BETWEEN TWO CHARACTERS. IT COULD BE A PHYSICAL OR VERBAL FIGHT.

CONFLICT BETWEEN CHARACTERS FLUCTUATES BETWEEN ACTION AND REACTION. IF THE ANTAGONIST PUNCHES THE PROTAGONIST, THERE WILL BE A REACTION. SIMPLY SAID, IT'S ALL ABOUT

ACTION / REACTION

Common compo topics you can use this kind of conflict will be:

- Bully
- Friendship
- Pickpocketing

Gerbil stomped towards me with a tightly formed fist.

What would your reaction be?

EMOTIONAL ADJECTIVE?

I felt petrified

1. FACIAL EXPRESSIONS

E.g Despite my best efforts to hide my fear, my face turned pale as a sheet.

2. Add a personal voice. What questions or regrets run through your mind?

E.g Oh no! What am I going to do now!

3. Antagonist takes **ACTION!**

E.g Before I could react, Gerbil's fist met face, hurling me at least two feet away.

4. Your **REACTION**

Pain throbbing through my body, I could sense the burning looks from my schoolmates. Without hesitation, I picked the nearest chair and launched it towards Gerbil!





BULLY

As Vernon approached me with clenched fists, I felt _____.

EMOTIONAL ADJECTIVE

FACIAL EXPRESSIONS

"Give me your wallet!" Vernon snarled, baring his teeth like an angry animal.

PERSONAL THOUGHTS

Vernon's face turning crimson red with anger,

ANTAGONIST'S ACTION

"Ouch!" I yelped, holding my throbbing jaw. Deep inside, anger boiled within me. Without hesitation,

PROTAGONIST'S ACTION

Soon, we were both rolling on the ground exchanging punches, breaking everything within reach.

THE SHOW DOWN

Conflict between 2 characters



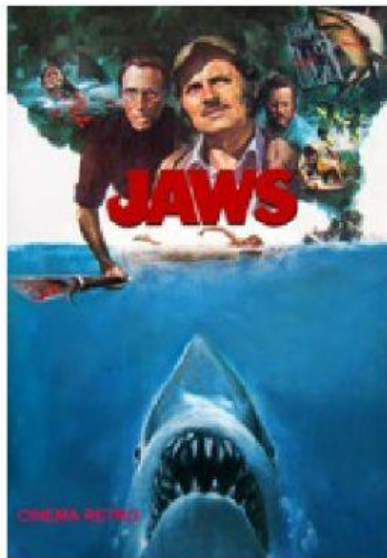
SCENARIO: YOUR BROTHER IS A MENACE AND HE WANTS THE TOY YOU GOT AS A BIRTHDAY PRESENT.

**EMOTIONAL ADJECTIVE / FACIAL EXPRESSIONS /
PERSONAL VOICE/ ANTAGONIST'S ACTION / PROTAGONIST
ACTION / THE SHOW DOWN**

Conflict with environment

As I crouched in the corner of the dark room, my mind whirled back to my kidnapper. He wasn't here in the room with me. But he will be back soon. *Soon.* That meant, I had a limited amount of time to make my escape. I looked left and right. It was pitch black. I could barely see a thing! I rummaged through the dark, hoping to find a source of light I could work with. Then, I tripped on something. My face hit the cold hard floor. The sound of my fall was enough to trigger my kidnapper. I could hear his foot steps coming closer and closer. I fumbled in the dark to realize that I had tripped over a broken chair. Hands outstretched, patting the floor with my bare hands, I found one of its legs. This will be my weapon!

Conflict with environment is a common theme used in movies and especially games!



A famous example of game that centers around this kind of conflict is, Granny or FNAF.



CONFLICT WITH ENVIRONMENT IS A STRUGGLE BETWEEN YOUR CHARACTER AND A LOCATION. THIS COULD BE A JAIL, SCHOOL OR ANY OTHER LOCATION. THINK OF JURASSIC PARK? THE CHARACTERS HAD TO FIGHT WITH DINOSAURS. WHAT ABOUT A HAUNTED HOUSE? THE LOCATION SHOULD BE A PLACE YOU REALLY DISLIKE BEING IN.

Common compo topics you can use this kind of conflict will be:

- Drowning
- Accident
- My day at the park



A DANGEROUS SITUATION

SCENARIO: YOU ARE TRAPPED IN A HAUNTED HOUSE. YOUR FRIENDS LEFT YOU INSIDE AS A PRANK. NOW, YOU HAVE TO FIND A WAY OUT BEFORE THE SUN SETS.

I tried to force open the door. The door was locked! It must be my friends. They must be playing a dumb prank! It's not funny! Not funny at all!

PERSONAL VOICE

I felt _____ petrified _____.

EMOTIONAL ADJECTIVE

Fear was ricocheting through my body, forcing my brain to freeze.

My face turned pasty white as sweat dotted my forehead.

FACIAL EXPRESSIONS

I could force my weight on the door. I stepped back to gain some momentum. With all my strength, I banged against the door.

THINK OF AN ACTION THAT COULD FREE YOU

Promptly, I fell flat on my face. No matter how many times I shook the door, It wouldn't

budge! The old wooden door stood there **as strong as iron**, almost as if it was **mocking**

SIMILE

PERSONIFICATION

me for even trying to break it open.

YOUR ENVIRONMENT IS YOUR ANTAGONIST. HOW WOULD IT STOP YOU?
ADD OBSTACLES



Conflict with environment



SCENARIO: DESPITE YOUR PARENTS' WARNINGS ABOUT THE DANGEROUS PATH IN THE FOREST, YOU AND YOUR FRIENDS DECIDE TO EXPLORE THE TERRAIN. UNFORTUNATELY, YOU GOT STUCK IN A QUICKSAND PIT.

**EMOTIONAL ADJECTIVE / FACIAL EXPRESSIONS /
PERSONAL VOICE/ YOUR ACTION / ENVIRONMENT'S ACTION
AGAINST YOU OR OBSTACLES**

EMOTIONAL ADJECTIVES CHEAT SHEET

MAD	SAD	GLAD	SCARED
furious	depressed	merry	terror - stricken
wrathful	feeling blue	exuberant	anxious
incensed	gloomy	elated	fearful
annoyed	bleak	overjoyed	terrified
see red	sorrowful	on cloud nine	petrified
peevish	down in the dumps	as happy as a lark	butterflies in my stomach
fed up	defeated	pleased	have cold feet
cross	unhappy	euphoric	heart in my mouth
irritated	upset	cheerful	chill down my spine