

Name:

Date

School/ Island

Grade:

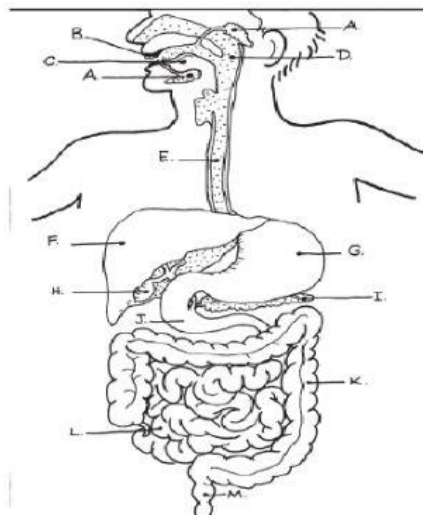
### Digestive System Quiz

#### **Section A: Multiple choice (10pts)**

1. Digestion Begins in the?
  - A. Stomach
  - B. Mouth
  - C. Liver
  - D. Small Intestine
2. The mechanical and chemical process of breaking foods into simpler, more soluble products is \_\_\_\_\_?
  - A. Egestion
  - B. Mastication
  - C. Digestion
  - D. Peristalsis
3. The 1<sup>st</sup> stage of digestion is \_\_\_\_\_.
  - A. Egestion
  - B. Mastication
  - C. Digestion
  - D. Peristalsis
4. True or false: True digestion ends in the small intestine.
  - A. True
  - B. False
5. True or False: Carbohydrates are only broken down in the stomach.
  - A. True
  - B. False
6. The \_\_\_\_\_ compacts and excretes solid waste and reabsorbs excess water.
  - A. Stomach
  - B. Mouth
  - C. Liver
  - D. Large Intestine
7. Churning is an example of chemical digestion. True or False?
  - A. True
  - B. False
8. All are examples of mechanical digestion EXCEPT \_\_\_\_\_.
  - A. Mastication
  - B. Chewing
  - C. Peristalsis
  - D. Protease creating absorbable amino acids
9. \_\_\_\_\_ are compounds that speed up chemical reactions.
  - A. Acids
  - B. Enzymes
  - C. Bases
  - D. Saliva
10. Lipase is the enzyme that digests \_\_\_\_\_.
  - A. Fats
  - B. Proteins
  - C. Sugars
  - D. Carbohydrates

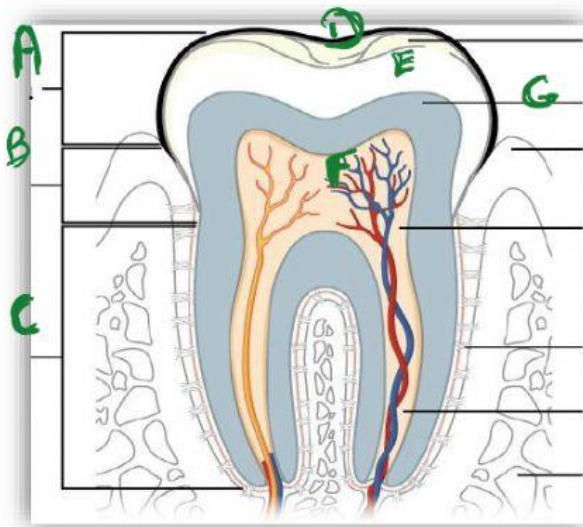
#### **Section B1: Label Letters A, E, F, G, H, I, J, K, L, M) [10pts]**

**Options:** Pharynx, Salivary Glands, Oesophagus, Gall Bladder, Liver, Rectum, Small Intestine, Stomach, Pancreas, Duodenum, Large Intestine



**Section B2: Label the tooth below (10pts)**

**OPTIONS:** Pulp cavity, enamel, crown, dentine, neck, gum, root.



1. What type of tooth is this? (1pt)
2. What is the function of this type of tooth? (2pts)

**Section C: Short Answer (20pts)**

1. Define:
  - a) peristalsis
  - b) mastication (2pts each)
2. State 3 functions of the liver besides bile production. (3pts)  

---

---

---
3. Explain the relationship of the gall bladder to the liver (2pts)  

---

---

4. What is cirrhosis and what is one main cause? (3pts)

5. A) How many teeth are there in the adult number of teeth? (1pt) \_\_\_\_\_

B) Which type of teeth are in adult teeth but NOT in baby or milk teeth? (1pt)

6. A) What are the 4 types of teeth (4pts)

B) What is the main function of each type of teeth (4pts)