

Name: \_\_\_\_\_

## TEST UNIT 3

### NATURAL SCIENCE

**1. Which sexual characteristics belong to men, which belong to women and which belong to both?**

Breast develop

Voice deepens

Skin and hair become oily

Pubic hair grows

Spots appear

Scrotum enlarges

Underarm hair grows

Menstruation begins

**2. Relate the female sexual reproductive organs to their functions.**

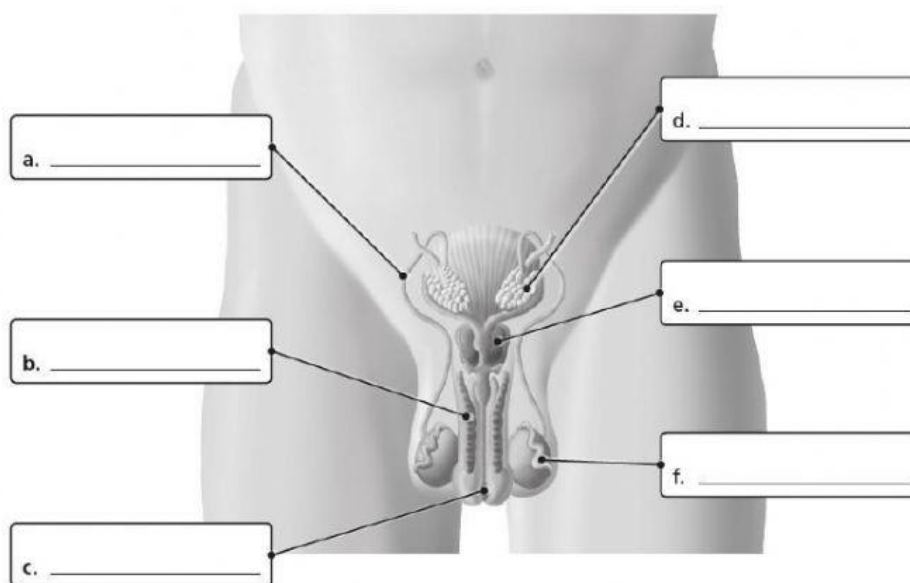
● 1. the organ where the foetus develops

● 2. connects the uterus and the vulva

● 3. produce ova

● 4. connect the uterus and the ovaries

**3. Label the diagram of the male reproductive organs.**



**4. Complete the text about pregnancy with the missing words. The first letter of each word has been given.**

A fertilised ovum is called a (1) z\_\_\_\_\_ and this is the first stage in pregnancy. It travels to the (2) u\_\_\_\_\_ where the cells continue to divide and multiply until they become an (3) e\_\_\_\_\_. It fixes itself to the lining of the (4) u\_\_\_\_\_. After 9 weeks the organs have started to develop and the (5) e\_\_\_\_\_ becomes a (6) f\_\_\_\_\_. It is protected by (7) a\_\_\_\_\_ fluid and receives nutrients and oxygen through the (8) p\_\_\_\_\_. Pregnancy lasts about 280 days.

**5. Circle True (T) or False (F).**

- a) Most girls experience puberty between 10 and 16 ..... TRUE / FALSE
- b) Primary sexual characteristics are the differences between male and female reproductive organs.....TRUE / FALSE
- c) Menopause occurs when women have their first period..... TRUE / FALSE
- d) Girl's hormones are called testosterone..... TRUE / FALSE
- e) Human beings pass on some characteristics through genes .....TRUE / FALSE

**6. Select the correct word for these definitions.**

- a. This is a muscular tube which connects the uterus to the outside of the body.
- b. This is a tube in the penis which sperm travel through.
- c. These are the male reproductive cells.
- d. This is when an ovum and a sperm join to make a new cell.
- e. The embryo floats inside this.

**7. Answer the following questions.**

What is the name of the cell that forms the union between sperm and ova?

\_\_\_\_\_

Where does the embryo fix itself into? \_\_\_\_\_

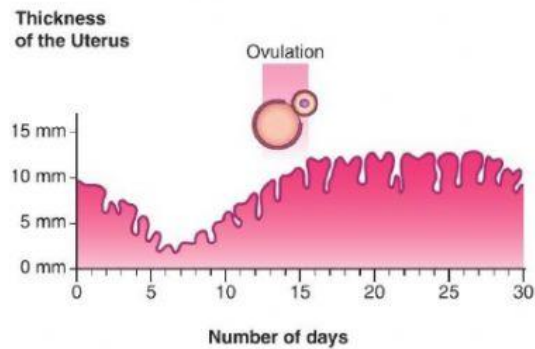
How do we call the embryo after about nine weeks? \_\_\_\_\_

What is the baby connected to the placenta by? \_\_\_\_\_

How many weeks does normally last pregnancy? \_\_\_\_\_

What is the name of the male reproductive cell? \_\_\_\_\_

**8. Complete the sentences about menstruation.**



- a) The ovaries release hormones called \_\_\_\_\_.
- b) Menstruation normally happens every \_\_\_\_\_ days.
- c) During menstruation blood and tissue is released through the \_\_\_\_\_.
- d) Women reach the menopause approximately when they are \_\_\_\_\_.

**9. Put the stages of development into the correct order.**

- a baby ☐      b embryo ☐      c foetus ☐      d zygote ☐

**10. Put the stages of the menstrual cycle in the correct order.**

- a Blood and the lining of the uterus are also released from the body. ☐
- b The walls of the uterus get thicker with extra blood and tissue. ☐
- c An ovum is released into one of the fallopian tubes. ☐
- d The unfertilised ovum leaves the body through the vagina. ☐