

**EXAMEN DE SCIENCE**
PRIMER QUIMESTRE
2019 - 2020

ESTUDIANTE	CURSO	PARALELO	FECHA	DOCENTE
	1st BGU		2020/.../...	MSc. Boris Guerra R.

"Dime y lo olvido, enséñame y lo recuerdo, involúcrame y lo aprendo" Benjamín Franklin.

Indicadores de logro:

1. To explain the components of the scientific theory of cells.
2. To describe the chemical makeup of living things.
3. To compare the structure and function of cell parts in plant and animal cells.

RECOMENDACIONES:

- Este examen será tomado de manera digital por medio de la plataforma de language "liveworksheets.com" en el laboratorio de computación de la institución.
- Lea y comprenda la pregunta antes de responder. Utilice esferográfico de color azul, excepto en la Básica Elemental.
- Para considerar las respuestas válidas estas deben estar sin ningún tipo de corrección.
- El examen está programado para 60 minutos sobre 47 puntos. La calificación final será sobre 10 puntos.

I. READ THE QUESTION AND CHOOSE THE CORRECT ANSWER.**CELL STRUCTURE****1. Which structures are found in all types of living cells?**

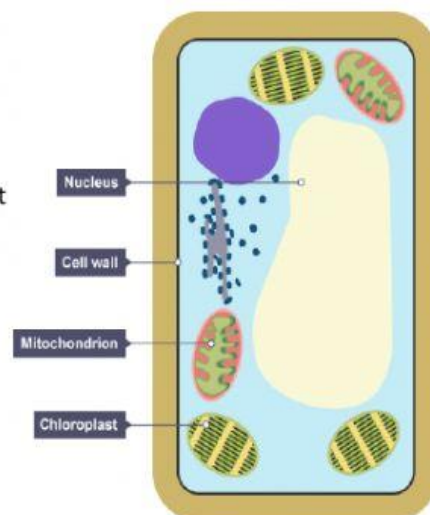
- a. Cell membranes and cell walls
- b. Cell walls and ribosomes
- c. Ribosomes and cell membranes

2. Which organelles are only found in plant cells?

- a. Chloroplasts
- b. Mitochondria
- c. Nuclei

3. What is wrong with this diagram of a plant cell?

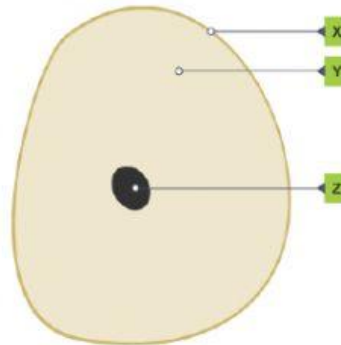
- a. A plant cell with labels for nucleus, mitochondrion, cell wall and chloroplast
- b. Plant cells do not contain mitochondria
- c. The nucleus and the chloroplast have been labelled the wrong way round
- d. The cell wall and the nucleus have been incorrectly labelled



4. What is shown by the labelling line X?

a. Shows a circular shaped cell, with X pointing to the line around the outside, Y pointing to the inside of the cell, and Z pointing to a small circle in the middle of the cell

- b. Cell wall
- c. Cell membrane
- d. Cytoplasm



5. What is shown by the labelling line Y?

a. Shows a circular shaped cell, with X pointing to the line around the outside, Y pointing to the inside of the cell, and Z pointing to a small circle in the middle of the cell

- b. Cytoplasm
- c. Nucleus
- d. Vacuole

6. What is the job of the nucleus?

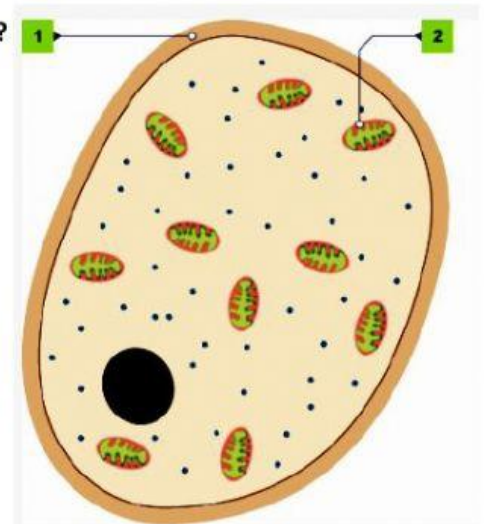
- a. To control what substances go into and out of the cell
- b. To give a plant cell its shape
- c. To control what happens inside the cell

7. What is produced by ribosomes?

- a. Carbon dioxide
- b. Protein
- c. Sugar

8. The next diagram shows a cell. Which of the following is correct?

- a. A cell with nucleus, ribosomes, cell wall and mitochondrion.
- b. The cell is a bacterial cell, structure 1 is the cell wall and structure 2 is a mitochondrion
- c. The cell is a fungal cell, structure 1 is the cell wall and structure 2 is a mitochondrion
- d. The cell is a plant cell, structure 1 is the cell wall and structure 2 is a chloroplast



9. The cell theory is based on three major premises:

1. Cells are the basic units of life.
2. Each cell must come from a preexisting cell.
3. All living things are made up of cells.
4. All of them

10. Which of the following discoveries was the last to be made?

- a. All living things are made up of cells.
- b. Cells are the basic units of life.
- c. Each cell must come from a preexisting cell.

11. Which of the following statements describes how the prokaryotic cells appear compared to the eukaryotic cells?

- a. The prokaryotic cells have cell membranes, while the eukaryotic cells do not.
- b. The prokaryotic cells are much smaller than the eukaryotic cells.
- c. The prokaryotic cells have a nucleus, while the eukaryotic cells do not.
- d. The prokaryotic cells have cytoplasm, and eukaryotic cells do not.

12. Which of the following choices correctly describes the composition of the cell membrane?

- a. Contains only proteins
- b. Contains lipids and proteins
- c. Contains only lipids
- d. Contains lipids and cytosol

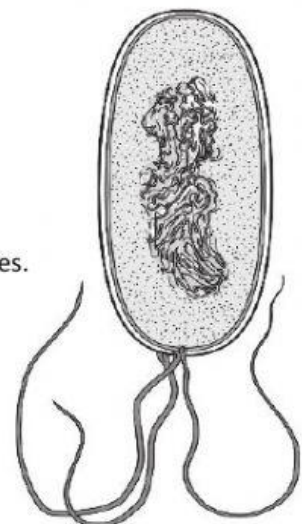
13. Which of the following best describes the organism seen there?

The organism is eukaryotic, because it has a cell membrane.

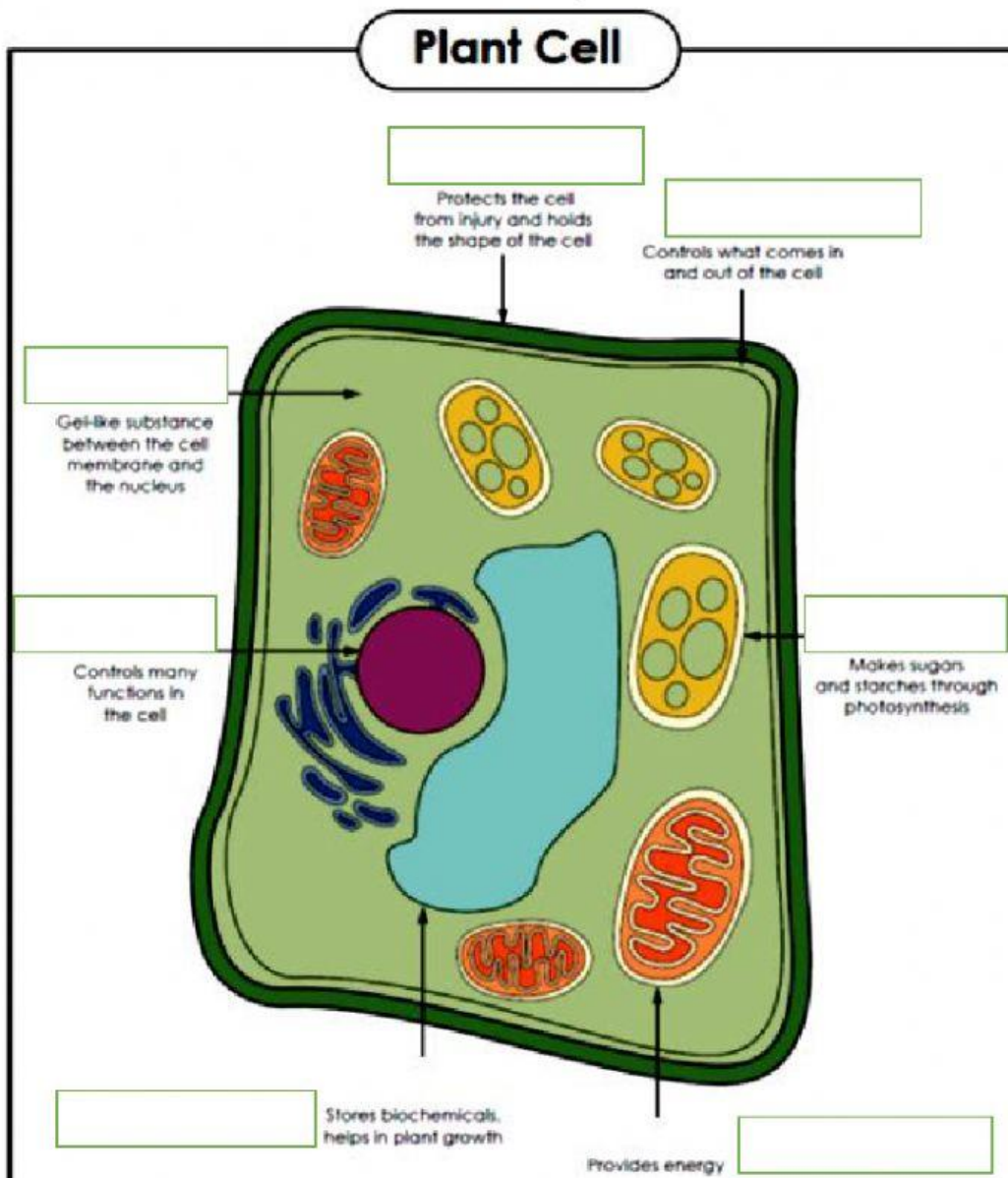
The organism is prokaryotic, because it has ribosomes.

The organism is eukaryotic, because it has a multiple flagella.

The organism is prokaryotic, because it does not contain membrane-bound organelles.



14. LABEL THE FOLLOWING PICTURES, CHOOSE THE CORRECT LABEL.



Cell Wall

Cytoplasm

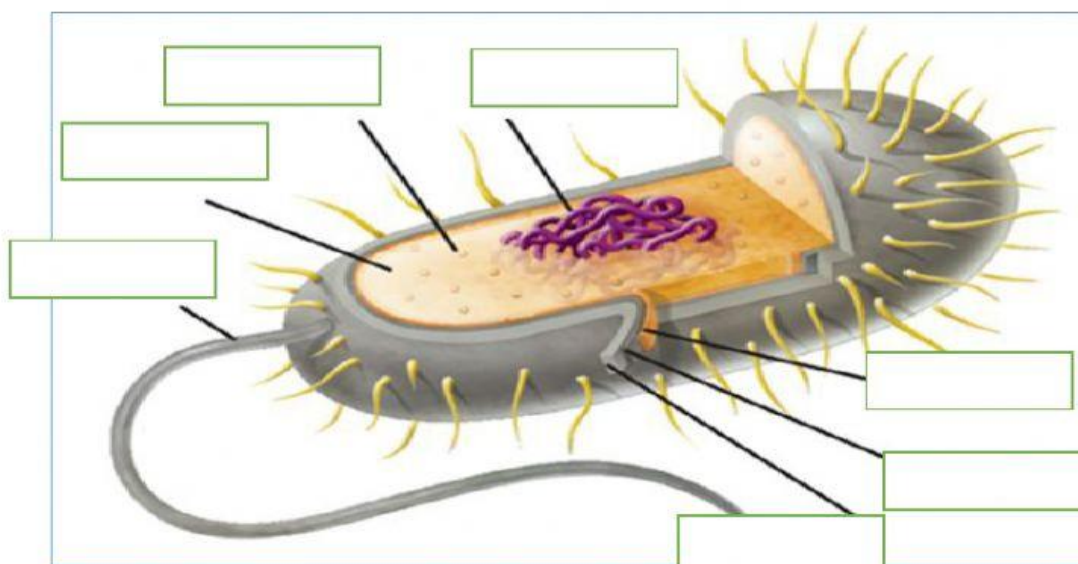
Chloroplast

Cell Membrane

Nucleus

Mitochondrion

Vacuole



Ribosome

Flagellum

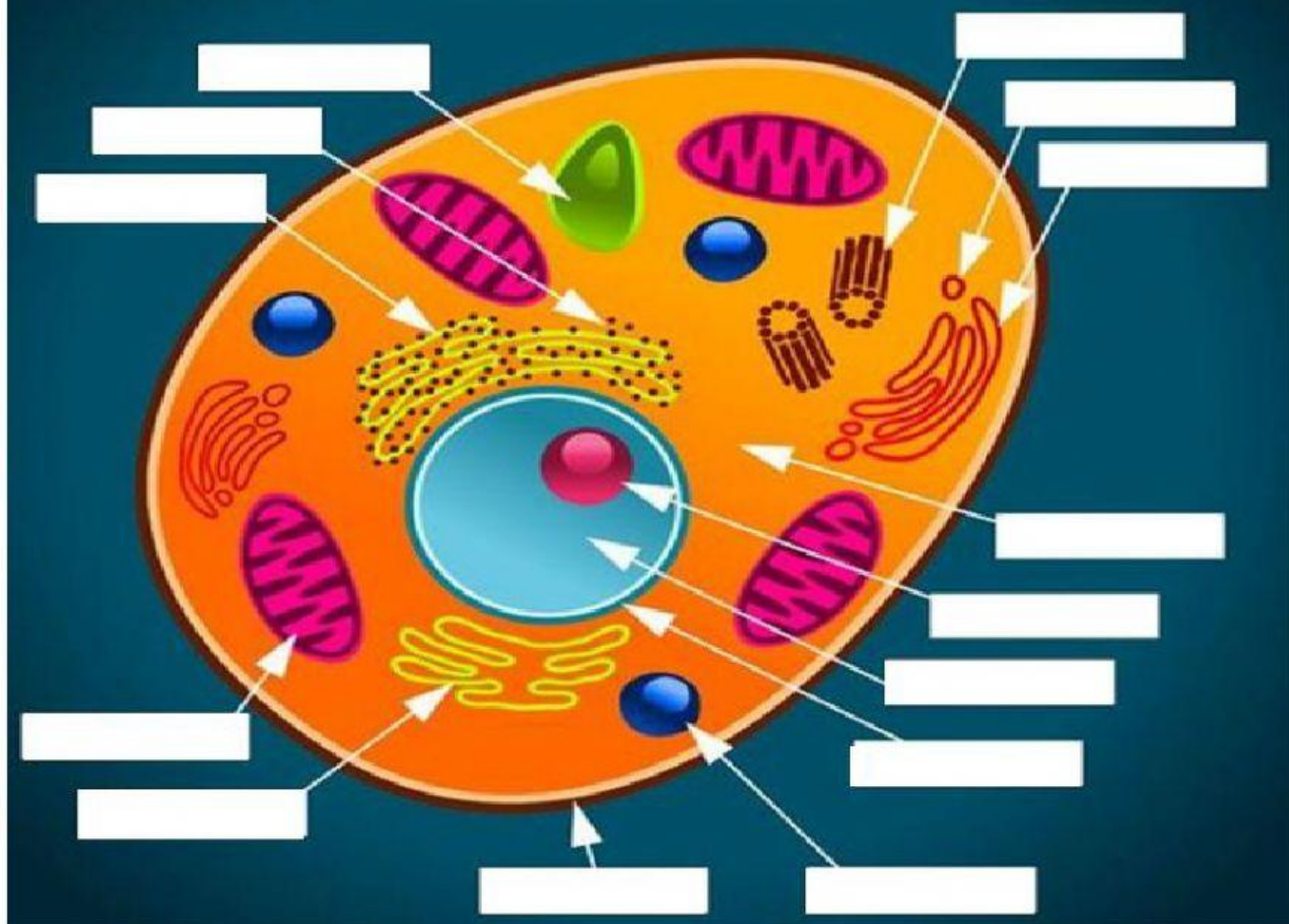
Capsule

Cell membrane

Cytoplasm

Cell wall

Animal Cell



Vacuole

Rough endoplasmic reticulum

Smooth endoplasmic reticulum

Lysosome

Nucleus

Ribosomes

Mitochondrion

Cell membrane

Nuclear membrane

Golgi vesicle

Nucleolus

Cytoplasm

Golgi apparatus

Centrioles

FIRMAS DE RESPONSABILIDAD:

ELABORADO POR: MSc. Boris Guerra R.	REVISADO POR: Lic. Vinicio Sánchez	APROBADO POR: Mgs. Hna. Martha Gallo
DOCENTE	COORDINADOR DE ÁREA	VICERRECTORA
Fecha: 2020-01-02	Fecha: 2020-01-02	Fecha: 2020-01-02