

CLEVELAND ENEAS PRIMARY
CHRISTMAS TERM EXAMINATION
GENERAL SCIENCE

TEACHER: _____

STUDENT: _____

PART A: MULTIPLE CHOICE

INSTRUCTIONS: For each question, there are four possible answers **A, B, C, and D. CLICK** on the letter next to the answer you have selected.

1. Which is the building blocks of structure and function all living things?
A. Cells **B.** organs **C.** systems **D.** tissues
2. Which of the following is **NOT** a characteristic of fungi?
A. It makes its own food **B.** It is a decomposer
C. It lives near moist areas **D.** Most are single celled
3. What is the shape of most adult echinoderms?
A. flat **B.** round **C.** radial symmetry **D.** bilateral symmetry
4. Where do echinoderms live?
A. on land **B.** in the ocean **C.** in the air **D.** in your home
5. Which worm can regrow its body parts?
A. tapeworm **B.** hookworm **C.** planarian **D.** earthworm
6. Oxygen-rich blood comes on which side of the heart?
A. right **B.** top **C.** bottom **D.** left
7. Which blood vessel takes blood to the heart?
A. arteries **B.** veins **C.** capillaries **D.** ventricles
8. What strengthens the heart?
A. exercise **B.** sleeping **C.** talking **D.** eating

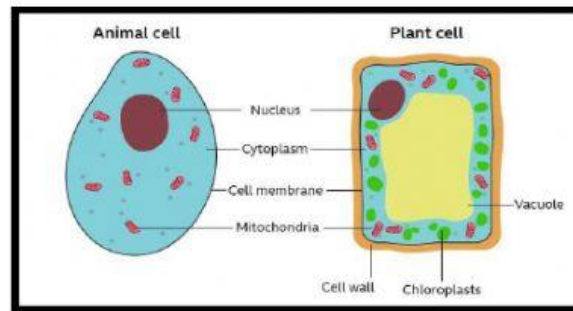
PART B: Water enters the sponge through pores. Using the numbers 1-4 show the correct order of how sponges feed? [4]

- _____ Thread-like structures remove tiny pieces of food.
- _____ Water enters through pores.
- _____ The water flows out through openings called vents.
- _____ Whip – like structures beat rapidly helping purified water enter the canals.



PART C: SHORT ANSWERS

1. The diagram shows parts of an animal cell and a plant cell.



a. Other than the vacuole, name **TWO** structures that are found in both plant and animal cells.

I. _____ [1]

II. _____ [1]

2. The photo shows different types of fungi



b. List the **THREE** types of fungi used to make this pizza.

_____ [3]

c. State **TWO** ways in which fungi are **harmful** to humans.

i. _____

ii. _____ [2]

d. Penicillin is made from _____ [1]

TOTAL: 20 POINTS